

VOR/DME MCC	APP CRS	Rwy Idg	10599
109.2	333°	TDZE	72
Chan 29		Apt Elev	77

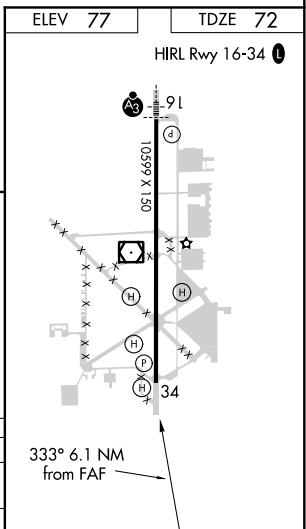
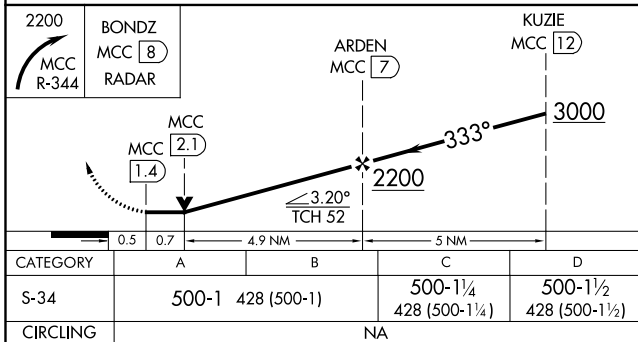
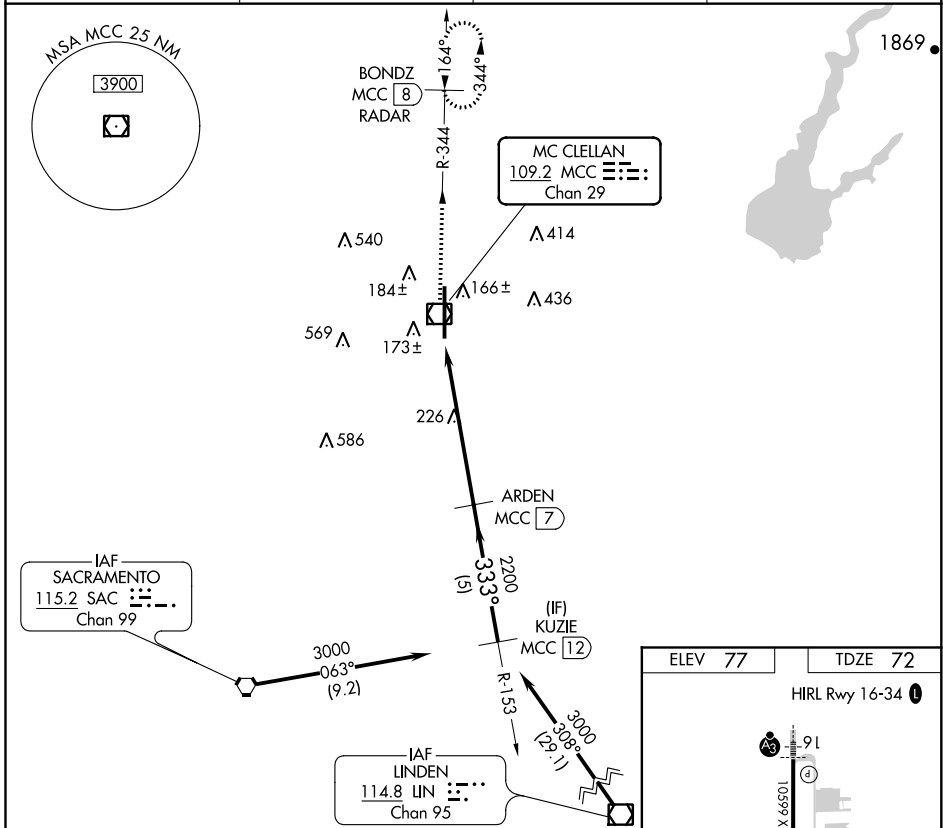
VOR/DME RWY 34

MC CLELLAN AIRFIELD (MCC)

NA VDP NA when using Sacramento Intl altimeter setting. When local altimeter setting not received, use Sacramento Intl altimeter setting and increase all MDAs 40 feet.

MISSED APPROACH: Climbing right turn to 2200 via MCC R-344 to BONDZ/MCC 8 DME/RADAR and hold.

AWOS-3 125.975	NORCAL APP CON 127.4 317.5	CLNC DEL 119.825	UNICOM 122.975 (CTAF) 0
--------------------------	--------------------------------------	----------------------------	-----------------------------------



SW-2, 09 SEP 2021 to 07 OCT 2021

SW-2, 09 SEP 2021 to 07 OCT 2021