

(CWARD2.CWARD) 18004

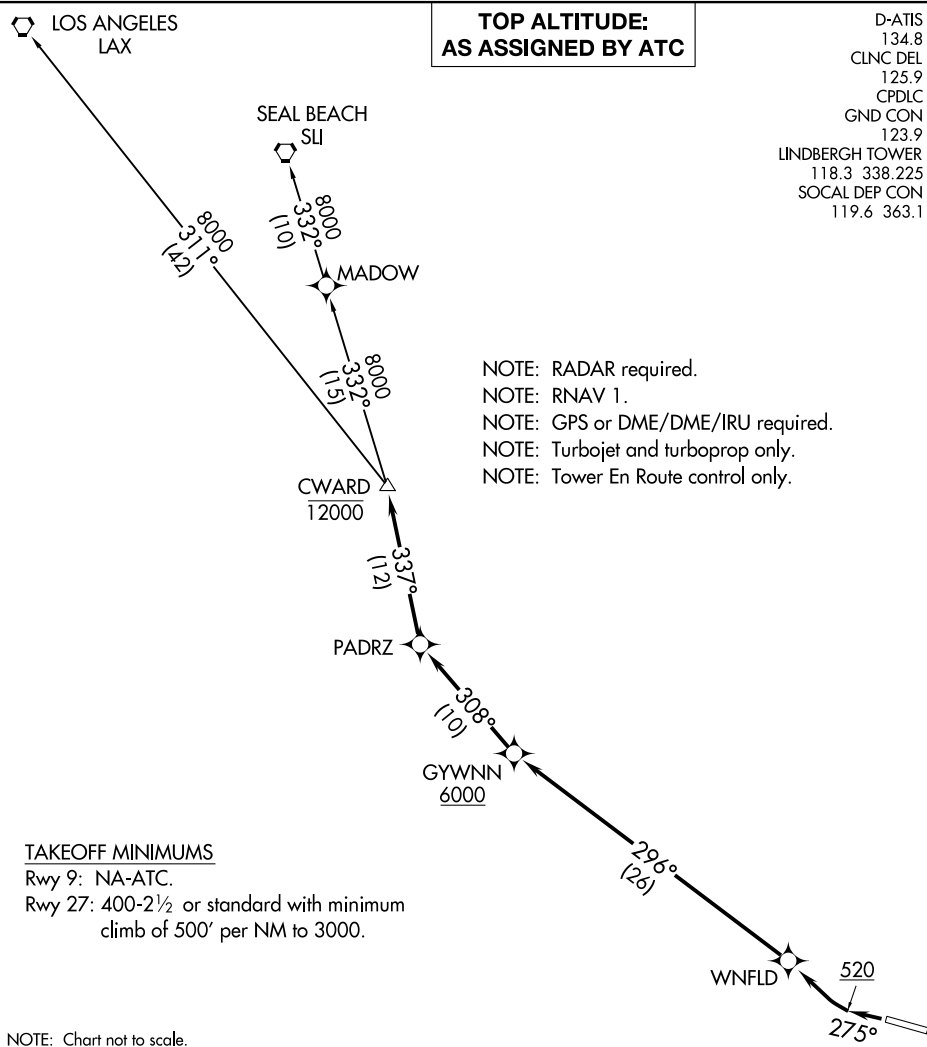
# CWARD TWO DEPARTURE (RNAV)

AL-373 (FAA)

SAN DIEGO INTL (SAN)  
SAN DIEGO, CALIFORNIA

**TOP ALTITUDE:  
AS ASSIGNED BY ATC**

D-ATIS 134.8  
 CLNC DEL 125.9  
 CPDLC  
 GND CON 123.9  
 LINDBERGH TOWER 118.3 338.225  
 SOCAL DEP CON 119.6 363.1



NOTE: RADAR required.  
 NOTE: RNAV 1.  
 NOTE: GPS or DME/DME/IRU required.  
 NOTE: Turbojet and turboprop only.  
 NOTE: Tower En Route control only.

### TAKEOFF MINIMUMS

Rwy 9: NA-ATC.  
 Rwy 27: 400-2½ or standard with minimum climb of 500' per NM to 3000.

NOTE: Chart not to scale.

### DEPARTURE ROUTE DESCRIPTION

TAKEOFF RUNWAY 27: Climb heading 275° to 520, then right turn direct WNFLD, then on track 296° to cross GYWNN at or above 6000, then on track 308° to PADRZ, then on track 337° to cross CWARD at or below 12000, thence. . . .  
 . . . on transition. Maintain ATC assigned altitude. Expect filed altitude 10 minutes after departure.

LOS ANGELES TRANSITION (CWARD2.LAX)  
SEAL BEACH TRANSITION (CWARD2.SLI)

# CWARD TWO DEPARTURE (RNAV)

(CWARD2.CWARD) 07DEC17

SAN DIEGO, CALIFORNIA  
SAN DIEGO INTL (SAN)

SW-3, 09 SEP 2021 to 07 OCT 2021

SW-3, 09 SEP 2021 to 07 OCT 2021