


LOC/DME I-SAN	APP CRS	Rwy Idg	7280
111.55	095°	TDZE	17
Chan 52 (Y)		Apt Elev	17

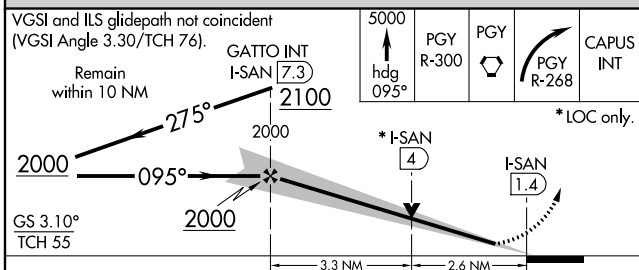
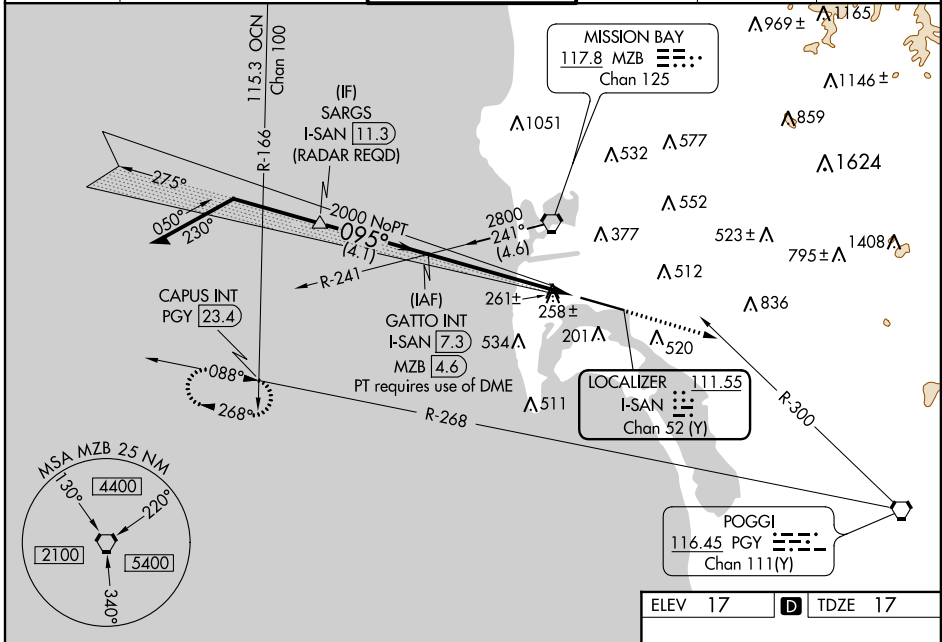
ILS Y or LOC Y RWY 9

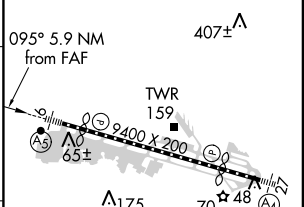
SAN DIEGO INTL (SAN)

⚠ Circling NA north of Rwy 9-27. Autopilot coupled approach NA below 530. When Circling to Rwy 27 at night, operational VGSI required, remain on or above VGSI glidepath until threshold. For inop ALS, increase S-ILS 9 all Cats visibility to 2 1/2 SM. Rwy 9 helicopter visibility reduction below RVR 4000 NA. # Inop table does not apply to S-ILS 9.

MALSRL

 MISSED APPROACH: Climb to 5000 on heading 095° and on PGY VORTAC R-300 to PGY VORTAC, then right turn on PGY VORTAC R-268 to CAPUS INT/23.4 DME and hold. # Missed approach requires minimum climb of 270 feet per NM to 4000.

D-ATIS	SOICAL APP CON	LINDBERGH TOWER	GND CON	CLNC DEL	CPDLC
134.8	119.6 363.1 (WEST) 124.35 279.625 (EAST)	118.3 338.225	123.9	125.9	



ELEV 17	TDZE 17
	
TDZ/CL Rwy 9 and 27 HIRL Rwy 9-27 FAF to MAP 5.9 NM	
Knots	60 90 120 150 180
Min:Sec	5:54 3:56 2:57 2:22 1:58

CATEGORY	A	B	C	D
S-ILS 9#		258/40	241 (300-3/4)	
S-ILS 9		751-2	734 (800-2)	
S-LOC 9	960/40	943 (1000-3/4)	960-2	943 (1000-2)
C CIRCLING	960-1 1/4	943 (1000-1 1/4)	960-2 3/4 943 (1000-2 3/4)	960-3 943 (1000-3)

SW-3, 09 SEP 2021 to 07 OCT 2021

SW-3, 09 SEP 2021 to 07 OCT 2021