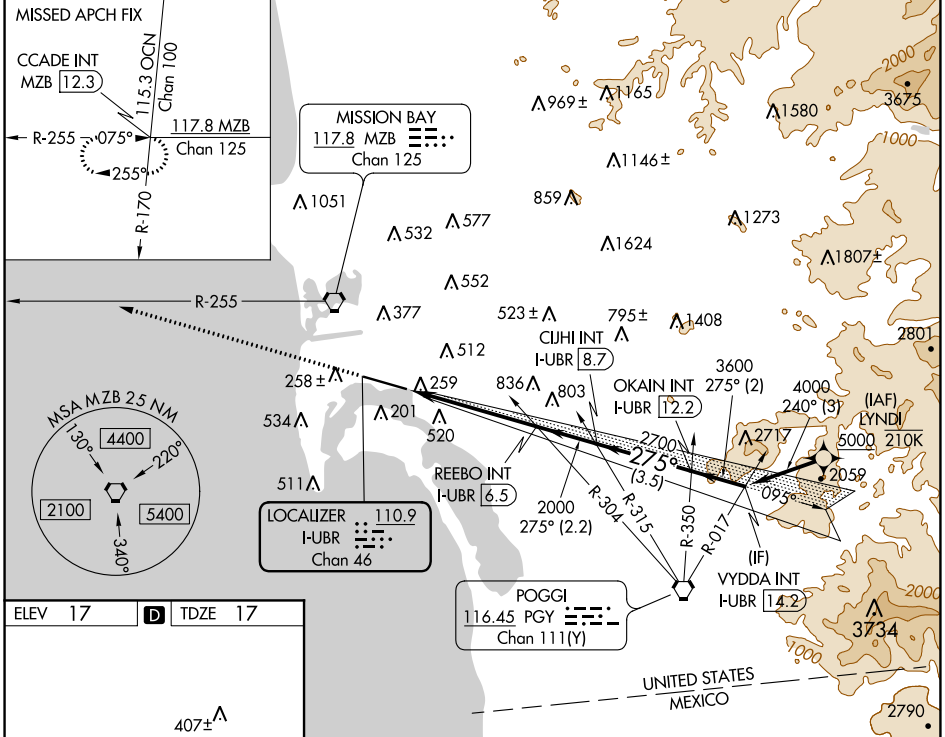


LOC/DME I-UBR 110.9 Chan 46	APP CRS 275°	Rwy ldg TDZE Apt Elev 7590 17 17
---	------------------------	--

LOC RWY 27

SAN DIEGO INTL (SAN)

From LYNDI: RNAV 1-DME/DME/IRU or GPS required.		MAIS ④	MISSED APPROACH: Climb to 2500 on heading 275° and on MZB VORTAC R-255 to CCADE INT/ MZB 12.3 DME and hold.
RNAV 1-DME/DME/IRU or GPS required for procedure entry.			
<p>▼ Rwy 27 helicopter visibility reduction below 1 SM NA. Circling NA north of Rwy 9-27. Inop table does not apply to Cats A and B. For inop ALS, increase S-27 Cats C and D visibility to 1 1/8 SM.</p>			
D-ATIS 134.8	SOCAL APP CON 119.6 363.1 (WEST) 124.35 279.625 (EAST)	LINDBERGH TOWER 118.3 338.225	GND CON 123.9
		CLNC DEL 125.9	CPDLC



ELEV 17	D	TDZE 17			
<p>407± A</p> <p>TWR 159</p> <p>275° 5.2 NM from FAF</p> <p>9400 X 200</p> <p>70 48</p> <p>A175</p> <p>A176</p>					
<p>TDZ/CL Rwy 9 and 27</p> <p>HIRL Rwy 9-27</p> <p>FAF to MAP 5.2 NM</p>					
Knots	60	90	120	150	180
Min:Sec	5:12	3:28	2:36	2:05	1:44

2500	MZB R-255	CCADE INT	REEBE INT I-UBR (6.5)	CUHI INT I-UBR (8.7)	OKAIN INT I-UBR (12.2)	275°	4000
hdg 275°							
	I-UBR (1.3)	≤ 3.50° TCH 65	2000	2700	3600		
	5.2 NM		2.2 NM	3.5 NM	2 NM		
CATEGORY	A		B		C		D
S-27	680-1		663 (700-1)		680-1 3/4		663 (700-1 1/4)
C CIRCLING	820-1		803 (900-1)		840-2 1/2		940-3
					823 (900-2 1/2)		923 (1000-3)

SW-3, 09 SEP 2021 to 07 OCT 2021

SW-3, 09 SEP 2021 to 07 OCT 2021