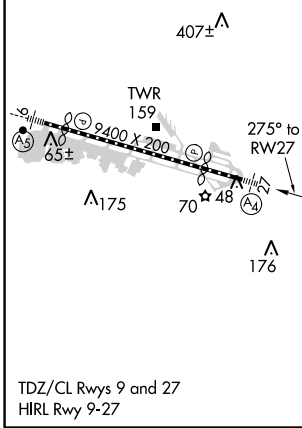
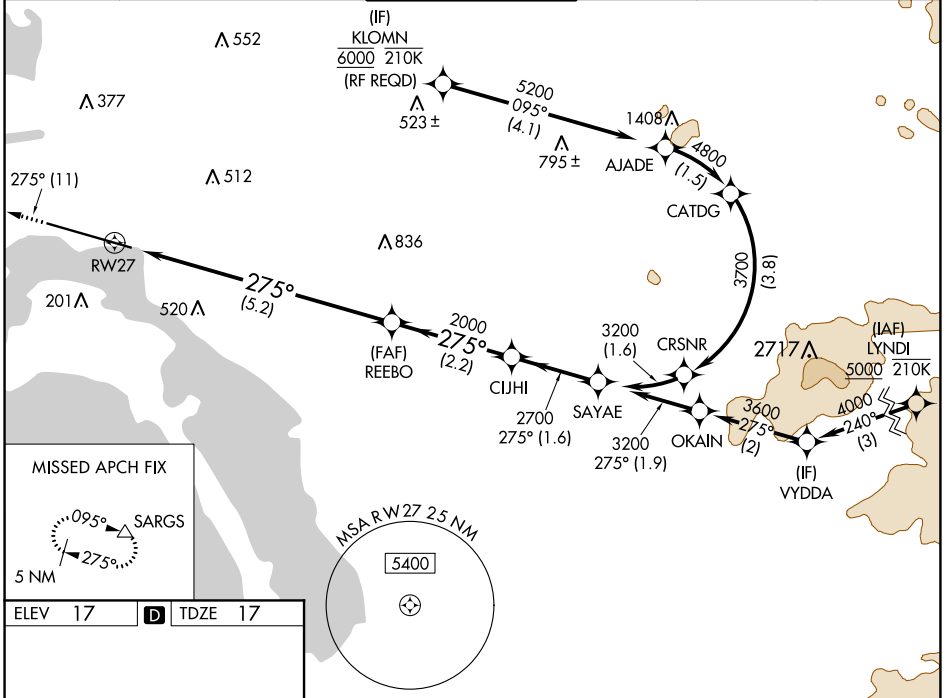


APP CRS <b>275°</b>	Rwy Idg TDZE Apt Elev	<b>7590</b> <b>17</b> <b>17</b>
------------------------	-----------------------------	---------------------------------------

# RNAV (RNP) Z RWY 27

SAN DIEGO INTL (SAN)

RNP AR APCH.		MALS	MISSED APPROACH: Climb to 2500 on track 275° to SARGs and hold.		
▼ For uncompensated Baro-VNAV systems, procedure NA below 6°C or above 46°C. Straight-in Rwy 27 at night, operational VGSI required, remain on or above VGSI glidepath until threshold. For inop ALS, increase RNP 0.30 all Cats visibility to 2½ SM.		(A <sub>4</sub> )			
D-ATIS <b>134.8</b>	SOCAL APP CON <b>119.6 363.1 (WEST)</b> <b>124.35 279.625 (EAST)</b>	LINDBERGH TOWER <b>118.3 338.225</b>	GND CON <b>123.9</b>	CLNC DEL <b>125.9</b>	CPDLC



ELEV 17	<b>D</b>	TDZE 17		
2500	SARGs	See planview for multiple IF locations.		
tr 275°	△			
REEBO	CUJHI	SAYAE		
2000	2700	3200		
RW27	2000	GP 3.50° TCH 65		
5.2 NM	2.2 NM	1.6 NM		
CATEGORY	A	B	C	D
RNP 0.11 DA		617-1½	600 (600-1½)	
RNP 0.30 DA		778-2	761 (800-2)	
<b>AUTHORIZATION REQUIRED</b>				

SW-3, 09 SEP 2021 to 07 OCT 2021

SW-3, 09 SEP 2021 to 07 OCT 2021