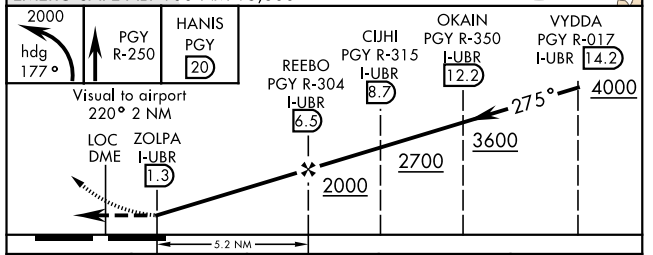
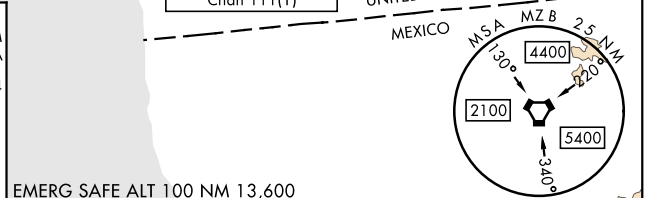
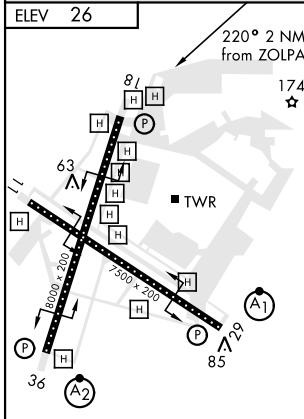
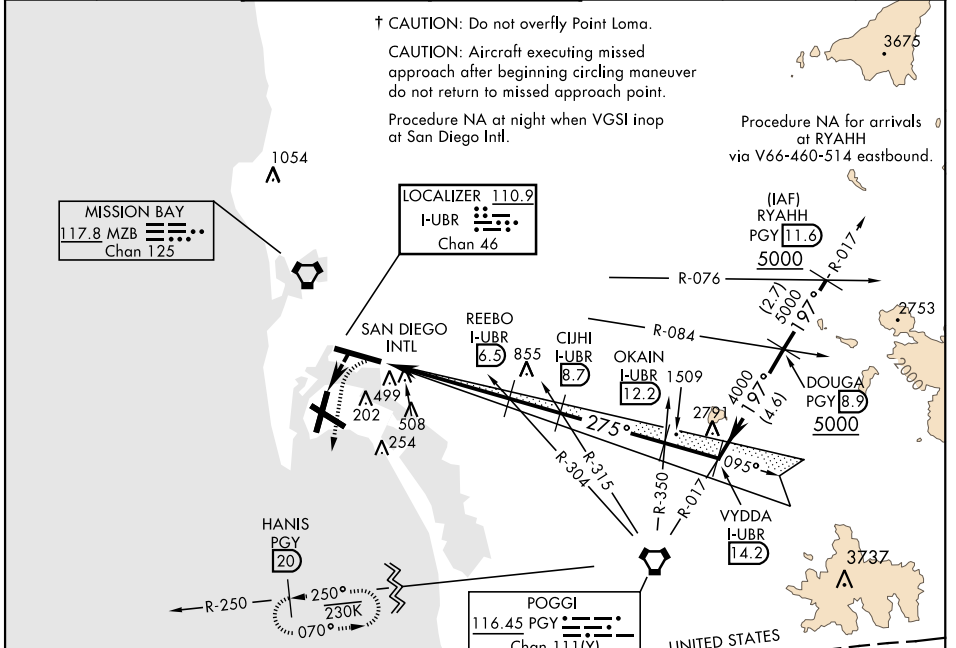


LOC/DME I-UBR <b>110.9</b> Chan 46	APCH CRS <b>275°</b>	Rwy Idg THRE Arprt Elev <b>N/A</b> <b>N/A</b> <b>26</b>	AL-374 [USN]	NORTH ISLAND NAS (HALSEY FIELD) (KNZY)
--	-------------------------	--	--------------	--

⚠ \* CAUTION: Maneuvering for circling approach not authorized W of Rwy18-36 centerline. Approach authorized for Rwy 18 or left downwind approach to Rwy 29 after flying down Rwy 18. † MISSED APPROACH: Climb and maintain 2000 via hdg 177°, intercept PGY VORTAC R-250 to HANIS and hold.

ATIS ★ <b>317.8</b>	SOCAL APP CON <b>125.15 317.55</b>	NORTH ISLAND TOWER★ <b>135.1 336.4</b>	LINDBERGH TOWER <b>118.3 338.225</b>	GND CON <b>118.0 360.675</b>	CLNC DEL <b>128.4 288.25</b>	PAR/ASR
------------------------	---------------------------------------	---	---	---------------------------------	---------------------------------	---------



FAF to MAP 5.2 NM					
Knots	60	90	120	150	180
Min:Sec	5:12	3:28	2:36	2:05	1:44
CIRCLING *	860-2½	834	(900-2½)	880-2½	854 (900-2½)
				880-2¾	854 (900-2¾)

SW-3, 09 SEP 2021 to 07 OCT 2021

SW-3, 09 SEP 2021 to 07 OCT 2021