

VOR/DME RWY 29

VORTAC PGY 116.45 Chan 111(Y)	APCH CRS 279°	Rwy ldg TDZE Arprt Elev 7500 26 26
---	-------------------------	--

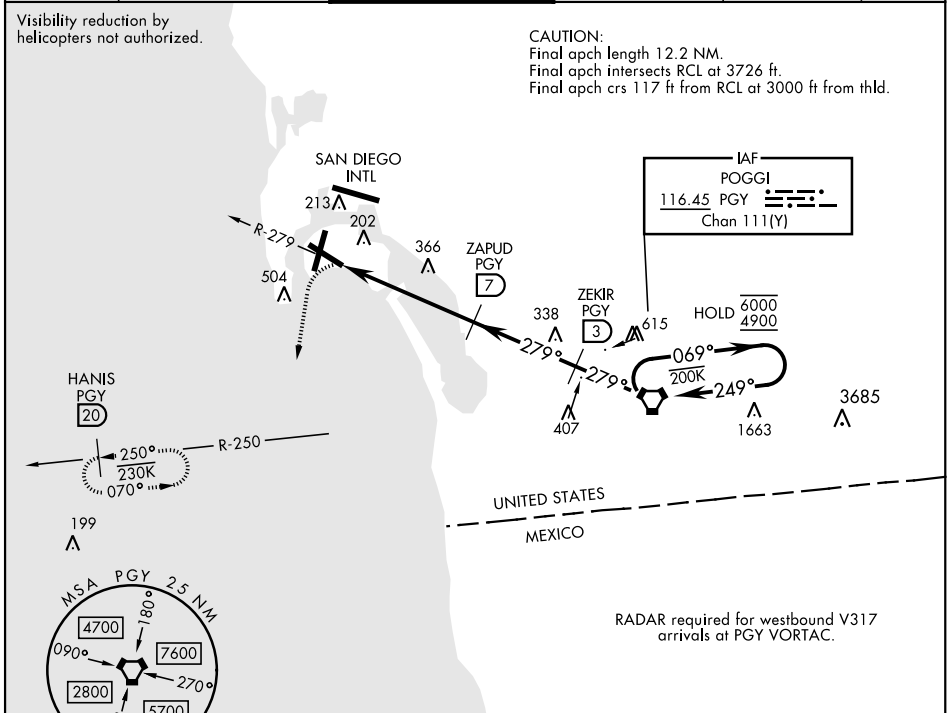
AL-374 [USN] NORTH ISLAND NAS (HALSEY FIELD) (KNZY)

* When ALS inop, increase CAT AB vis to 1 mile, CAT CD vis to 1 3/4 miles.
 ** Circling not authorized W of Rwy 18-36.
 Circling authorized to Rwy 18 only.

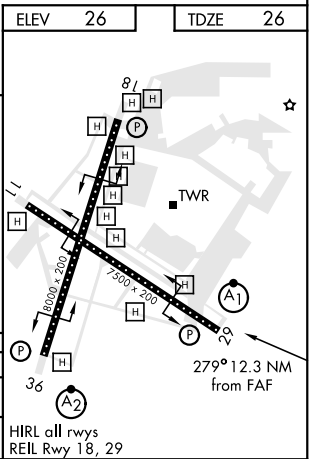
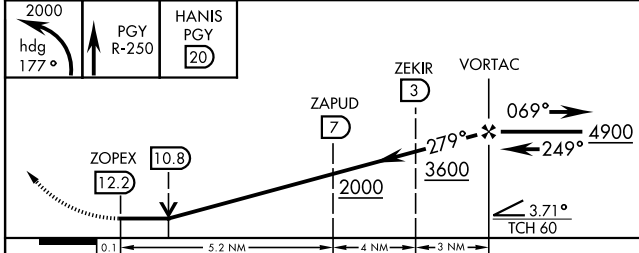


MISSED APPROACH: Climbing left turn to 2000 via hdg 177° intercept PGY VORTAC R-250 to HANIS and hold.

ATIS ★ 317.8	SOCAL APP CON 125.15 317.55	TOWER ★ 135.1 336.4	GND CON 118.0 360.675	CLNC DEL 128.4 288.25	PAR/ASR
------------------------	---------------------------------------	-------------------------------	---------------------------------	---------------------------------	---------



EMERG SAFE ALT 100 NM 13,600



CATEGORY	A	B	C	D
S-29 *	660-3/4 634 (700-3/4)		660-1 3/8 634 (700-1 3/8)	
CIRCLING **	660-1 634 (700-1)		NOT AUTHORIZED	

VOR/DME RWY 29

SW-3, 09 SEP 2021 to 07 OCT 2021

SW-3, 09 SEP 2021 to 07 OCT 2021