

LOC/DME I-SIA 108.9 Chan 26	APP CRS 194°	Rwy Idg TDZE Apt Elev	19L 8650 11 13	19R 7650 11 13
--	------------------------	-----------------------------	--	--

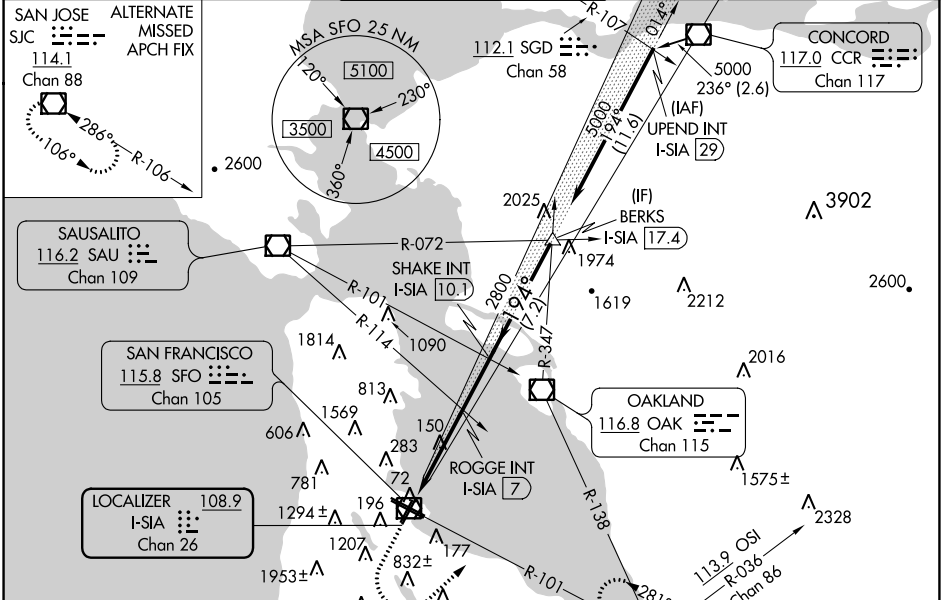
ILS or LOC RWY 19L

SAN FRANCISCO INTL (SFO)

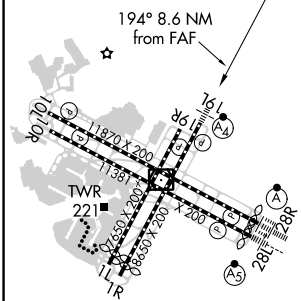
Simultaneous approach authorized. Simultaneous operations require use of vertical guidance; maintain last assigned altitude until established on the glidepath. Sidestep NA until passing ROGGE INT. For inop ALS, increase S-ILS 19L all Cats visibility to RVR 4500. Inop table does not apply to Sidestep 19R or S-LOC 19L Cats C/D.

MALSF Rwy 19L
MISSED APPROACH: Climb to 520 then climbing left turn to 4000 on SFO VOR/DME R-101 to DUMBA INT/SFO 15 DME and hold.

D-ATIS 113.7 115.8 118.85	NORCAL APP CON 134.5 338.2	SAN FRANCISCO TOWER 120.5 269.1	GND CON 121.8	CLNC DEL 118.2	CPDLC
---	--------------------------------------	---	-------------------------	--------------------------	-------



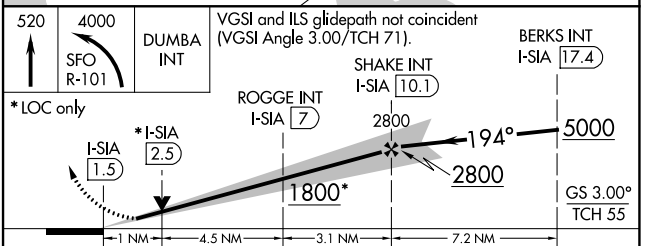
ELEV 13	D	TDZE 19L 11	TDZE 19R 11
---------	----------	-------------	-------------



HIRL all Rwys
TDZ/CL Rwys 19L and 28R
REIL Rwys 1L, 1R and 10L

FAF to MAP 8.6 NM

Knots	60	90	120	150	180
Min:Sec	8:36	5:44	4:18	3:26	2:52



CATEGORY	A	B	C	D
S-ILS 19L	300/40 289 (300-¾)			
S-LOC 19L	1800/55 1789 (1800-1)	1800-1¼ 1789 (1800-1½)	1800-3	1789 (1800-3)
ROGGE FIX MINIMUMS (DUAL VOR RECEIVERS OR DME REQUIRED)				
S-LOC 19L	400/40	389 (400-¾)	400/45	389 (400-¾)
SIDESTEP 19R	400/55	389 (400-1)	400-1½ 389 (400-1½)	400-2 389 (400-2)

SW-2, 09 SEP 2021 to 07 OCT 2021

SW-2, 09 SEP 2021 to 07 OCT 2021