

PIGGN TWO DEPARTURE (RNAV)

SW-3, 09 SEP 2021 to 07 OCT 2021

NOTE: RADAR required.

NOTE: RNAV-1.

NOTE: DME/DME/IRU or GPS required.

NOTE: Turboprop and turboprop only.

NOTE: Parachute jumping all hours, 14000' and below, north of route between PIGGN and FNCHH.

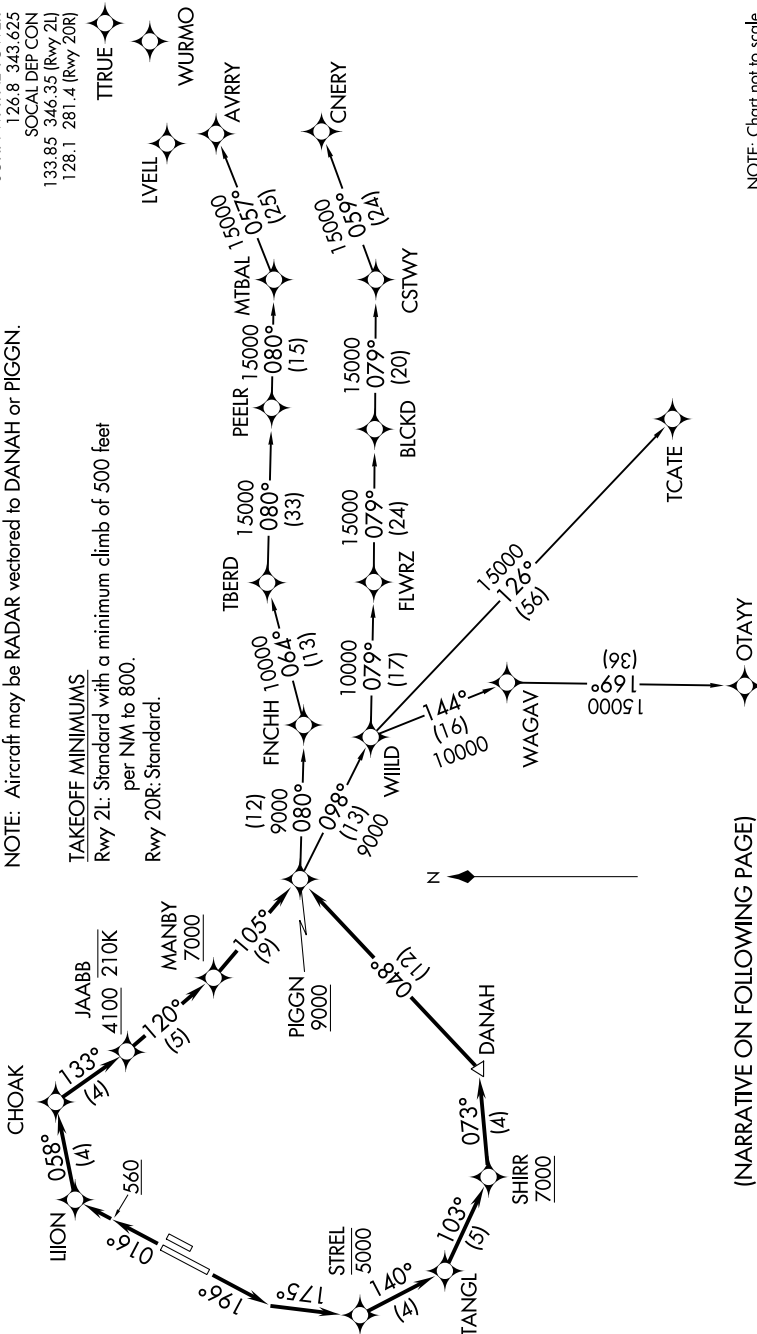
NOTE: Aircraft may be RADAR vectored to DANAH or PIGGN.

TAKEOFF MINIMUMS

Rwy 2L: Standard with a minimum climb of 500 feet per NM to 800.

Rwy 20R: Standard.

TOP ALTITUDE:
13000



PIGGN TWO DEPARTURE (RNAV)

(NARRATIVE ON FOLLOWING PAGE)

SW-3, 09 SEP 2021 to 07 OCT 2021

NOTE: Chart not to scale.