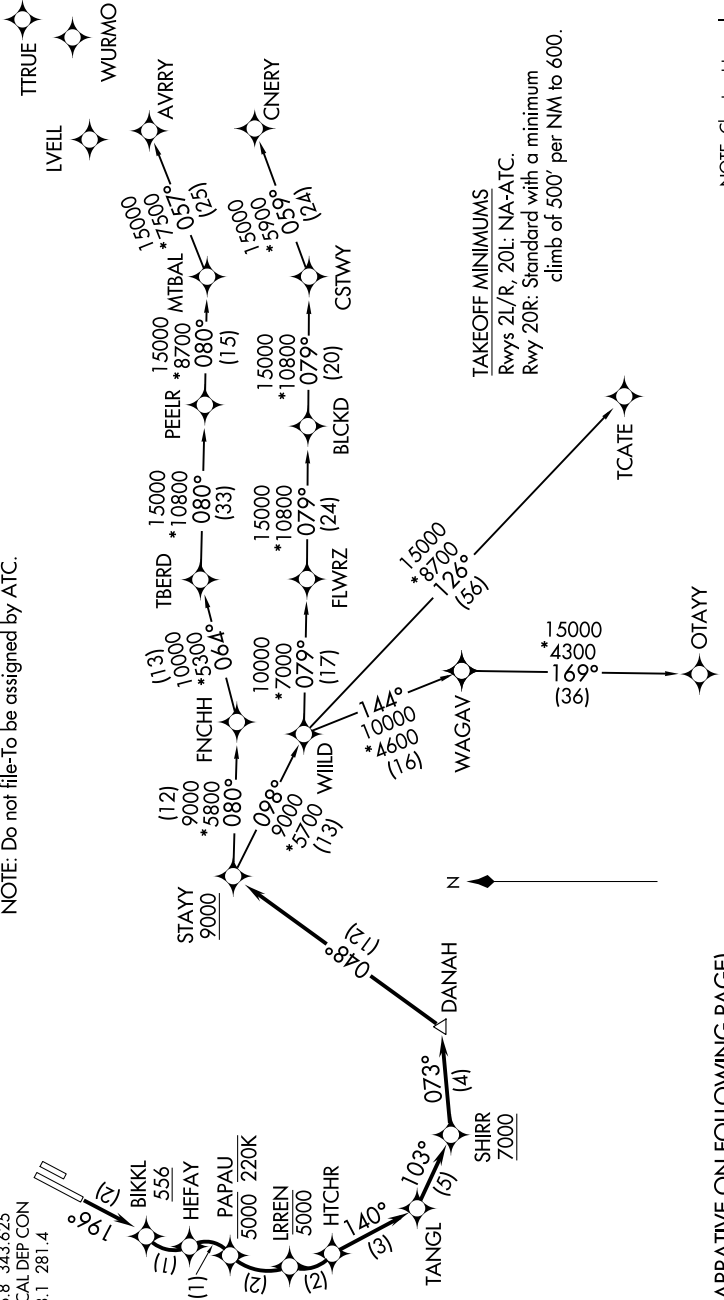


SW-3, 09 SEP 2021 to 07 OCT 2021

- D-ATIS 126.0
- CLNC DEL 118.0
- GPDC 120.8 (EAST)
- GND CON 132.25 (WEST)
- JOHN WAYNE TOWER\* 126.8 343.625
- SOCAL DEP CON 128.1 281.4

- NOTE: RNP 1.
- NOTE: RF required.
- NOTE: GPS required.
- NOTE: RADAR required.
- NOTE: Turbojet only.
- NOTE: Parachute jumping all hours, 14000 and below, north of route between STAYY and FNCHH.
- NOTE: Do not file-To be assigned by ATC.

TOP ALTITUDE:  
13000



TAKEOFF MINIMUMS  
 Rwy 2L/R, 20L: NA-ATC.  
 Rwy 20R: Standard with a minimum  
 climb of 500' per NM to 600.

NOTE: Chart not to scale.

(NARRATIVE ON FOLLOWING PAGE)

SW-3, 09 SEP 2021 to 07 OCT 2021