

SAVANNAH, GEORGIA

ILS or LOC RWY 28

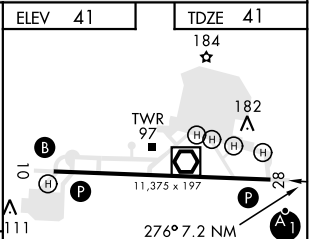
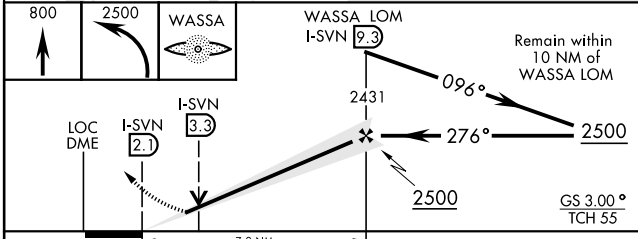
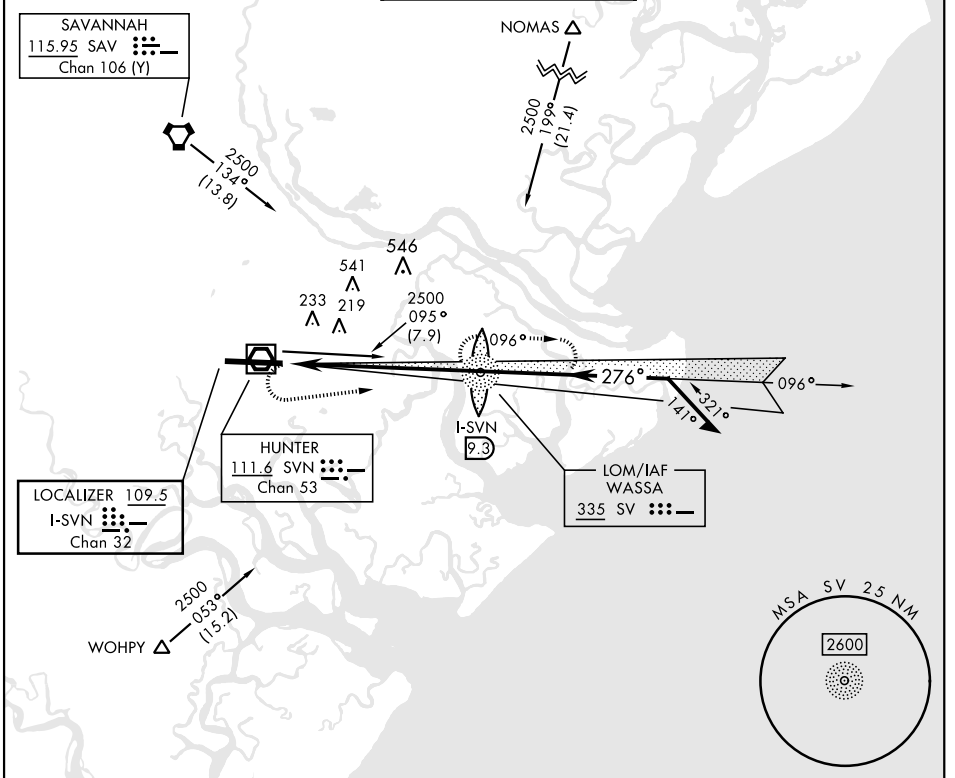
LOC/DME I-SVN 109.5 Chan 32	APCH CRS 276°	Rwy Ldg 11,375 TDZE 41 Arpt Elev 41
---	-------------------------	--

AL-381 [USA]

HUNTER AAF (KSVN)

ADF or DME required. ▼ * Circling not authorized N of Rwy 10-28 for CAT D.	ALSIF-1	MISSED APPROACH: Climb to 800, then climbing left turn to 2500 direct WASSA LOM and hold.
---	---------	---

ATIS 127.525 323.125	SAVANNAH APP CON 120.4 353.775	TOWER★ 124.975 (CTAF) 279.575	GND CON 121.8 291.675	ASR/PAR
--	--	--	---------------------------------	---------



CATEGORY	A	B	C	D
S-ILS 28	241/24		200	(200-½)
S-LOC 28	460/24	419 (500-½)	460/40 419 (500-¾)	460/50 419 (500-1)
CIRCLING *	500-1 459 (500-1)	520-1 479 (500-1)	520-1½ 479 (500-1½)	600-2 559 (600-2)

ELEV	41	TDZE	41		
			184		
REIL Rwy 10					
HIRL Rwy 10-28					
FAF to MAP 7.2 NM					
Knots	60	90	120	150	180
Min:Sec	7:12	4:48	3:36	2:53	2:24

SAVANNAH, GEORGIA
 Amt d 3 22AUG13

32°01'N-81°09'W

HUNTER AAF (KSVN)

ILS or LOC RWY 28

SE-4, 09 SEP 2021 to 07 OCT 2021

SE-4, 09 SEP 2021 to 07 OCT 2021