

RNAV (GPS) RWY 28

WAAS CH 82111 W28A	APCH CRS 276°	Rwy Idg 11,375 TDZE 41 Arpt Elev 41
--	-------------------------	--

AL-381 [USA]

HUNTER AAF (KSVN)

DME/DME RNP -0.3 NA.

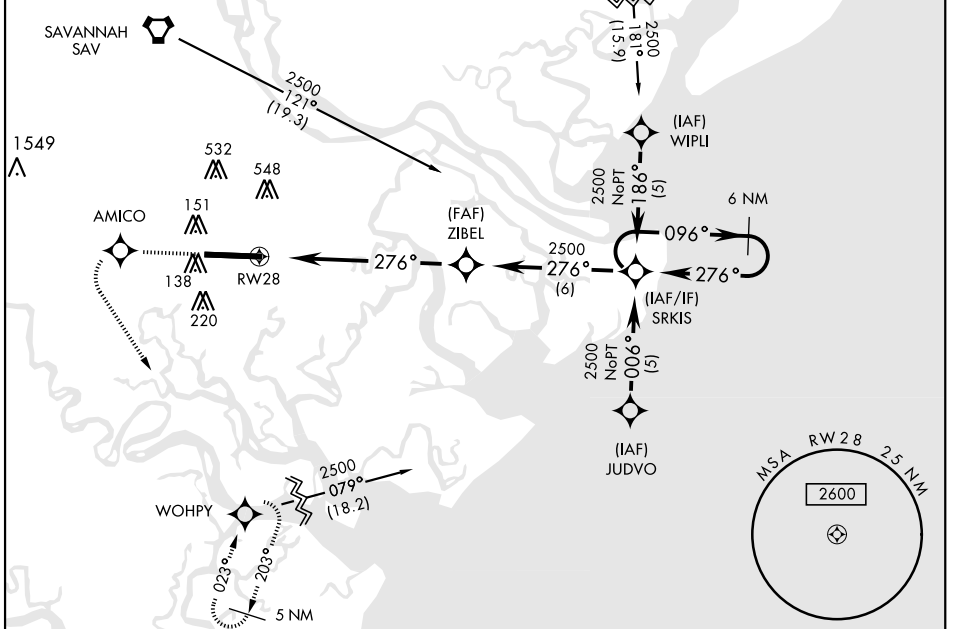
▼ *Circling not authorized N of Rwy 10-28 for CAT D.



MISSED APPROACH: Climb to 2000 direct AMICO and left turn on track 180° to WOHPY and hold.

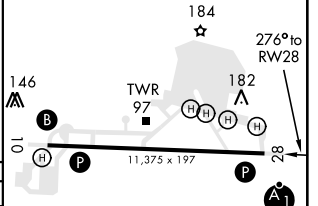
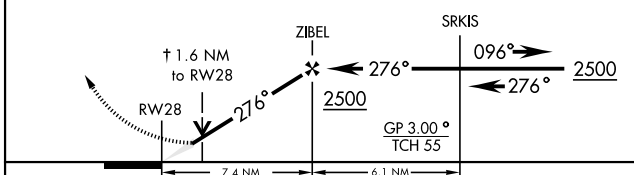
ATIS 127.525 323.125	SAVANNAH APP CON 120.4 353.775	TOWER ★ 124.975 (CTAF) 0 279.575	GND CON 121.8 291.675	ASR/PAR
--	--	---	---------------------------------	---------

For uncompensated Baro-VNAV systems, LNAV/VNAV NA below -15°C (5°F) or above 49°C (120°F)



2000
AMICO
tr 180°
↑ LNAV only

ELEV 41	TDZE 41
---------	---------



CATEGORY	A	B	C	D
LPV DA	241/24		200 (200-½)	
LNAV/VNAV DA	487/50		446 (500-1)	
LNAV MDA	600/24	559 (600-½)	600/50 559 (600-1)	600/60 559 (600-¼)
CIRCLING*	600-1	559 (600-1)	600-1½ 559 (600-1½)	600-2 559 (600-2)

HIRL Rwy 10-28 **0**
REIL Rwy 10 **0**

RNAV (GPS) RWY 28

SE-4, 09 SEP 2021 to 07 OCT 2021

SE-4, 09 SEP 2021 to 07 OCT 2021