

WAAS CH <b>42722</b> <b>W04A</b>	APP CRS <b>040°</b>	Rwy Idg TDZE Apt Elev	<b>7001</b> <b>338</b> <b>378</b>
--	------------------------	-----------------------------	---

# RNAV (GPS) RWY 4

SCHENECTADY COUNTY (SCH)

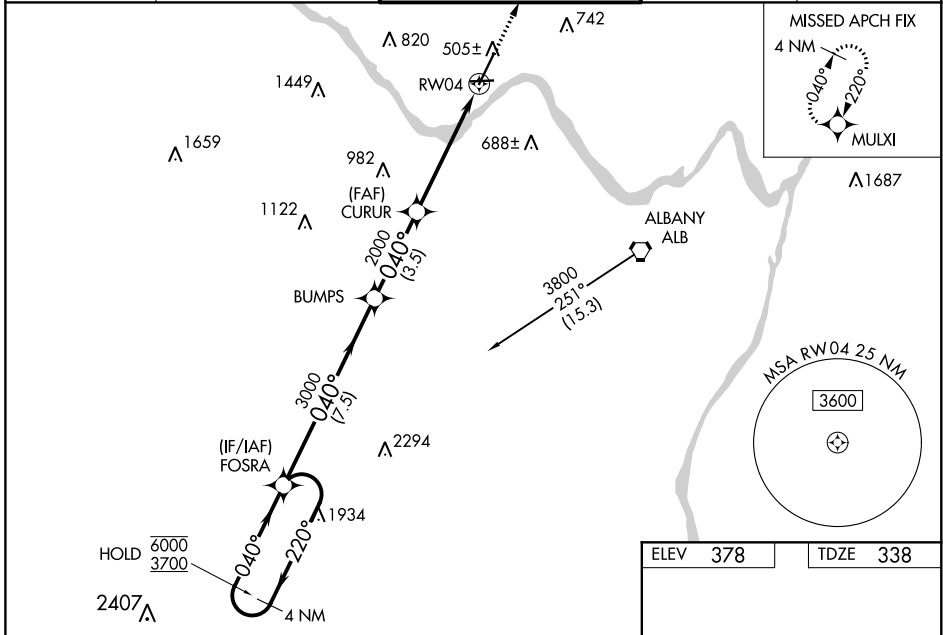
RNP APCH.

**▼** Circling Rwy 10 NA at night. Baro-VNAV and VDP NA when using Albany altimeter setting.  
**▲** Rwy 4 helicopter visibility reduction below 3/4 SM NA. Inop table does not apply to LPV.  
 For uncompensated Baro-VNAV systems, LNAV/VNAV NA below -15°C or above 54°C.  
 When local altimeter setting not received, use Albany altimeter setting and increase LPV DA to 621 feet, LNAV/VNAV DA to 638 feet, and increase all MDAs 40 feet. For inop ALS, increase LNAV/VNAV all Cats visibility to 3/4 SM and LNAV Cats A/B to 1 SM and Cats C/D to 1 1/2 SM. For inop ALS when using Albany altimeter setting, increase LPV all Cats visibility to 3/4 SM, increase LNAV/VNAV all Cats to 3/4 SM, increase LNAV Cats A/B visibility to 1 SM, and Cats C/D to 1 1/2 SM.



MISSED APPROACH:  
Climb to 3000 direct  
MULXI and hold.

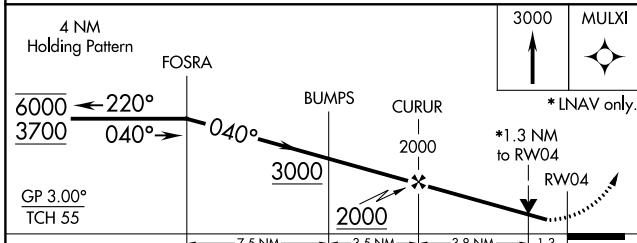
AWOS-3 <b>119.275</b>	ALBANY APP CON <b>118.05 263.075</b>	SCHENECTADY TOWER * <b>121.3 (CTAF) 321.1</b>	GND CON <b>121.9</b>	UNICOM <b>122.95</b>
--------------------------	---	--	-------------------------	-------------------------



NE-2, 09 SEP 2021 to 07 OCT 2021

NE-2, 09 SEP 2021 to 07 OCT 2021

ELEV 378	TDZE 338
----------	----------



CATEGORY	A	B	C	D
LPV DA		588-3/4	250 (300-3/4)	
LNAV/VNAV DA		605-3/4	267 (300-3/4)	
LNAV MDA	800-3/4	462 (500-3/4)	800-1	462 (500-1)
<b>C</b> CIRCLING	880-1 502 (600-1)	940-1 562 (600-1)	1120-2 1/4 742 (800-2 1/4)	1320-3 942 (1000-3)

