



LOC/DME I-SHR 108.7 Chan 24	APP CRS 326°	Rwy Idg 8301 TDZE 3985 Apt Elev 4021
--	------------------------	---

ILS or LOC/DME RWY 33

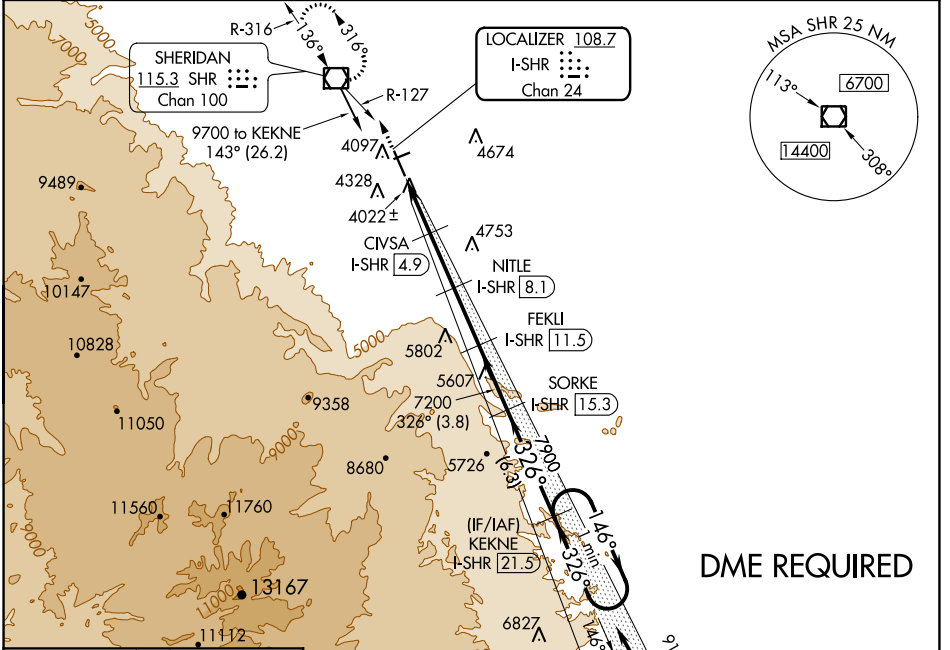
SHERIDAN COUNTY (SHR)

When local altimeter setting not received, procedure NA.
 Night landing: Rwy 24 NA. For inoperative MALS/R, increase S-LOC 33 Cats C and D visibility to ½ mile.

MALS/R  MISSED APPROACH: Climb to 7000 on heading 326° and on SHR VOR/DME R-127 to SHR VOR/DME and hold, continue climb-in-hold to 7000.

 -19°C

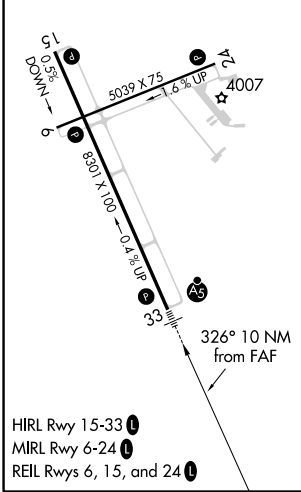
ASOS 135.175	SALT LAKE CENTER 127.75 351.9	UNICOM 123.0 (CTAF)
------------------------	---	-------------------------------



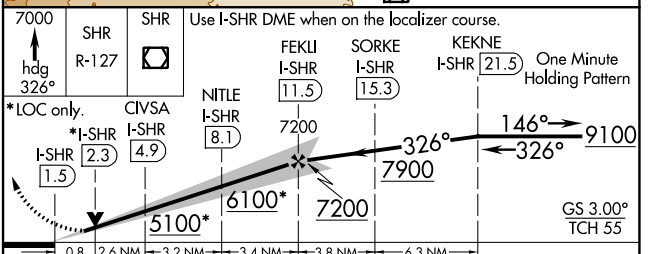
NW-1, 09 SEP 2021 to 07 OCT 2021

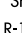
NW-1, 09 SEP 2021 to 07 OCT 2021

ELEV 4021	D	TDZE 3985
-----------	----------	-----------



- HIRL Rwy 15-33
- MIRL Rwy 6-24
- REIL Rws 6, 15, and 24



7000	SHR	Use I-SHR DME when on the localizer course.	FEKLI	SORKE	KEKNE	One Minute Holding Pattern
hdg R-127			I-SHR 11.5	I-SHR 15.3	I-SHR 21.5	
*LOC only.	CIVSA	NITLE				
*I-SHR 1.5	I-SHR 2.3	I-SHR 4.9	I-SHR 8.1			
0.8	2.6 NM	3.2 NM	3.4 NM	3.8 NM	6.3 NM	
CATEGORY	A	B	C	D		
S-ILS 33		4185-½	200 (200-½)			
S-LOC 33		4280-½	295 (300-½)			
C CIRCLING	4600-1 579 (600-1)	4640-1 619 (700-1)	4860-2½ 839 (900-2½)	5220-3 1199 (1200-3)		