

VOR/DME SHR	APP CRS	Rwy Idg TDZE	8301
115.3	131°	Apt Elev	4014
Chan 100			4021

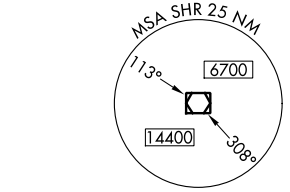
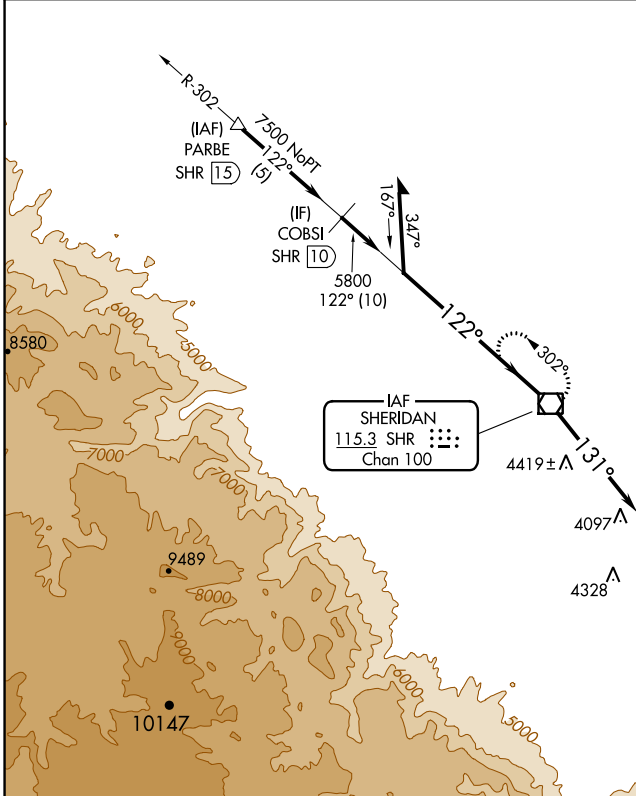
VOR RWY 15

SHERIDAN COUNTY (SHR)

When local altimeter setting not received, procedure NA. Night landing: Rwy 24 NA.

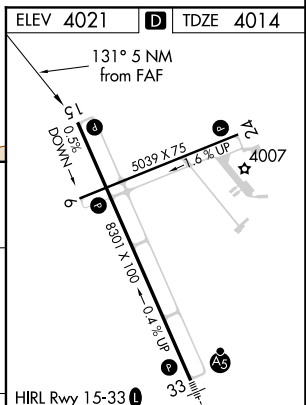
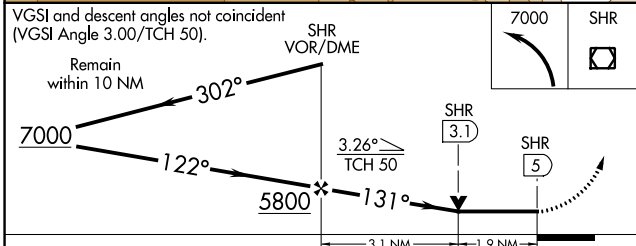
MISSED APPROACH: Climbing left turn to 7000 direct SHR VOR/DME and hold, continue climb-in-hold to 7000.

ASOS 135.175	SALT LAKE CENTER 127.75 351.9	UNICOM 123.0 (CTAF)
------------------------	---	-------------------------------



NW-1, 09 SEP 2021 to 07 OCT 2021

NW-1, 09 SEP 2021 to 07 OCT 2021



CATEGORY	A	B	C	D
S-15	4680-1	666 (700-1)	4680-1 $\frac{7}{8}$	666 (700-1 $\frac{7}{8}$)
C CIRCLING	4680-1	659 (700-1)	4860-2 $\frac{1}{2}$ 839 (900-2 $\frac{1}{2}$)	5220-3 1199 (1200-3)

HIRL Rwy 15-33 | MIRL Rwy 6-24 | REIL Rws 6, 15, and 24

FAF to MAP 5 NM

Knots	60	90	120	150	180
Min:Sec	5:00	3:20	2:30	2:00	1:40