



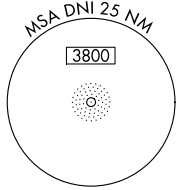
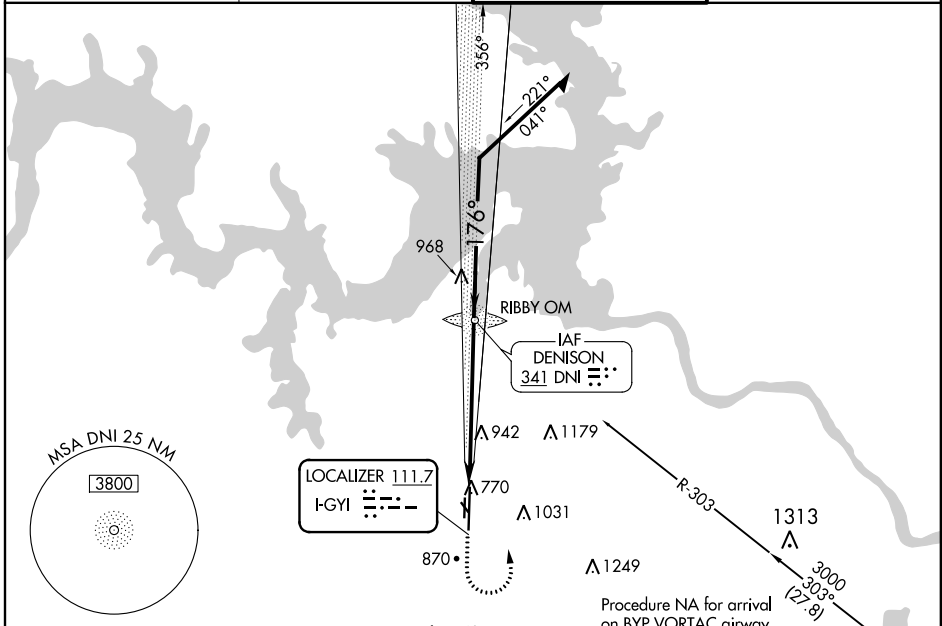
LOC I-GYI 111.7	APP CRS 176°	Rwy Idg TDZE 741 Apt Elev 749
---------------------------	------------------------	---

ILS or LOC RWY 17L

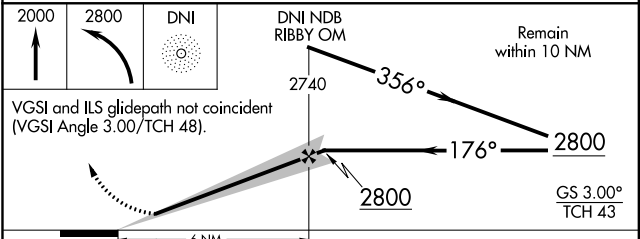
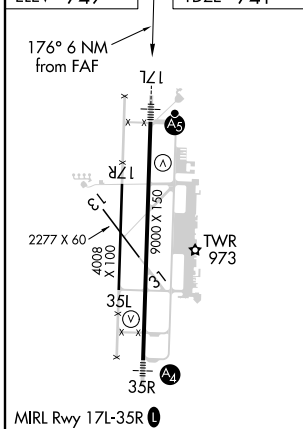
NORTH TEXAS RGNL/PERRIN FLD (GYI)

ADF required.	MALSR 	MISSED APPROACH: Climb to 2000 then climbing left turn to 2800 direct DNI NDB and hold.
 Circling Rwy 13, 17R, 31, 35L NA at night. For inop ALS, increase S-LOC-17L Cat C/D visibility to 1 3/8 SM.		

ATIS 118.775	FORT WORTH CENTER 124.75 323.0	NORTH TEXAS TOWER ★ 120.575 (CTAF) 233.7	GND CON 124.125
------------------------	--	---	---------------------------



ELEV 749	TDZE 741
----------	----------



CATEGORY	A	B	C	D
S-ILS 17L	941-1/2 200 (200-1/2)			
S-LOC 17L	1240-1/2 499 (500-1/2)		1240-1 499 (500-1)	
<input checked="" type="checkbox"/> CIRCLING	1300-1 551 (600-1)		1400-1 3/4 651 (700-1 3/4) 1540-2 1/2 791 (800-2 1/2)	

FAF to MAP 6 NM					
Knots	60	90	120	150	180
Min:Sec	6:00	4:00	3:00	2:24	2:00

SC-2, 09 SEP 2021 to 07 OCT 2021

SC-2, 09 SEP 2021 to 07 OCT 2021