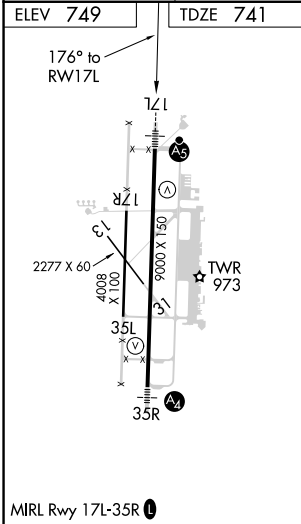
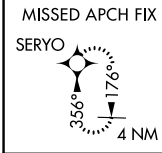
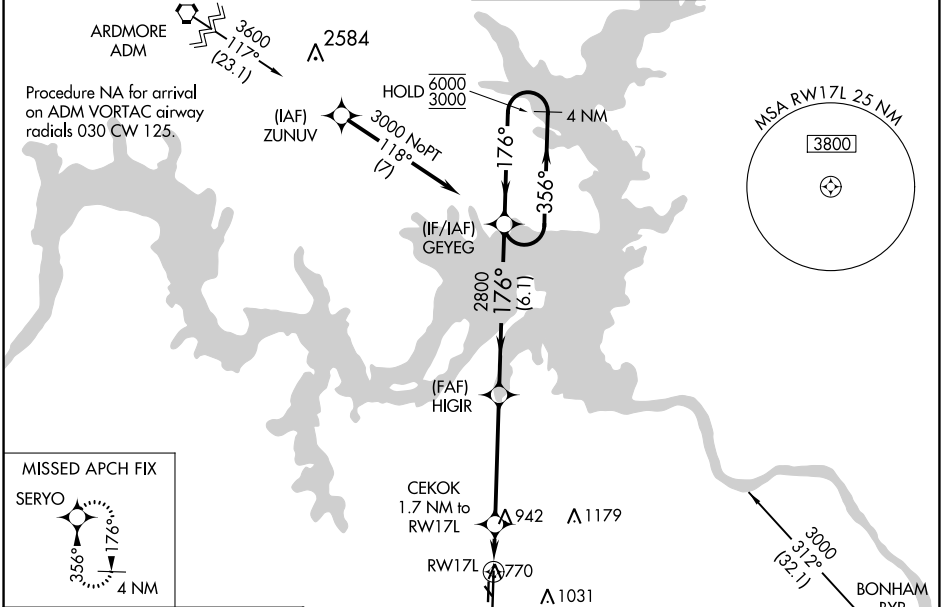


WAAS CH 86528 W17A	APP CRS 176°	Rwy Idg TDZE Apt Elev	9000 741 749
--	------------------------	-----------------------------	---

RNAV (GPS) RWY 17L

NORTH TEXAS RGNL/PERRIN FLD (GYI)

RNP APCH.		MALSR	MISSED APPROACH: Climb to 3000 direct SERYO and hold.
<p>⚠ Circling Rwy 13, 17R, 31, 35L NA at night. For uncompensated Baro-VNAV systems, LNAV/VNAV NA below -16°C or above 54°C. For inop ALS, increase LNAV/VNAV all Cats visibility to 7/5 SM.</p>			
ATIS 118.775	FORT WORTH CENTER 124.75 323.0	NORTH TEXAS TOWER ★ 120.575 (CTAF) 233.7	GND CON 124.125



3000	SERYO	VGSi and RNAV glidepath not coincident (VGSi angle 3.00/TCH 48).		4 NM Holding Pattern
*LNAV only.		CEKOK 1.7 NM to RW17L	HIGIR 2800	GEYEG 6000/3000
		1.7 NM	4.6 NM	6.1 NM
		*1320		GP 3.00° TCH 43
CATEGORY	A	B	C	D
LPV DA	941-1/2		200 (200-1/2)	
LNAV/VNAV DA	1015-1/2		274 (300-1/2)	
LNAV MDA	1200-1/2	459 (500-1/2)	1200-7/8	459 (500-7/8)
CIRCLING	1300-1	551 (600-1)	1400-3/4 651 (700-1/4)	1540-2 1/2 791 (800-2 1/2)

SC-2, 09 SEP 2021 to 07 OCT 2021

SC-2, 09 SEP 2021 to 07 OCT 2021