

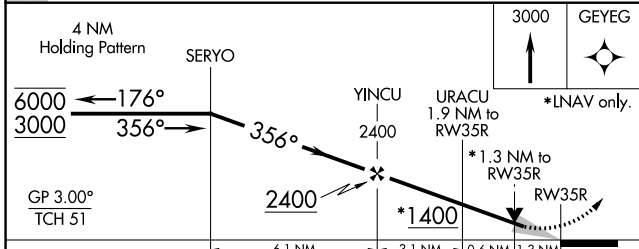
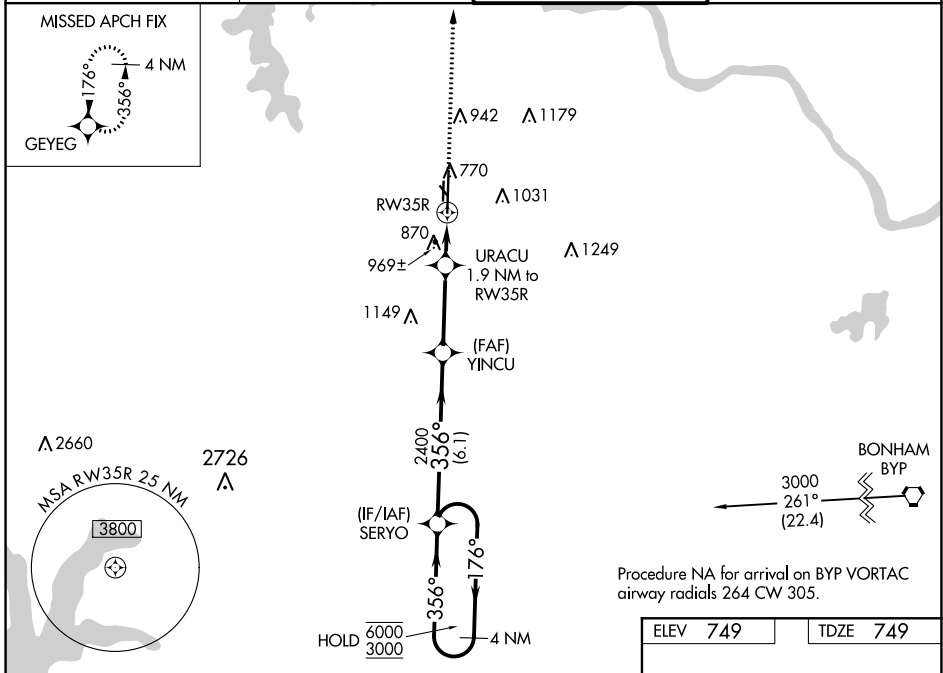
WAAS CH 65928 W35A	APP CRS 356°	Rwy ldg TDZE 749 Apt Elev 749	9000
--	------------------------	---	-------------

RNAV (GPS) RWY 35R

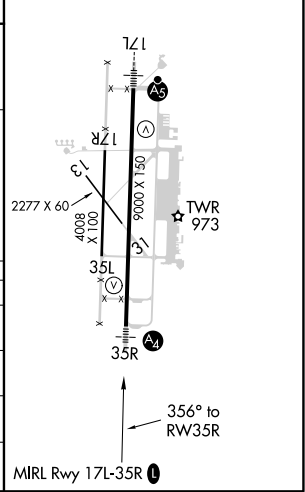
NORTH TEXAS RGNL/PERRIN FLD (GYI)

RNP APCH.	MALS	MISSED APPROACH: Climb to 3000 direct GEYEG and hold.
<p>▼ Circling Rwy 13, 17R, 31, 35L NA at night. Inop table does not apply to LPV and LNAV/VNAV. ▲ For uncompensated Baro-VNAV systems, LNAV/VNAV NA below -1.6°C or above 54°C.</p>		

ATIS 118.775	FORT WORTH CENTER 124.75 323.0	NORTH TEXAS TOWER ★ 120.575 (CTAF) 233.7	GND CON 124.125
------------------------	--	--	---------------------------



ELEV 749	TDZE 749
----------	----------



CATEGORY	A	B	C	D
LPV DA	949-3/4		200 (200-3/4)	
LNAV/VNAV DA	1294-1 1/8		545 (600-1 1/8)	
LNAV MDA	1220-3/4	471 (500-3/4)	1220-1 1/8	471 (500-1 1/8)
CIRCLING	1300-1	551 (600-1)	1400-1 3/4 651 (700-1 3/4)	1540-2 1/2 791 (800-2 1/2)

SC-2, 09 SEP 2021 to 07 OCT 2021

SC-2, 09 SEP 2021 to 07 OCT 2021