

# HI-ILS or LOC Y RWY 33

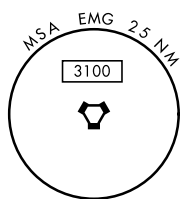
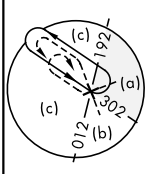
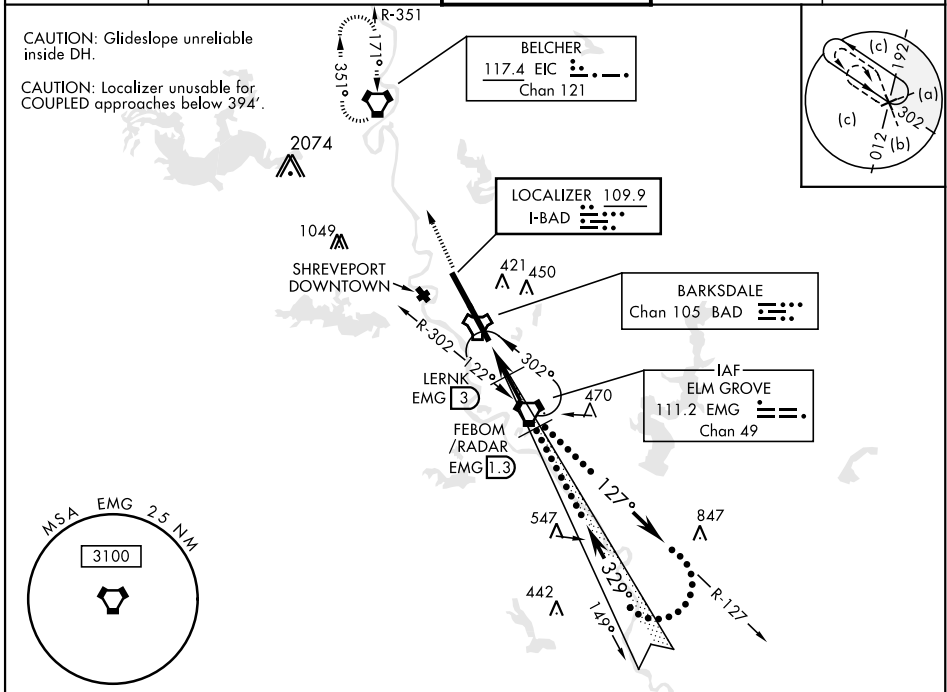
LOC I-BAD <b>109.9</b>	APCH CRS <b>329°</b>	Rwy Idg <b>11,758</b> THRE <b>161</b> Arpt Elev <b>165</b>	JAL-391 [USAF]	BARKSDALE AFB (KBAD)
---------------------------	-------------------------	--	----------------	----------------------

\* When ALS inop, increase CAT CDE RVR to 40 and vis to 3/4 mile.  
 \*\* When ALS inop, increase CAT CDE RVR to 60 and vis to 1 1/8 miles.  
 \*\*\* Circling not authorized W of Rwy.



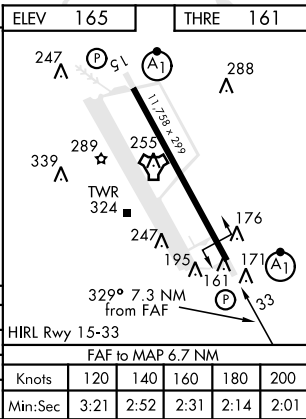
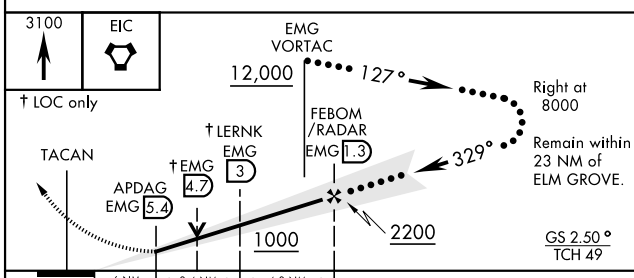
MISSED APPROACH: Climb to 3100 direct to EIC VORTAC and hold.

ATIS <b>307.025</b>	SHREVEPORT APP CON 320°-152° <b>123.75 360.725</b> 153°-319° <b>119.9 335.55</b>	BARKSDALE TOWER <b>128.25 278.3</b>	GND CON <b>121.8 253.5</b>	ASR
------------------------	--	--	-------------------------------	-----



## RADAR or DME REQUIRED

EMERG SAFE ALT 100 NM 3300



CATEGORY	C	D	E
S-ILS 33*	361/24	200 (200-1/2)	
S-LOC 33**	560/35	399 (400-3/4)	
CIRCLING ***	NOT AUTHORIZED	760-2 595 (600-2)	780-2 1/4 615 (700-2 1/4)

# HI-ILS or LOC Y RWY 33

SC-4, 09 SEP 2021 to 07 OCT 2021

SC-4, 09 SEP 2021 to 07 OCT 2021