


# HI-ILS or LOC Z RWY 33

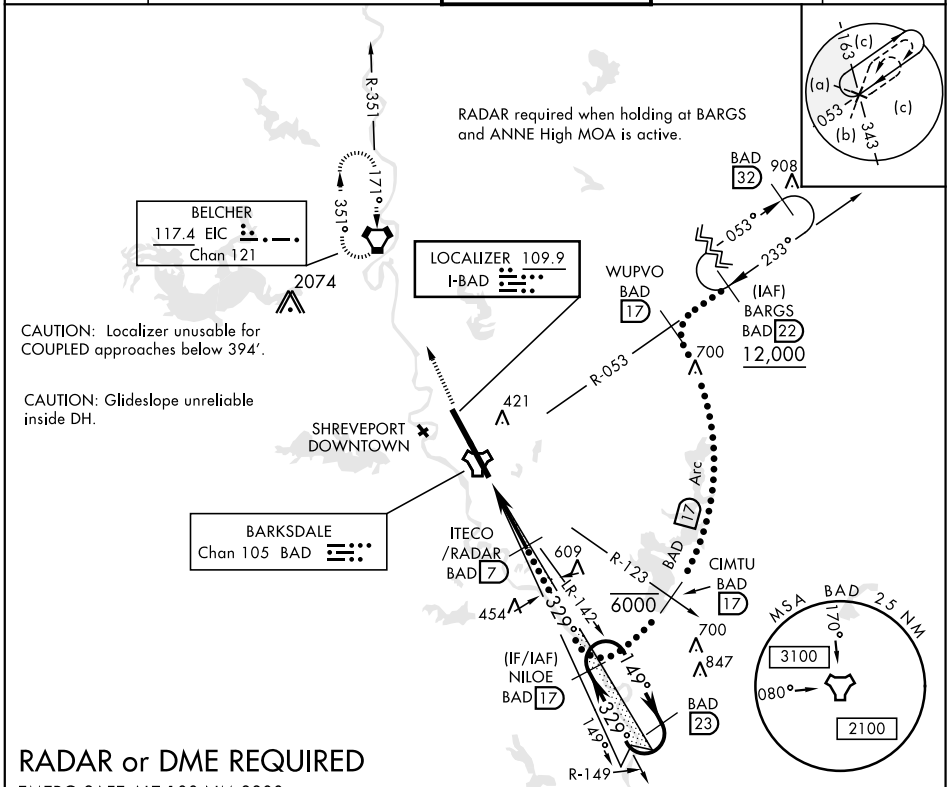
LOC I-BAD <b>109.9</b>	APCH CRS <b>329°</b>	Rwy ldg <b>11,758</b> THRE <b>161</b> Arprt Elev <b>165</b>	JAL-391 [USAF]	BARKSDALE AFB (KBAD)
---------------------------	-------------------------	---	----------------	----------------------

\* When ALS inop, increase CAT CDE RVR to 40 and vis to 3/4 mile.  
 \*\* When ALS inop, increase CAT CDE RVR to 60 and vis to 1 1/8 miles.  
 \*\*\* Circling not authorized W of Rwy.

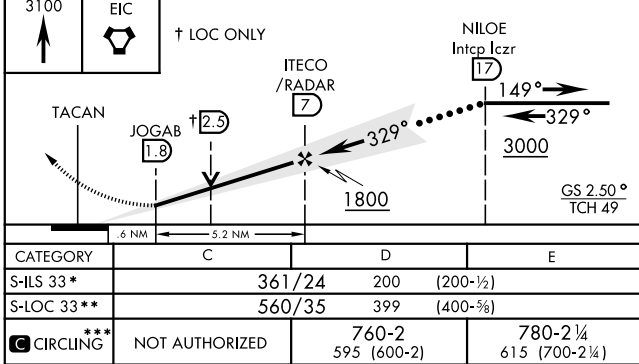
ALS-1 

MISSED APPROACH: Climb to 3100 direct to EIC VORTAC and hold.

ATIS <b>307.025</b>	SHREVEPORT APP CON 320°-152° <b>123.75 360.725</b> 153°-319° <b>119.9 335.55</b>	BARKSDALE TOWER <b>128.25 278.3</b>	GND CON <b>121.8 253.5</b>	ASR
------------------------	--	--	-------------------------------	-----



**RADAR or DME REQUIRED**  
EMERG SAFE ALT 100 NM 3300



ELEV	165	THRE	161		
247	287	255	288		
339	289	195	176		
TWR 324	247	161	33		
HIRL Rwy 15-33					
FAF to MAP 5.3 NM					
Knots	120	140	160	180	200
Min:Sec	2:36	2:14	1:57	1:44	1:34

# HI-ILS or LOC Z RWY 33

SC-4, 09 SEP 2021 to 07 OCT 2021

SC-4, 09 SEP 2021 to 07 OCT 2021