

ILS or LOC W RWY 33

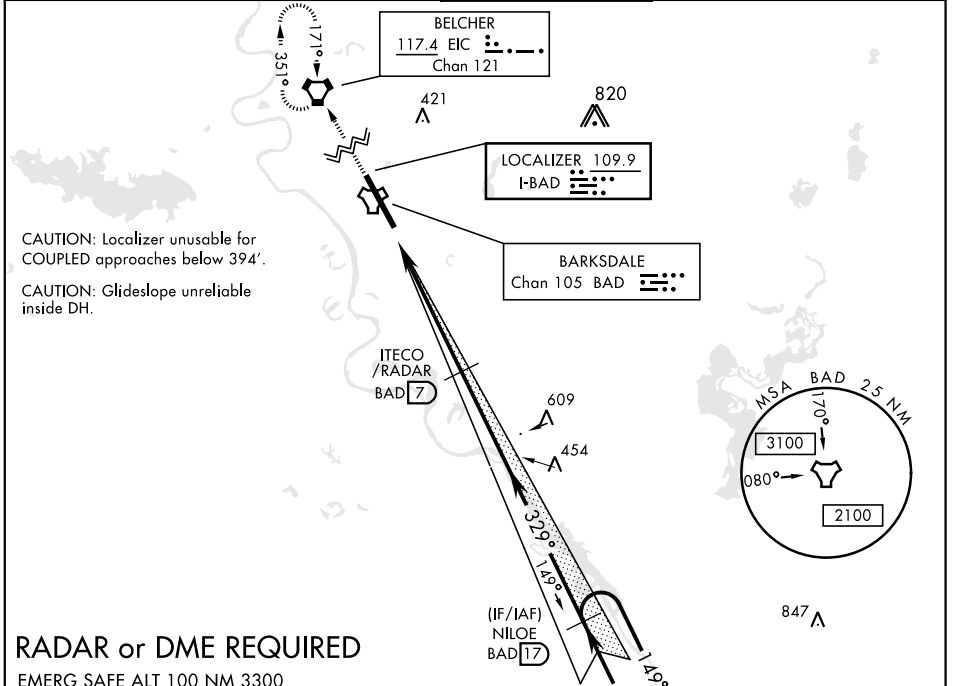
LOC I-BAD 109.9	APCH CRS 329°	Rwy Ldg 11,758 THRE 161 Arprt Elev 165	AL-391 [USAF]	BARKSDALE AFB (KBAD)
---------------------------	-------------------------	--	---------------	----------------------

* When ALS inop, increase RVR to 40 and vis to 3/8 mile.
 ** When ALS inop, increase CAT AB RVR to 55 and vis to 1 mile, CAT CDE RVR to 60 and vis to 1 1/8 miles.
 *** Circling not authorized W of Rwy.



MISSED APPROACH: Climb to 3100 direct EIC VORTAC and hold.

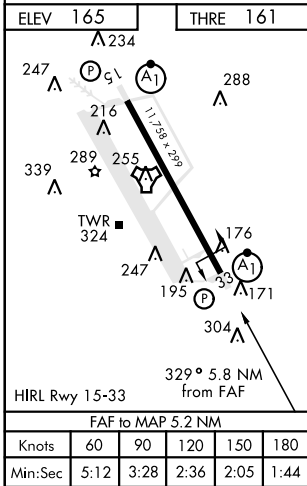
ATIS 307.025	SHREVEPORT APP CON 320°-152° 123.75 360.725 153°-319° 119.9 335.55	BARKSDALE TOWER 128.25 278.3	GND CON 121.8 253.5	ASR
------------------------	--	--	-------------------------------	-----



CAUTION: Localizer unusable for COUPLED approaches below 394'.
 CAUTION: Glideslope unreliable inside DH.

RADAR or DME REQUIRED

EMERG SAFE ALT 100 NM 3300



3100	EIC	↑ LOC ONLY	NILOE (17)		
TACAN	JOGAB (1.8)	ITCO/RADAR (7)	NILOE (17)		
6 NM	5.2 NM	1800	3000		
GS 2.50°	TCH 49				
CATEGORY	A	B	C	D	E
S-ILS 33 *	361/24		200	(200-1/2)	
S-LOC 33 **	560/24	399 (400-1/2)	560/35	399	(400-5/8)
CIRCLING ***	NOT AUTHORIZED			760-2 595 (600-2)	780-2 1/4 615 (700-2 1/4)

ILS or LOC W RWY 33

SC-4, 09 SEP 2021 to 07 OCT 2021

SC-4, 09 SEP 2021 to 07 OCT 2021