

# ILS or LOC Z RWY 15

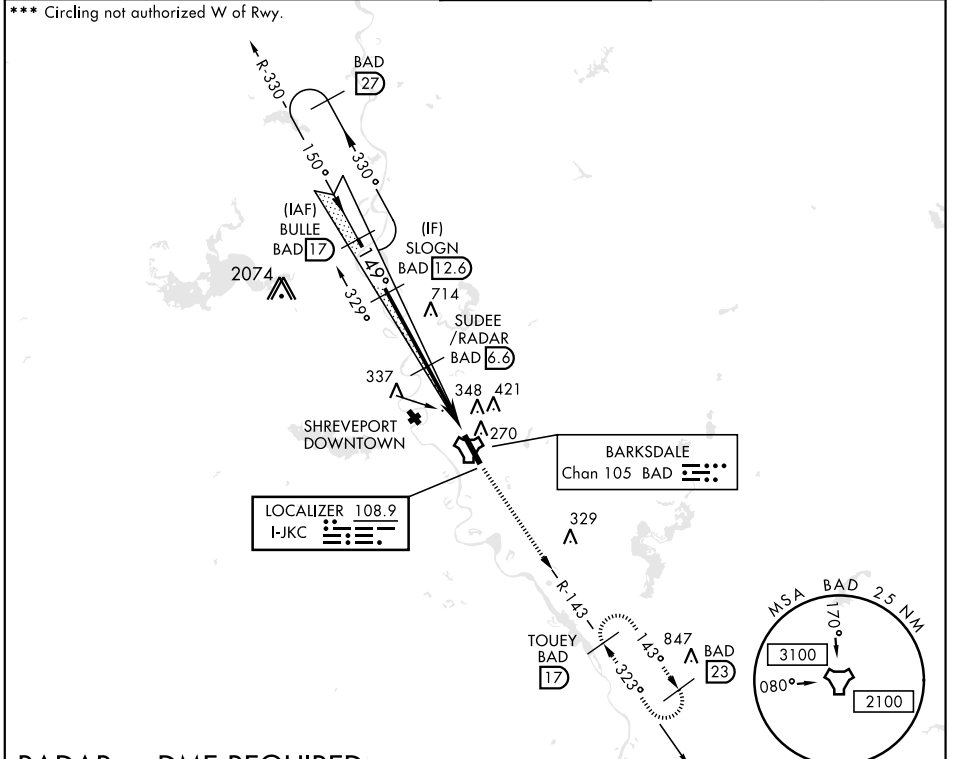
LOC I-JKC <b>108.9</b>	APCH CRS <b>149°</b>	Rwy Ldg <b>11,758</b> THRE <b>163</b> Arprt Elev <b>165</b>	AL-391 [USAF]	BARKSDALE AFB (KBAD)
---------------------------	-------------------------	---	---------------	----------------------

\* When ALS inop, increase RVR to 40 and vis to 3/4 mile.  
 \*\* When ALS inop, increase CAT AB RVR to 55 and vis to 1 mile, CAT CDE vis to 1 1/8 miles.

ALSF-1 

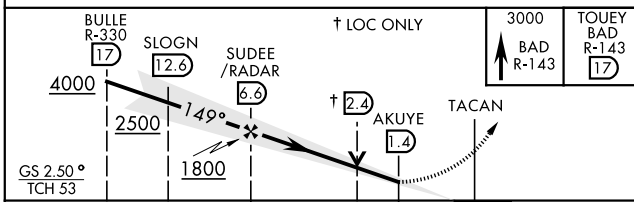
MISSED APPROACH: Climb to 3000 via BAD R-143 direct TOUEY and hold.

ATIS <b>307.025</b>	SHREVEPORT APP CON 320°-152° <b>123.75 360.725</b> 153°-319° <b>119.9 335.55</b>	BARKSDALE TOWER <b>128.25 278.3</b>	GND CON <b>121.8 253.5</b>	ASR
------------------------	--	--	-------------------------------	-----



## RADAR or DME REQUIRED

EMERG SAFE ALT 100 NM 3300



ELEV 165	THRE 163
HIRL Rwy 15-33	
FAF to MAP 5.2 NM	
Knots	60 90 120 150 180
Min:Sec	5:12 3:28 2:36 2:05 1:44

# ILS or LOC Z RWY 15

SC-4, 09 SEP 2021 to 07 OCT 2021

SC-4, 09 SEP 2021 to 07 OCT 2021