

TACAN Y RWY 33

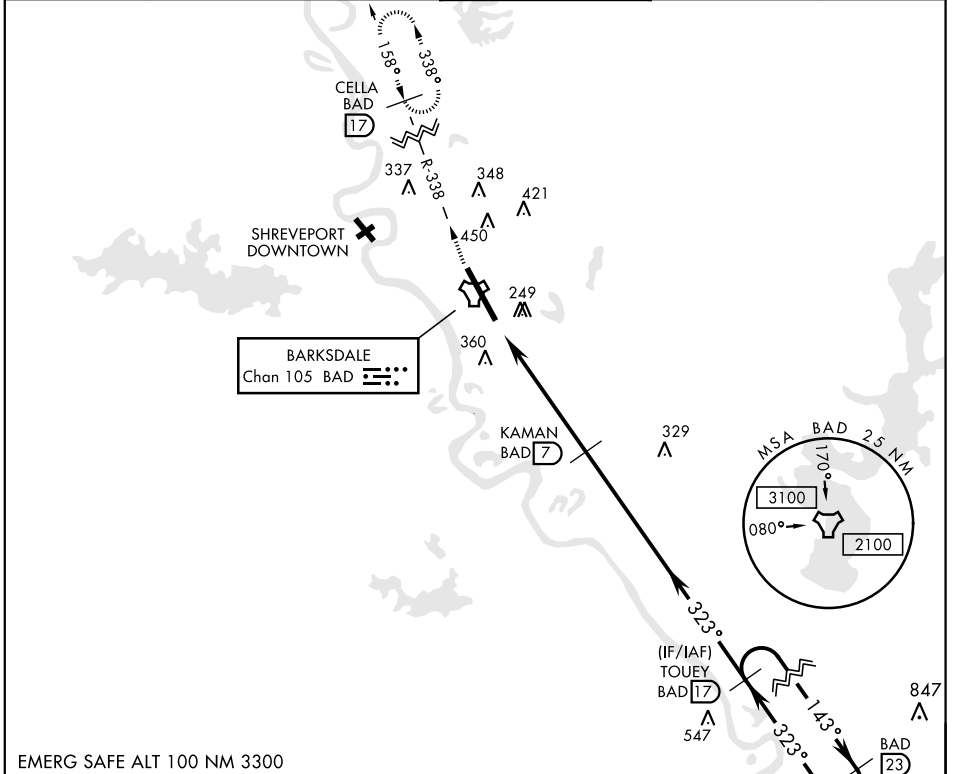
TACAN BAD Chan 105	APCH CRS 323°	Rwy ldg 11,758 THRE 161 Arprt Elev 165	AL-391 [USAF]	BARKSDALE AFB (KBAD)
-----------------------	------------------	--	---------------	----------------------

* When ALS inop, increase CAT AB RVR to 55 and vis to 1 mile, CAT CDE vis to 1 3/8 miles.
 ** Circling not authorized W of Rwy.

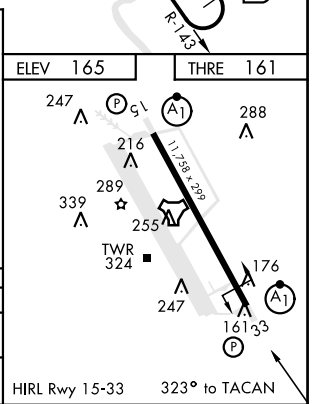
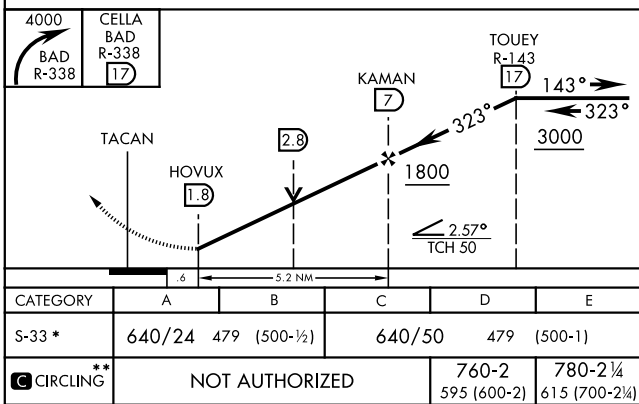


MISSED APPROACH: Climb to 4000 via BAD R-338 direct CELLA and hold.

ATIS 307.025	SHREVEPORT APP CON 320°-152° 123.75 360.725 153°-319° 119.9 335.55	BARKSDALE TOWER 128.25 278.3	GND CON 121.8 253.5	ASR
-----------------	--	---------------------------------	------------------------	-----



EMERG SAFE ALT 100 NM 3300



BOSSIER CITY, LOUISIANA	32° 30' N-93° 40' W	BARKSDALE AFB (KBAD)
-------------------------	---------------------	----------------------

Amdt 6 25JUN15

TACAN Y RWY 33

SC-4, 09 SEP 2021 to 07 OCT 2021

SC-4, 09 SEP 2021 to 07 OCT 2021