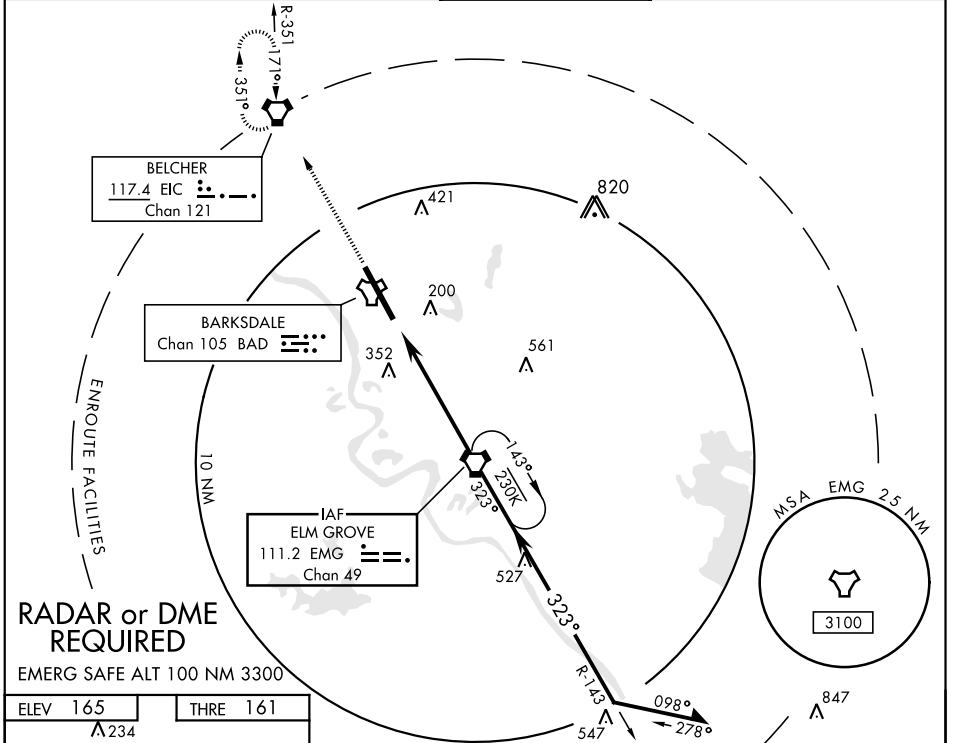


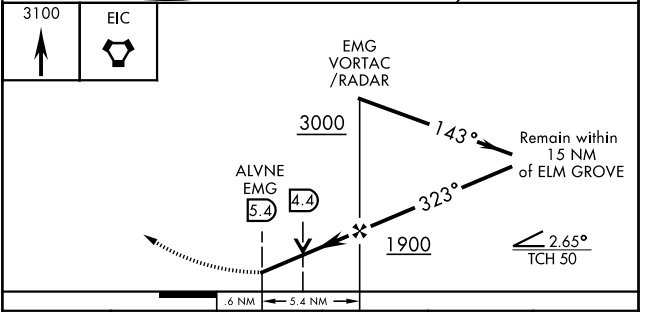
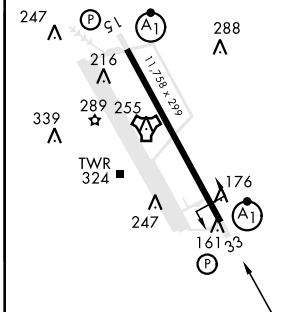
VOR/DME Y RWY 33

VORTAC EMG 111.2 Chan 49	APCH CRS 323°	Rwy Idg 11,758 THRE 161 Arprt Elev 165	AL-391 [USAF]	BARKSDALE AFB (KBAD)
* When ALS inop, increase CAT AB RVR to 55 and vis to 1 mile, CAT CDE vis to 1 3/8 miles. ** Circling not authorized W of Rwy.				ALSF-1
				MISSED APPROACH: Climb to 3100 direct EIC VORTAC and hold.

ATIS 307.025	SHREVEPORT APP CON 320°-152° 123.75 360.725 153°-319° 119.9 335.55	BARKSDALE TOWER 128.25 278.3	GND CON 121.8 253.5	ASR
------------------------	--	--	-------------------------------	-----



ELEV 165	THRE 161
-----------------	-----------------



HIRL Rwy 15-33	323° 6 NM from VORTAC				
FAF to MAP 5.4 NM					
Knots	60	90	120	150	180
Min:Sec	5:24	3:36	2:42	2:10	1:48
CIRCLING **	NOT AUTHORIZED			760-2 595 (600-2)	780-2 1/4 615 (700-2 1/4)

VOR/DME Y RWY 33

SC-4, 09 SEP 2021 to 07 OCT 2021

SC-4, 09 SEP 2021 to 07 OCT 2021