

LOC/DME I-SPA <b>109.1</b> Chan <b>28</b>	APP CRS <b>047°</b>	Rwy Idg <b>5852</b> TDZE <b>802</b> Apt Elev <b>802</b>
---	------------------------	---

# ILS or LOC RWY 5

SPARTANBURG DOWNTOWN MEML/SIMPSON FLD (SPA)

DME required.	MALS R	MISSED APPROACH: Climb to 1300 then climbing left turn to 3000 direct SPA VORTAC and hold, continue climb-in-hold to 3000.
<b>V</b> <b>A</b> For inop ALS, increase S-LOC 5 Cats C/D visibility to 1 SM.		

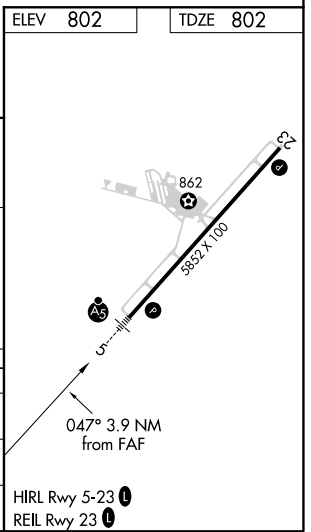
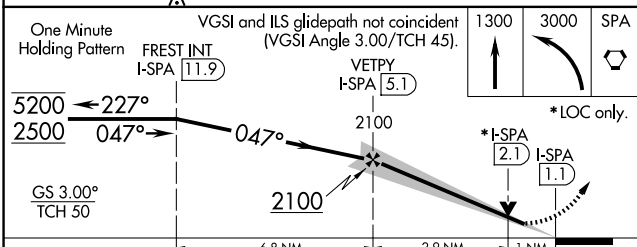
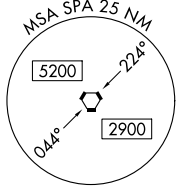
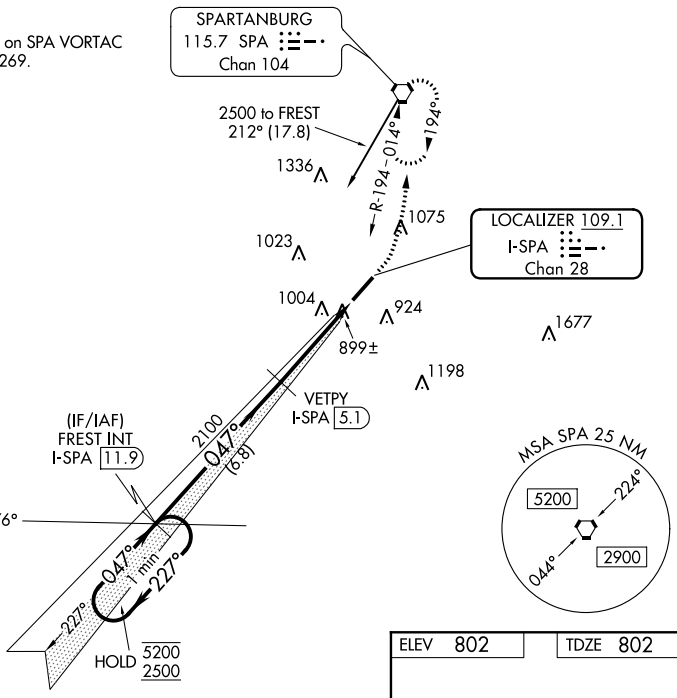
AWOS-3 <b>133.925</b>	GREER APP CON * <b>119.4 350.2</b>	CLNC DEL <b>120.55</b>	UNICOM <b>123.0 (CTAF)</b> <b>0</b>
--------------------------	---------------------------------------	---------------------------	--

Procedure NA for arrival on SPA VORTAC airway radials 231 CW 269.

SPARTANBURG  
115.7 SPA **014**  
Chan 104

LOCALIZER **109.1**  
I-SPA **028**  
Chan 28

LOM  
JUDKY  
521 GM **028**



CATEGORY	A	B	C	D
S-ILS 5	1002-1/2		200 (200-1/2)	
S-LOC 5	1160-1/2	358 (400-1/2)	1160-5/8	358 (400-5/8)
<b>C</b> CIRCLING	1320-1	518 (600-1)	1380-1 1/2 578 (600-1 1/2)	1420-2 618 (700-2)

# ILS or LOC RWY 5

SE-2, 09 SEP 2021 to 07 OCT 2021

SE-2, 09 SEP 2021 to 07 OCT 2021