

APP CRS 108°	Rwy Idg TDZE Apt Elev	N/A N/A 1375
------------------------	-----------------------------	-----------------------------------------

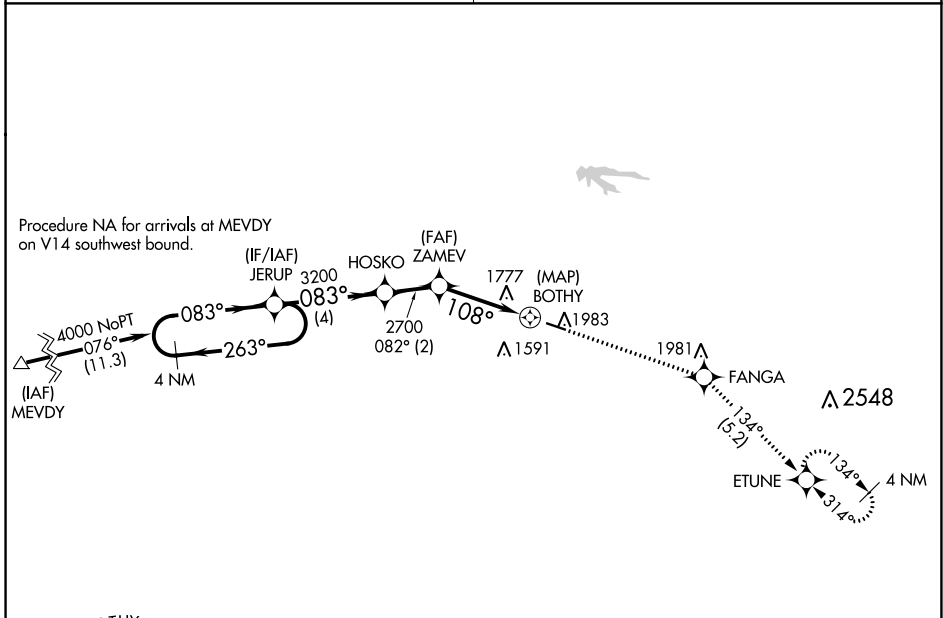
RNAV (GPS)-A DOWNTOWN (3DW)

▽ Circling NA north of Rwy 11-29. DME/DME RNP-0.3 NA.
△ NA Use Springfield-Branson Nil altimeter setting; when not received, use Branson West altimeter setting and increase all MDA 60 feet. Procedure NA at night. Helicopter visibility reduction below 1 SM NA.

MISSED APPROACH: Climb to 4000 direct FANGA and track 134° to ETUNE and hold.

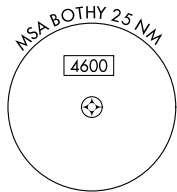
SPRINGFIELD APP CON
124.95 353.925

UNICOM
122.8 (CTAF) 0*

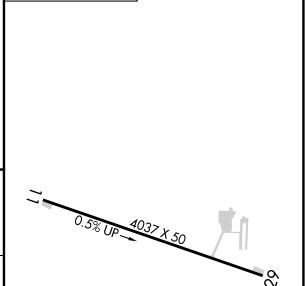
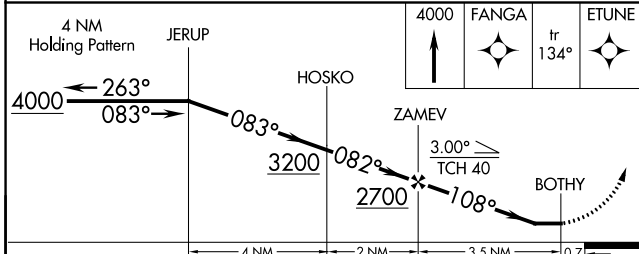


NC-3, 09 SEP 2021 to 07 OCT 2021

NC-3, 09 SEP 2021 to 07 OCT 2021



ELEV 1375



CATEGORY	A	B	C	D
C CIRCLING	2060-1	685 (700-1)	NA	

MIRL Rwy 11-29 **0***