

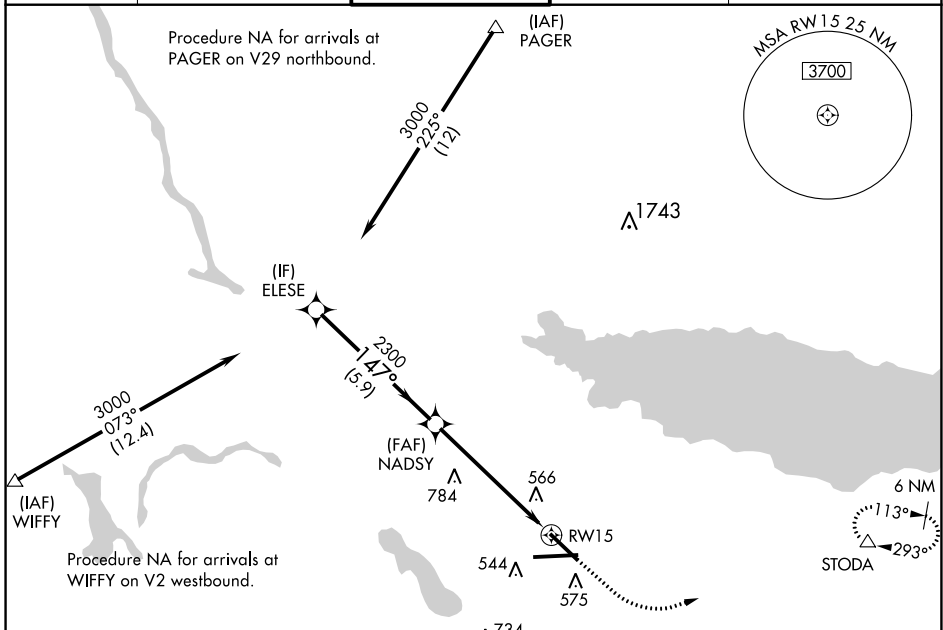
WAAS CH 50117 W15A	APP CRS 147°	Rwy Idg TDZE Apt Elev	7500 417 421
--	------------------------	-----------------------------	---

RNAV (GPS) RWY 15

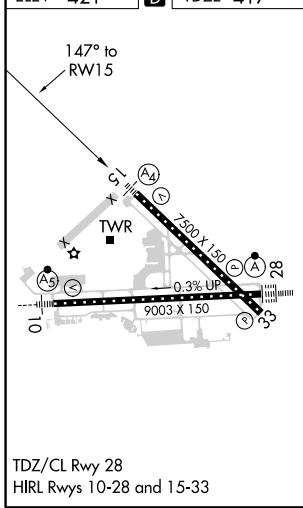
SYRACUSE HANCOCK INTL (SYR)

RNP APCH.	MALS 	MISSED APPROACH: Climb to 1600 then climbing left turn to 3200 direct STODA and hold, continue climb-in-hold to 3200.
<p> Rwy 15 helicopter visibility reduction below 3/4 SM NA.</p> <p> Inop table does not apply to LPV DA all Cats. For uncompensated Baro-VNAV systems, LNAV/VNAV NA below -19°C or above 54°C.</p>		

ATIS 124.225	SYRACUSE APP CON 126.125 269.125	SYRACUSE TOWER 120.3 239.0	GND CON 121.7 348.6	CLNC DEL 125.05 257.775
------------------------	--	--------------------------------------	-------------------------------	-----------------------------------



ELEV 421	D	TDZE 417
----------	----------	----------



	ELESE	NADSY	1600	3200	STODA
	3000	2300	↑	↶	△
	147°	2300	*1.3 NM to RWY15		
	2300		*LNAV only.		
	5.9 NM	4.5 NM	1.3 NM		
CATEGORY	A	B	C	D	
LPV DA	667-3/4		250 (300-3/4)		
LNAV/VNAV DA	894-1 1/8		477 (500-1 1/8)		
LNAV MDA	880-3/4 463 (500-3/4)		880-1 1/8 463 (500-1 1/8)		
C CIRCLING	900-1 479 (500-1)	920-1 499 (500-1)	1020-1 1/2 599 (600-1 1/2)	1180-2 1/2 759 (800-2 1/2)	

NE-2, 09 SEP 2021 to 07 OCT 2021

NE-2, 09 SEP 2021 to 07 OCT 2021