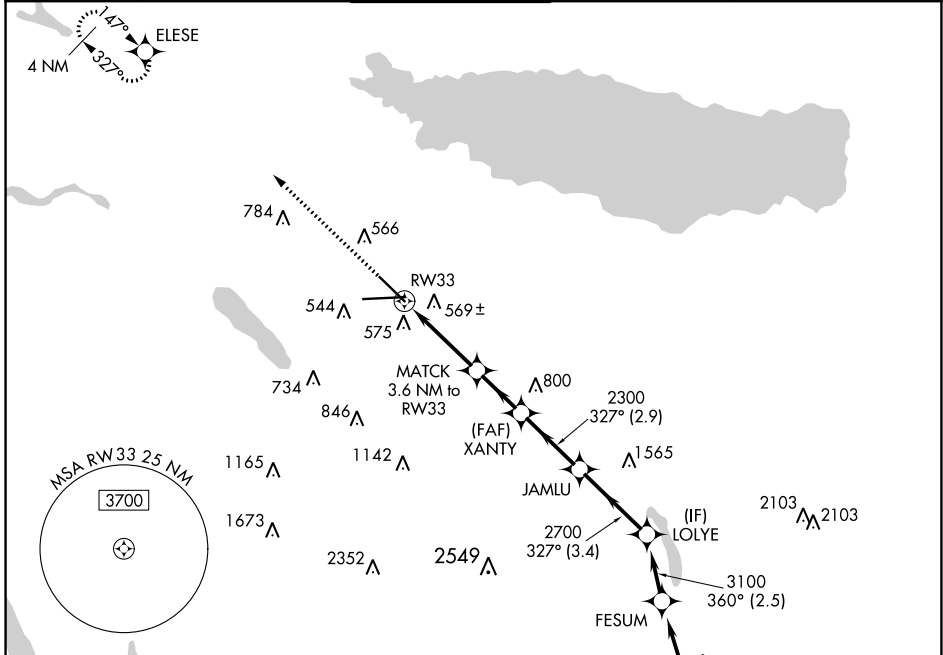


WAAS CH <b>81823</b> <b>W33A</b>	APP CRS <b>327°</b>	Rwy Idg TDZE Apt Elev	<b>7500</b> <b>409</b> <b>421</b>
--	------------------------	-----------------------------	---

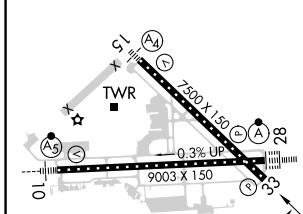
# RNAV (GPS) RWY 33

SYRACUSE HANCOCK INTL (SYR)

RNP APCH.		SYRACUSE TOWER <b>120.3 239.0</b>		GND CON <b>121.7 348.6</b>	CLNC DEL <b>125.05 257.775</b>
▼ Rwy 33 helicopter visibility reduction below 3/4 SM NA. For uncompensated ▲ Baro-VNAV systems, LNAV/VNAV NA below -20°C or above 54°C.				MISSED APPROACH: Climb to 3000 direct ELESE and hold.	
ATIS <b>124.225</b>	SYRACUSE APP CON <b>126.125 269.125</b>	SYRACUSE TOWER <b>120.3 239.0</b>		GND CON <b>121.7 348.6</b>	CLNC DEL <b>125.05 257.775</b>



ELEV 421	<b>D</b>	TDZE 409
----------	----------	----------



3000	ELESE	XANTY	JAMLU	LOLYE
↑	◆	◆	◆	◆
* LNAV only	* 1.1 NM to RWY33	2300	2700	3100
	MATCH 3.6 NM to RWY33			
	1580*	2300	2700	3100
	1.1 NM	2.5 NM	2.2 NM	2.9 NM
				3.4 NM
				GP 3.00° TCH 50

CATEGORY	A		B		C		D	
LPV DA			715/45		306 (300-7/8)			
LNAV/VNAV DA			882-1 3/8		473 (500-1 3/8)			
LNAV MDA	820/55		411 (400-1)		820/60		411 (400-1 1/4)	
<b>C</b> CIRCLING	900-1 479 (500-1)		920-1 499 (500-1)		1020-1 1/2 599 (600-1 1/2)		1180-2 1/2 759 (800-2 1/2)	

NE-2, 09 SEP 2021 to 07 OCT 2021

NE-2, 09 SEP 2021 to 07 OCT 2021