

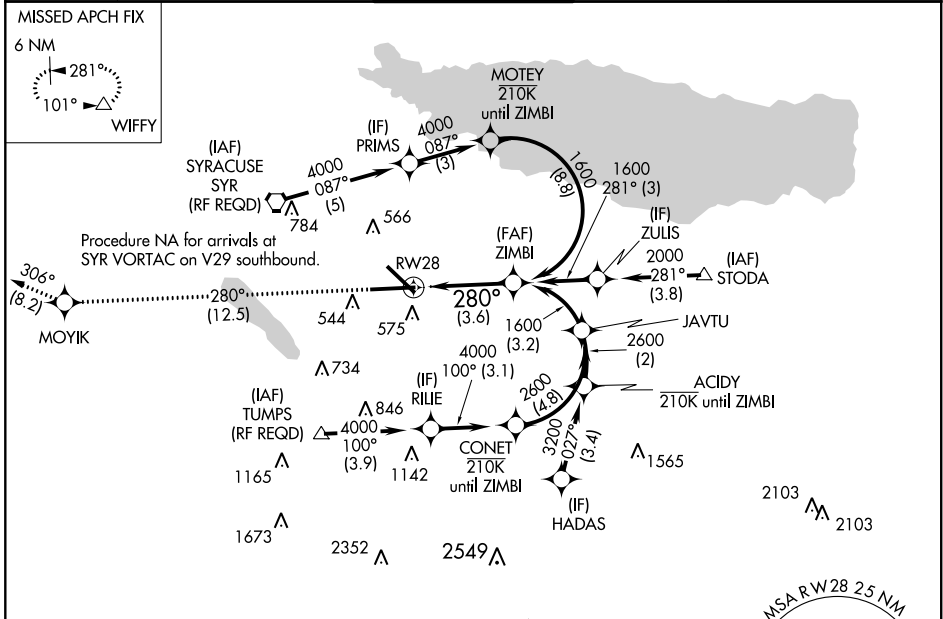
APP CRS 280°	Rwy Idg TDZE Apt Elev	9003 413 421
------------------------	-----------------------------	---

RNAV (RNP) Y RWY 28

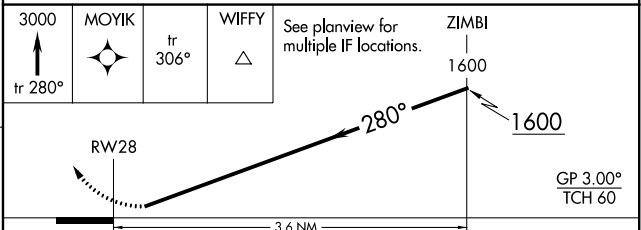
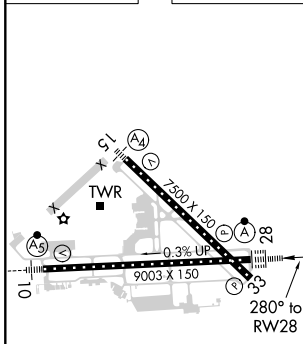
SYRACUSE HANCOCK INTL (SYR)

RNP AR APCH.	ALSF-2	MISSED APPROACH: Climb to 3000 on track 280° to MOYIK and on track 306° to WIFFY and hold.
▼ For uncompensated Baro-VNAV systems, procedure NA below -18°C or above 54°C. For inop ALS, increase RNP 0.15 all Cats visibility to 1%. For inop ALS, increase RNP 0.30 all Cats visibility to 1%.		

ATIS 124.225	SYRACUSE APP CON 126.125 269.125	SYRACUSE TOWER 120.3 239.0	GND CON 121.7 348.6	CLNC DEL 125.05 257.775
------------------------	--	--------------------------------------	-------------------------------	-----------------------------------



ELEV 421	D	TDZE 413
----------	---	----------



CATEGORY	A	B	C	D
RNP 0.15 DA		862/55	449 (500-1)	
RNP 0.30 DA		957-1 3/4	544 (600-1%)	

AUTHORIZATION REQUIRED

NE-2, 09 SEP 2021 to 07 OCT 2021

NE-2, 09 SEP 2021 to 07 OCT 2021