

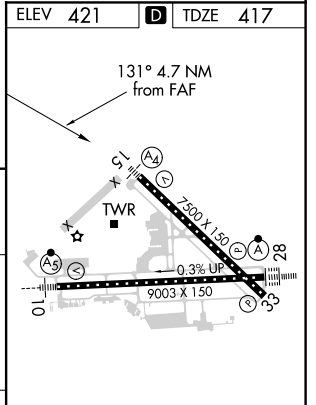
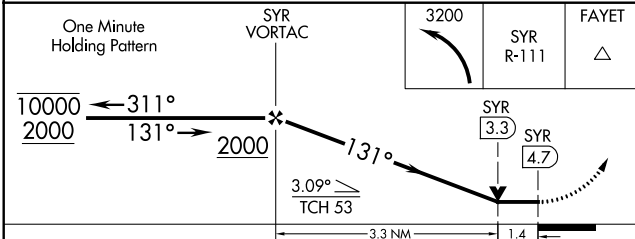
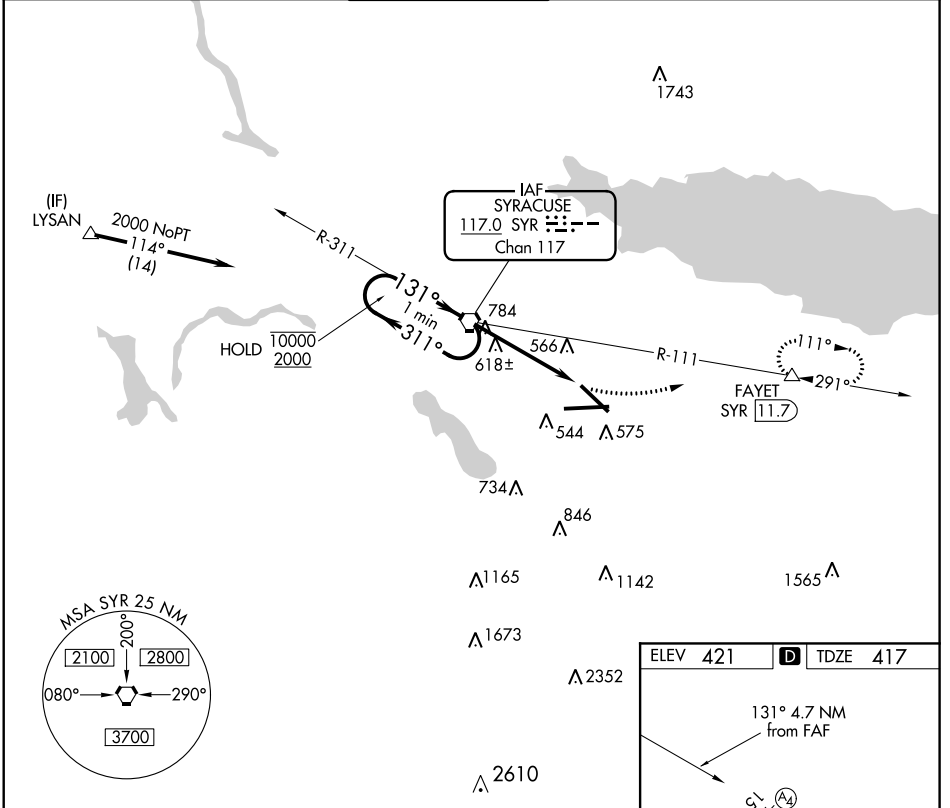
VORTAC SYR 117.0 Chan 117	APP CRS 131°	Rwy ldg TDZE Apt Elev	7500 417 421
---	------------------------	-----------------------------	---

VOR RWY 15

SYRACUSE HANCOCK INTL (SYR)

DME required.	MALS	MISSED APPROACH: Climbing left turn to 3200 on SYR VORTAC R-111 to FAYET/11.7 DME and hold, continue climb-in-hold to 3200.
<p>▼ Rwy 15 helicopter visibility reduction below $\frac{3}{4}$ SM NA.</p> <p>▲ For inop ALS, increase Cat C/D visibility to 1% SM.</p>	A4	

ATIS 124.225	SYRACUSE APP CON 126.125 269.125	SYRACUSE TOWER 120.3 239.0	GND CON 121.7 348.6	CLNC DEL 125.05 257.775
------------------------	--	--------------------------------------	-------------------------------	-----------------------------------



CATEGORY	A	B	C	D
S-15	920- $\frac{3}{4}$	503 (500- $\frac{3}{4}$)	920-1 $\frac{1}{4}$	503 (500-1 $\frac{1}{4}$)
C CIRCLING	920-1	499 (500-1)	1020-1 $\frac{1}{2}$ 599 (600-1 $\frac{1}{2}$)	1180-2 $\frac{1}{2}$ 759 (800-2 $\frac{1}{2}$)

TDZ/CL Rwy 28					
HIRL Rwy 10-28 and 15-33					
FAF to MAP 4.7 NM					
Knots	60	90	120	150	180
Min:Sec	4:42	3:08	2:21	1:53	1:34

NE-2, 09 SEP 2021 to 07 OCT 2021

NE-2, 09 SEP 2021 to 07 OCT 2021