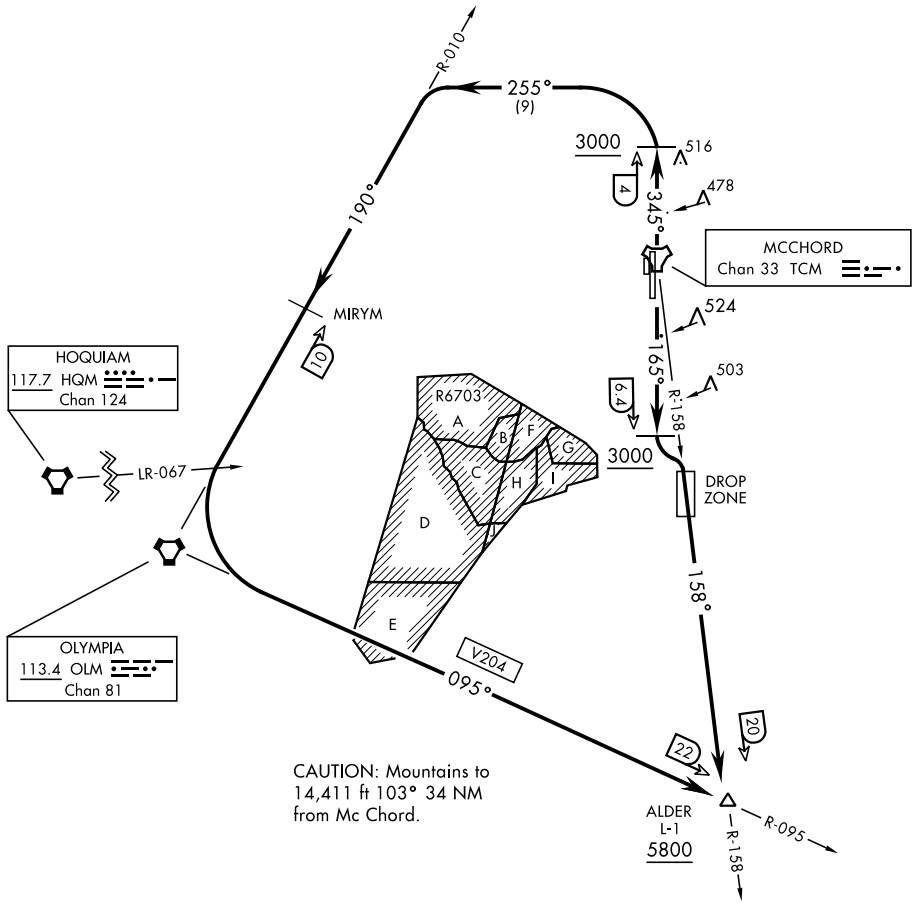


AL-414 [USAF]

ATIS  
 135.825 270.1  
 GND CON  
 118.175 279.65  
 TOWER  
 124.8 259.3  
 SEATTLE DEP CON  
 126.5 377.15

If unable to make ATC charted crossing  
 restrictions advise ATC prior to departure.



CAUTION: Mountains to  
 14,411 ft 103° 34 NM  
 from Mc Chord.

DEPARTURE ROUTE DESCRIPTION

**TAKEOFF RWY 16:** Climb on track 165° to cross TCM TACAN 6.4 DME, at or above 3000. Then turn left to intercept TCM R-158 to cross ALDER at or above 5800.

**TAKEOFF RWY 34:** Climb on track 345° to cross TCM TACAN 4 DME at or above 3000. Then turn left heading 255° to intercept OLM VORTAC R-010 MIRYM then OLM. Then via V204 to cross ALDER at or above 5800.