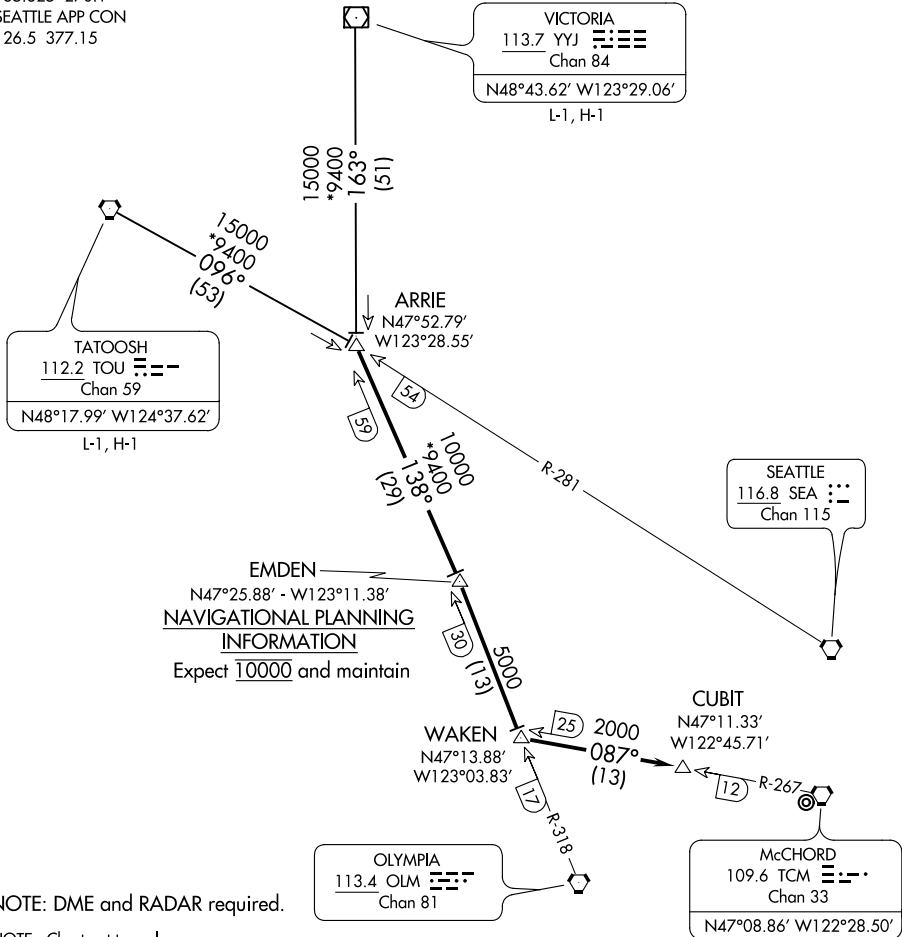


ARRIE SEVEN ARRIVAL

D-ATIS
135.825 270.1
SEATTLE APP CON
126.5 377.15



EMDEN
N47°25.88' - W123°11.38'
NAVIGATIONAL PLANNING INFORMATION
Expect 10000 and maintain

NOTE: DME and RADAR required.

NOTE: Chart not to scale.

ARRIVAL ROUTE DESCRIPTION

TATOOSH TRANSITION (TOU.ARRIE7): From over TOU VORTAC on TOU R-096 to ARRIE. Thence. . .

VICTORIA TRANSITION (YYJ.ARRIE7): From over YYJ VOR/DME on YYJ R-163 to ARRIE. Thence. . .

. . . From over ARRIE on OLM R-318 and TCM R-267 to CUBIT, expect RADAR vectors to final approach course.

LOST COMMUNICATIONS: Proceed direct to TCM VORTAC.

ARRIE SEVEN ARRIVAL

NW-1, 09 SEP 2021 to 07 OCT 2021

NW-1, 09 SEP 2021 to 07 OCT 2021