

# ELLENSBURG THREE ARRIVAL (RNAV)

AL-414 (FAA)

TACOMA, WASHINGTON

NW-1, 09 SEP 2021 to 07 OCT 2021

## ARRIVAL ROUTE DESCRIPTION ELLENSBURG TRANSITION (ELN.ELN3)

**LANDING RUNWAY 16:** From KPOWW on track 275° to cross WAALP between 4700 and 5700, then on heading 330° or as assigned by ATC. Expect RADAR vectors to final approach course.

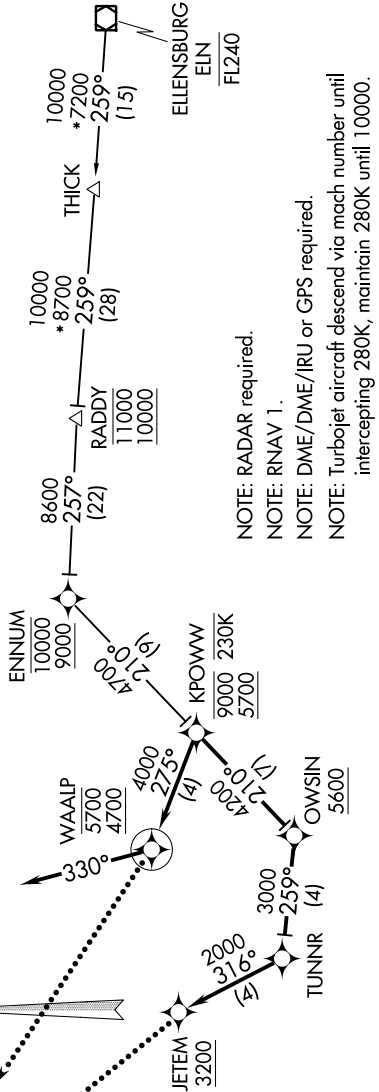
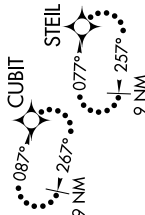
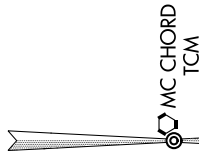
**LANDING RUNWAY 34:** From KPOWW on track 210° to cross OWSIN at or above 5600, then on track 259° to TUNNR, then on track 316° to cross JETEM at/above 3200. Expect ILS or visual approach.

### LOST COMMUNICATIONS

**RUNWAY 16:** At WAALP, proceed direct STEIL and execute approach, if unable hold as published, maintain 4000, squawk appropriate beacon code.

**RUNWAY 34:** At JETEM, execute approach, if unable, proceed direct CUBIT and hold as published, maintain 4000, squawk appropriate beacon code.

- D-ATIS 135.825 270.1
- SEATTLE APP CON 126.5 377.15
- MCCHORD TOWER 124.8 259.3
- GND CON 118.175 279.65



- NOTE: RADAR required.
- NOTE: RNAV 1.
- NOTE: DME/DME/IRU or GPS required.
- NOTE: Turbojet aircraft descend via mach number until intercepting 280K, maintain 280K until 10000.

NOTE: Chart not to scale.

# ELLENSBURG THREE ARRIVAL (RNAV)

NW-1, 09 SEP 2021 to 07 OCT 2021