

TACOMA, WASHINGTON

# ILS or LOC RWY 16

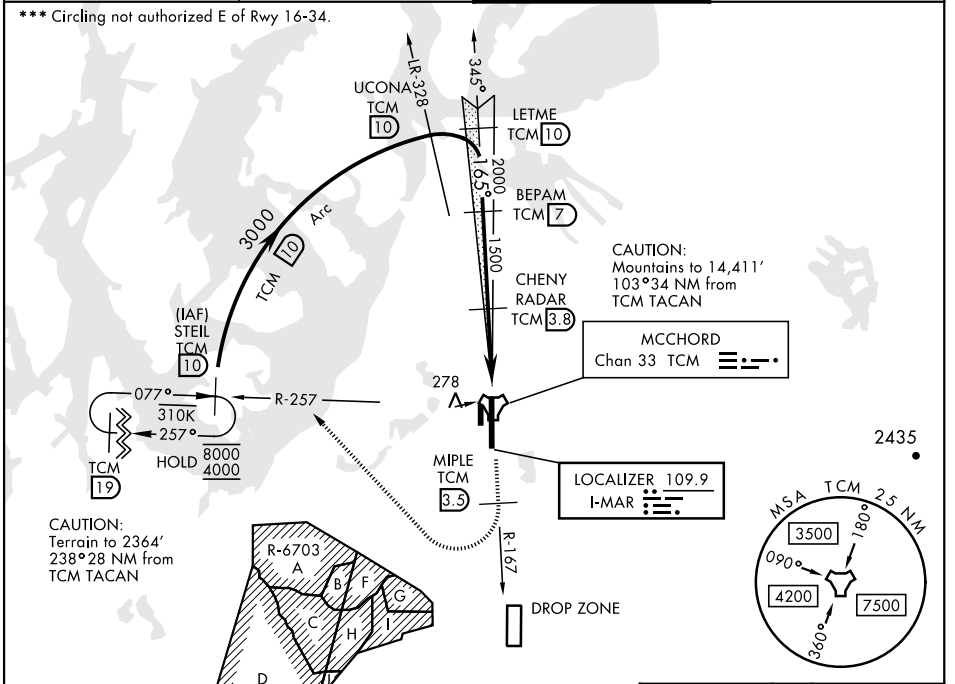
LOC I-MAR <b>109.9</b>	APCH CRS <b>165°</b>	Rwy Idg <b>10,108</b>
		TDZE <b>286</b>
		Arpt Elev <b>322</b>

AL-414 [USAF]

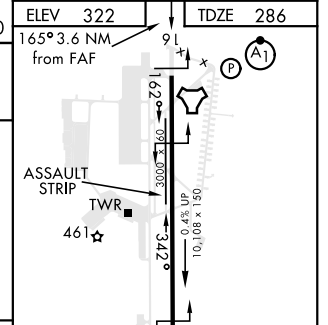
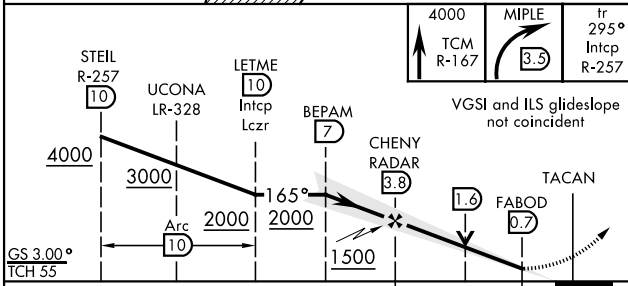
MCCHORD FLD (KTCM)

RADAR or DME required.		<b>MISSED APPROACH:</b> Climb to 4000 on TCM TACAN R-167. At 3.5 DME turn right via 295° course to intercept TCM R-257 to STEIL and hold. Continue climb in hold to 4000.
------------------------	--	---

ATIS <b>135.825 270.1</b>	SEATTLE APP CON <b>126.5 377.15</b>	TOWER <b>124.8 259.3</b>	GND CON <b>118.175 279.65</b>
------------------------------	--	-----------------------------	----------------------------------



EMERG SAFE ALT 100 NM 16,600	ELEV 322	TDZE 286
------------------------------	----------	----------



CATEGORY	A	B	C	D	E
S-ILS 16*	601/40		315	(300-¾)	
S-LOC 16**	860/40	574 (600-¾)	860-1¼	574	(600-1¼)
CIRCLING ***	940-1	618 (700-1)	940-1¾ 618 (700-1¾)	940-2 618 (700-2)	1020-2½ 698 (700-2½)

FAF to MAP 3.1 NM					
Knots	60	90	120	150	180
Min:Sec	3:06	2:04	1:33	1:14	1:02

TACOMA, WASHINGTON

47°08'N-122°29'W

MCCHORD FLD (KTCM)

Amtd 4 09SEP21

# ILS or LOC RWY 16

NW-1, 09 SEP 2021 to 07 OCT 2021

NW-1, 09 SEP 2021 to 07 OCT 2021