

TACOMA, WASHINGTON

ILS or LOC RWY 34

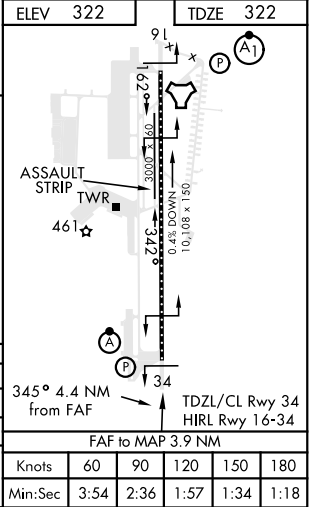
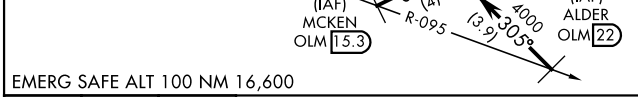
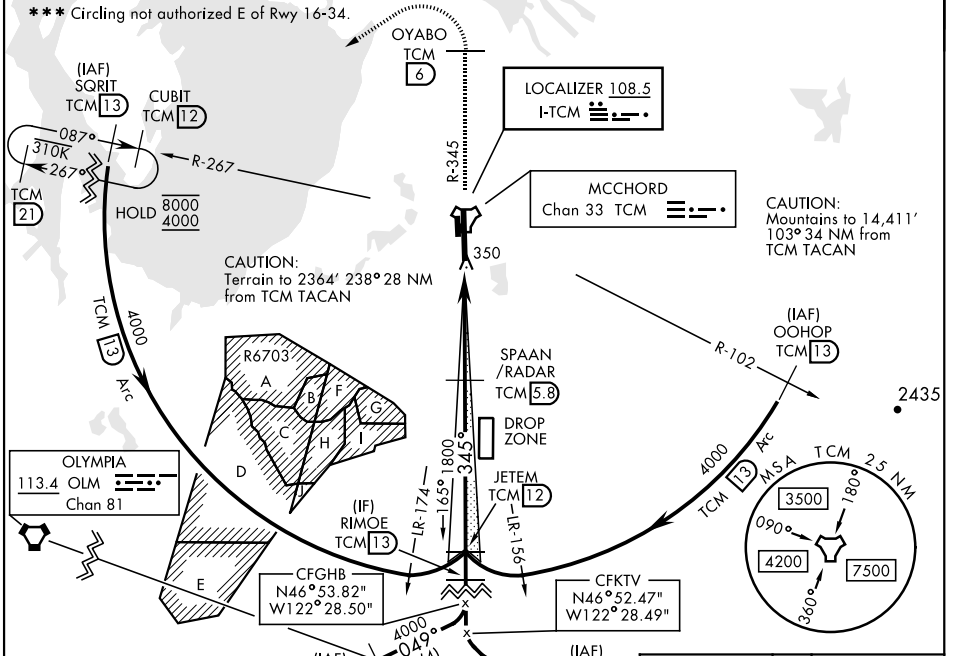
LOC I-TCM 108.5	APCH CRS 345°	Rwy Idg 10,108 TDZE 322 Arprt Elev 322	AL-414 [USAF]	MCCHORD FLD (KTCCM)
----------------------------------	--------------------------------	---	---------------	---------------------

RADAR or DME required.

ALSF-2

MISSED APPROACH: Climb to 4000 on TCM TACAN R-345 to OYABO, then turn left via 215° course to intercept TCM R-267 to CUBIT and hold, continue climb in hold to 4000. Cross OYABO at or above 3000.

ATIS 135.825 270.1	SEATTLE APP CON 126.5 377.15	TOWER 124.8 259.3	GND CON 118.175 279.65
-------------------------------------	---	------------------------------------	---



CATEGORY	A	B	C	D
S-ILS 34 *	522/18	200	(200-½)	
S-LOC 34 **	820/24	498 (500-½)	820/50	498 (500-1)
CIRCLING ***	940-1	618 (700-1)	940-1 ¼ 618 (700-1 ¼)	940-2 618 (700-2)

TACOMA, WASHINGTON 47°08'N-122°29'W MCCHORD FLD (KTCCM)

ILS or LOC RWY 34

NW-1, 09 SEP 2021 to 07 OCT 2021

NW-1, 09 SEP 2021 to 07 OCT 2021