

RNAV (GPS) RWY 34

APCH CRS	Rwy ldg	10,108
345°	TDZE	322
	Arprt Elev	322

AL-414 [USAF]

MCCHORD FLD (KTCM)

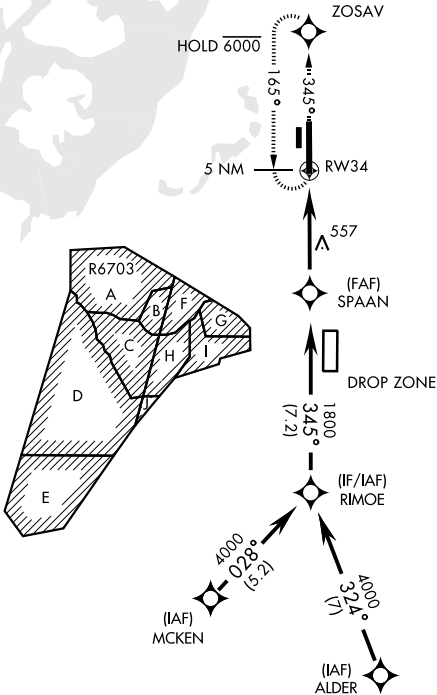
RADAR required.
 * When ALS inop, increase CAT AB RVR to 55, vis to 1 mile; CAT CDE vis to 1 3/8 miles.



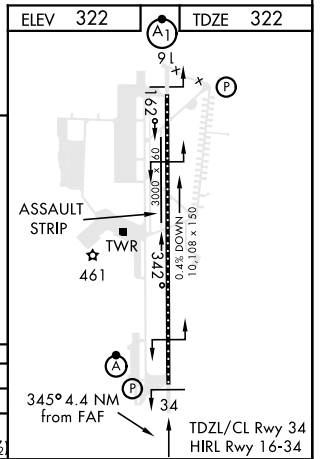
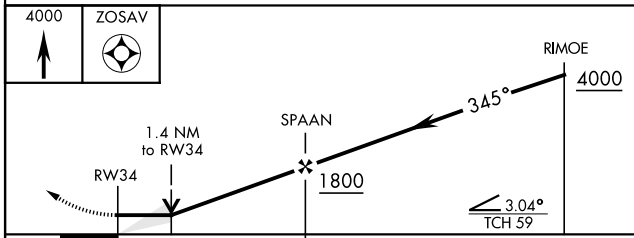
MISSED APPROACH: Climb to 4000 direct ZOSAV and hold, continue climb in hold to 4000.

ATIS 135.825 270.1	SEATTLE APP CON 126.5 377.15	TOWER 124.8 259.3	GND CON 118.175 279.65
------------------------------	--	-----------------------------	----------------------------------

DME/DME RNP-0.3 NA
 ** Circling not authorized E of rwy 16-34.



EMERG SAFE ALT 100 NM 16,600



CATEGORY	A	B	C	D	E
LNAV MDA *	820/24	498 (500-1/2)	820/50		
CIRCLING **	940-1	618 (700-1)	940-1 3/4 618 (700-1 3/4)	940-2 618 (700-2)	1020-2 1/2 698 (700-2 1/2)

RNAV (GPS) RWY 34

NW-1, 09 SEP 2021 to 07 OCT 2021

NW-1, 09 SEP 2021 to 07 OCT 2021