

# TACAN RWY 16

TACAN TCM Chan <b>33</b>	APCH CRS <b>160°</b>	Rwy ldg <b>10,108</b> TDZE <b>286</b> Arpt Elev <b>322</b>
--------------------------	----------------------	--

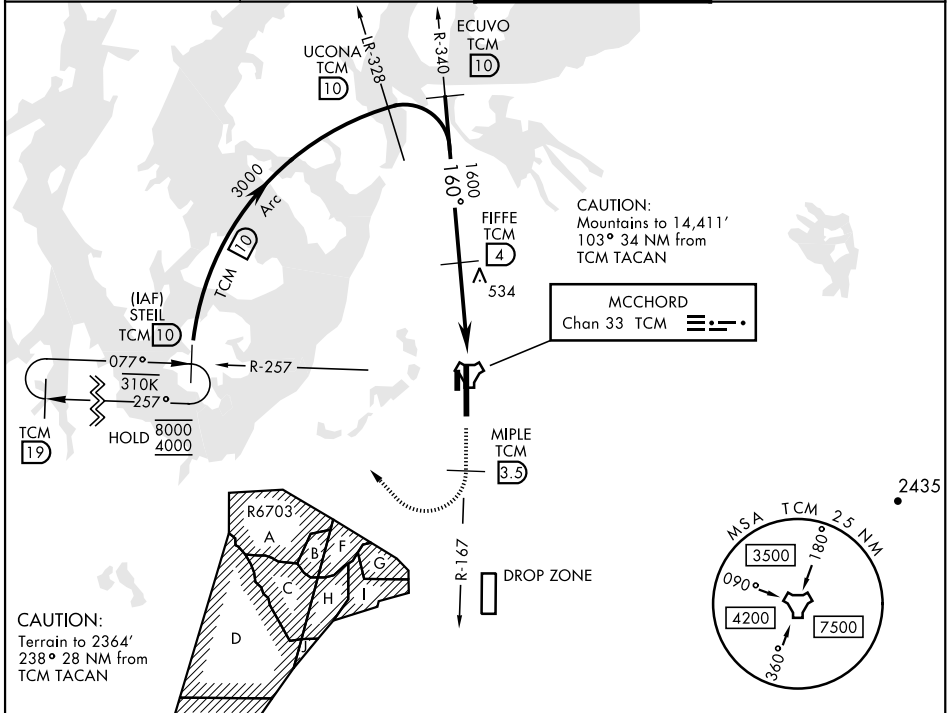
AL-414 [USAF]

MCCHORD FLD (KTCM)

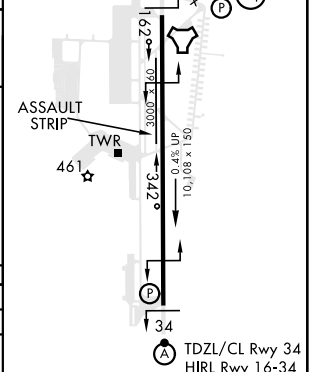
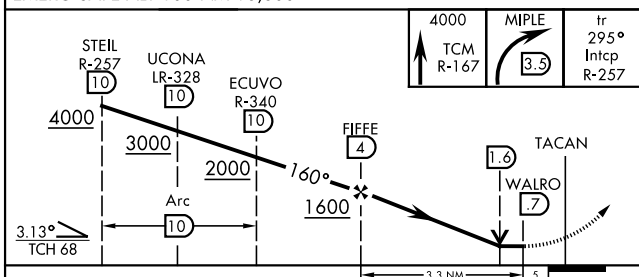
**▽** \* When ALS inop, increase CAT AB RVR to 55, vis to 1 mile, CAT CDE vis to 1 3/8 miles.  
\*\* Circling not authorized E of Rwy 16-34.

**ALS F-1** MISSED APPROACH: Climb to 4000 on TCM TACAN R-167. At TCM 3.5 DME turn right via 295° course to intercept TCM R-257 to STEIL and hold, continue climb in hold to 4000.

ATIS <b>135.825 270.1</b>	SEATTLE APP CON <b>126.5 377.15</b>	TOWER <b>124.8 259.3</b>	GND CON <b>118.175 279.65</b>
------------------------------	--	-----------------------------	----------------------------------



ELEV 322	TDZE 286
160° 3.8 NM from FAF	<b>A1</b>



CATEGORY	A	B	C	D	E
S-16 *	800/24	514 (500-1/2)	800/55	514	(500-1)
CIRCLING **	940-1 618 (700-1)		940-1 3/4 618 (700-1 3/4)	940-2 618 (700-2)	1020-2 1/2 698 (700-2 1/2)

# TACAN RWY 16

NW-1, 09 SEP 2021 to 07 OCT 2021

NW-1, 09 SEP 2021 to 07 OCT 2021