


TACAN RWY 34

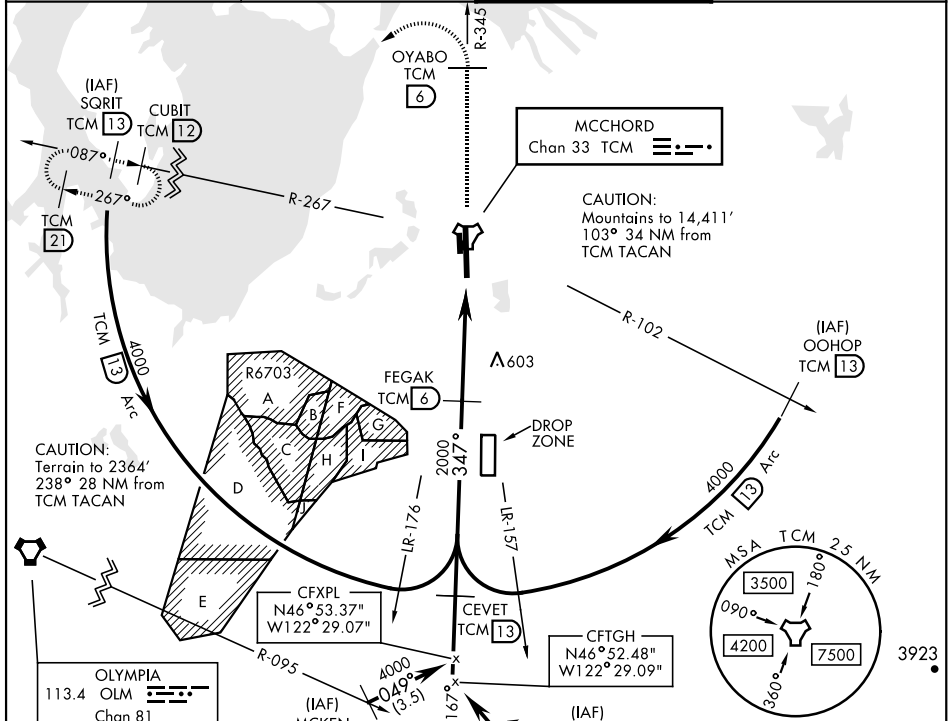
TACAN TCM Chan 33	APCH CRS 347°	Rwy Idg 10,108 TDZE 322 Arpt Elev 322	AL-414 [USAF]	MCCHORD FLD (KTCM)
--------------------------	----------------------	--	---------------	--------------------

▲ * When ALS inop, increase CAT AB RVR to 55, vis to 1 mile, CAT CD vis to 1½ miles.
****** Circling not authorized E of Rwy 16-34.

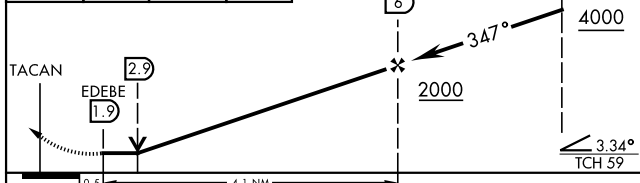
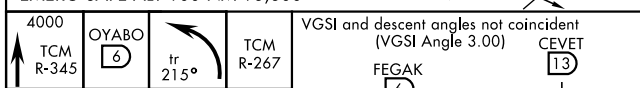
ALSF-2 

MISSED APPROACH: Climb to 4000 on TCM TACAN R-345 to OYABO, then turn left via 215° course to intercept TCM R-267 to CUBIT and hold. Cross OYABO at or above 3000. Continue climb in hold to 4000.

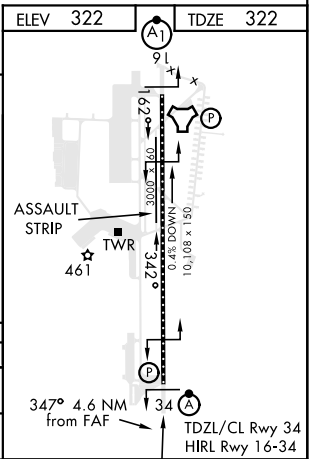
ATIS 135.825 270.1	SEATTLE APP CON 126.5 377.15	TOWER 124.8 259.3	GND CON 118.175 279.65
------------------------------	--	-----------------------------	----------------------------------



ELEV 322	TDZE 322
EMERG SAFE ALT 100 NM 16,600	



CATEGORY	A	B	C	D
S-34 *	860/24 538 (600-½)		860/55 538 (600-1)	
CIRCLING **	940-1 618 (700-1)		940-1½ 618 (700-1½)	940-2 618 (700-2)



TACAN RWY 34

NW-1, 09 SEP 2021 to 07 OCT 2021

NW-1, 09 SEP 2021 to 07 OCT 2021