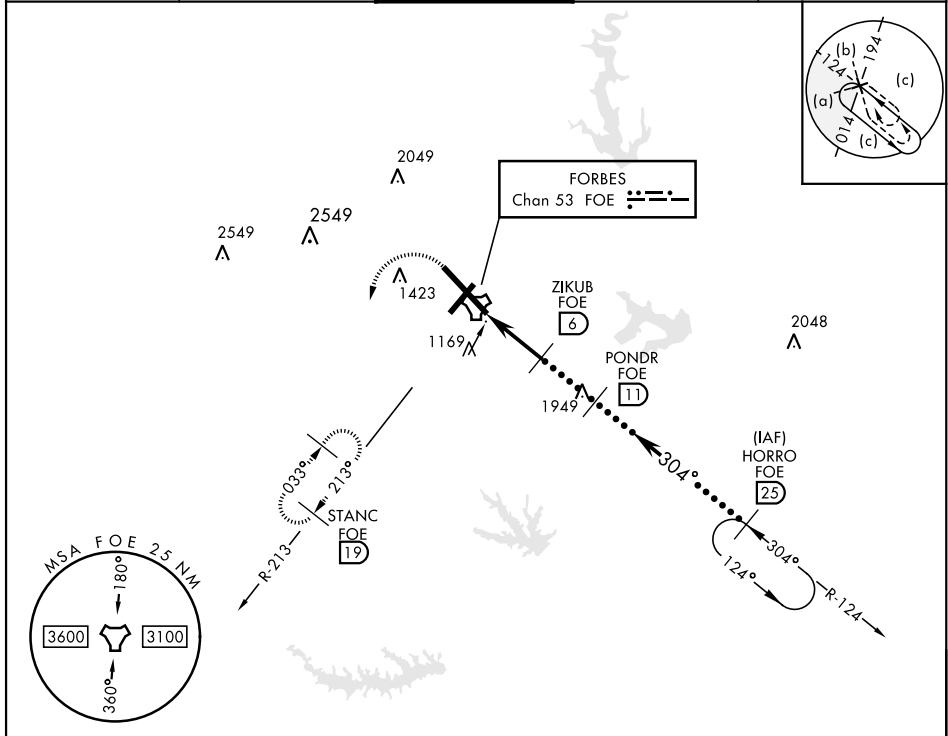


TOPEKA, KANSAS

# HI-TACAN RWY 31

TACAN FOE Chan <b>53</b>	APCH CRS <b>304°</b>	Rwy Idg <b>12,803</b> TDZE <b>1037</b> Arprt Elev <b>1078</b>	JAL-424 [USAF]	TOPEKA RGNL (KFOE)
<b>▽</b> * For ALS inop, increase CAT CDE vis to 1 3/8.			<b>MALSR</b> 	<b>MISSED APPROACH:</b> Climbing left turn to 3000 via heading 190° and FOE TACAN R-213 to STANC/19° DME and hold.

ATIS <b>128.25</b>	KANSAS CITY CENTER <b>123.8 343.7</b>	FORBES TOWER ★ <b>120.8 (CTAF) 340.2</b>	GND CON <b>118.425 275.8</b>	UNICOM <b>122.95</b>
-----------------------	--	---	---------------------------------	-------------------------



NC-2, 09 SEP 2021 to 07 OCT 2021

NC-2, 09 SEP 2021 to 07 OCT 2021

EMERG SAFE ALT 100 NM 3600

3000 FOE R-213 STANC FOE 19 HORRO R-124 25 FL 250 10,000		ELEV 1078	TDZE 1037
TACAN BUMKE 8 ZIKUB 6 POND 11 TCH 58 2.90°			
CATEGORY	C	D	E
S-31 *	1520/50	483 (500-1)	
CIRCLING	1580-1 1/2 502 (600-1 1/2)	1700-2 622 (700-2)	1720-2 1/4 642 (700-2 1/4)

TOPEKA, KANSAS  
Amdt 3A 08DEC16

38° 57' N-95° 40' W

TOPEKA RGNL (KFOE)

# HI-TACAN RWY 31