

TACAN FOE Chan 53 (111.6)	APP CRS 138°	Rwy Idg 12803 TDZE 1066 Apt Elev 1078
---	------------------------	--

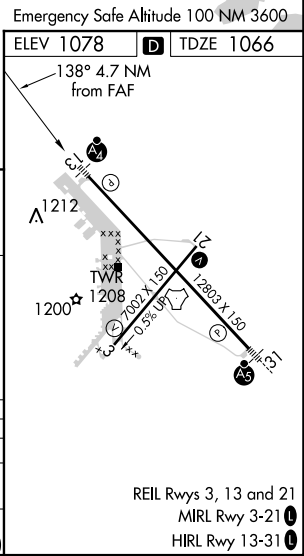
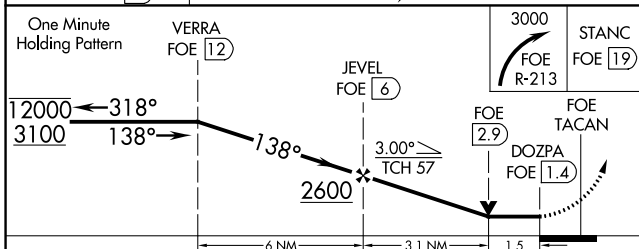
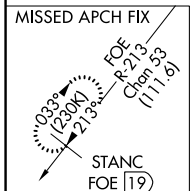
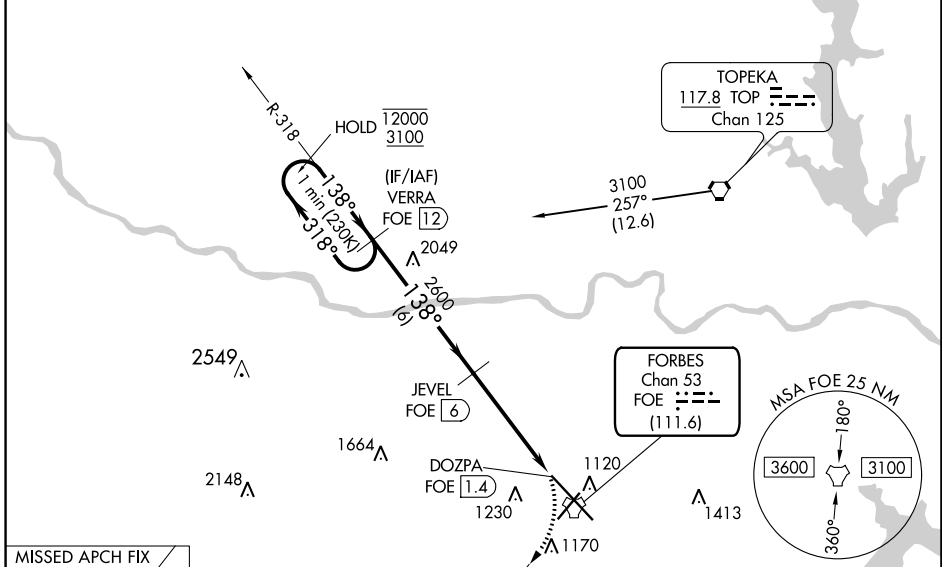
TACAN RWY 13

TOPEKA RGNL (F'OE)

NA	MALSF 	MISSED APPROACH: Climbing right turn to 3000 on FOE TACAN R-213 to STANC/FOE 19 DME and hold.
----	-----------	---

ATIS 128.25	KANSAS CITY CENTER 123.8 343.7	FORBES TOWER* 120.8 (CTAF) 340.2	GND CON 118,425 275.8	UNICOM 122.95
-----------------------	--	--	---------------------------------	-------------------------

NOT FOR CIVIL USE



CATEGORY	A	B	C	D	E
S-13	1600-1	534 (600-1)	1600-1½	534 (600-1½)	
CIRCLING	1600-1	522 (600-1)	1600-1½	1700-2	1720-2¼
			522 (600-1½)	622 (700-2)	642 (700-2¼)

NC-2, 09 SEP 2021 to 07 OCT 2021

NC-2, 09 SEP 2021 to 07 OCT 2021