

TACAN FOE Chan <b>53</b> <b>(111.6)</b>	APP CRS <b>304°</b>	Rwy Idg <b>12803</b> TDZE <b>1037</b> Apt Elev <b>1078</b>
---	------------------------	--

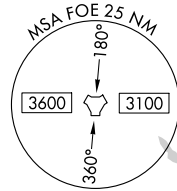
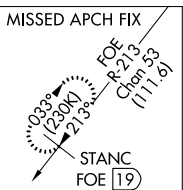
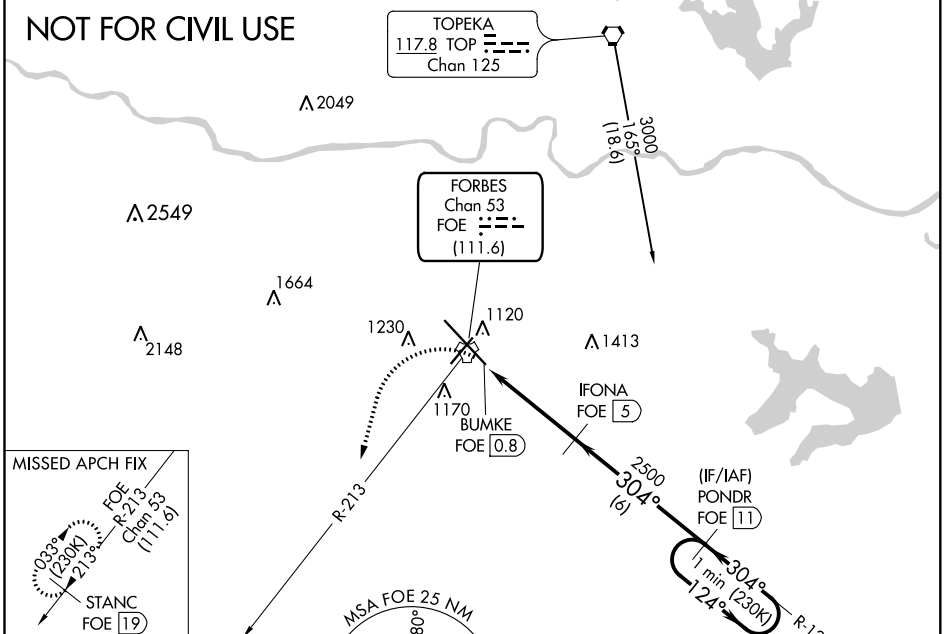
# TACAN RWY 31

TOPEKA RGNL (F/OE)

<b>NA</b> For inoperative ALS, increase S-31 Cats C/D/E visibility to 1 3/8 SM.	<b>MALSR</b>	<b>MISSED APPROACH:</b> Climbing left turn to 3000 heading 190° and on FOE TACAN R-213 to STANC/19 DME and hold.
--	--------------	--

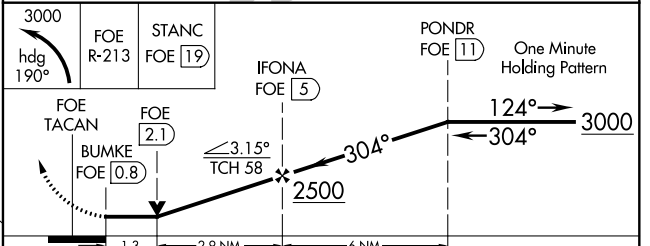
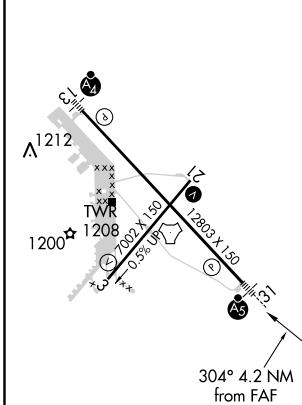
<b>ATIS</b> <b>128.25</b>	<b>KANSAS CITY CENTER</b> <b>123.8 343.7</b>	<b>FORBES TOWER*</b> <b>120.8 (CTAF) 340.2</b>	<b>GND CON</b> <b>118.425 275.8</b>	<b>UNICOM</b> <b>122.95</b>
------------------------------	---	---	--	--------------------------------

**NOT FOR CIVIL USE**



Emergency Safe Altitude 100 NM 3600

ELEV 1078	<b>D</b>	TDZE 1037
-----------	----------	-----------



CATEGORY	A	B	C	D	E
S-31	1500/24	463 (500-1/2)	1500/50	463 (500-1)	
<b>C</b> CIRCLING	1520-1 442 (500-1)	1580-1 502 (600-1)	1580-1 1/2 502 (600-1/2)	1700-2 622 (700-2)	1720-2 1/4 642 (700-2 1/4)

NC-2, 09 SEP 2021 to 07 OCT 2021

NC-2, 09 SEP 2021 to 07 OCT 2021