

HI-TACAN Z RWY 18L

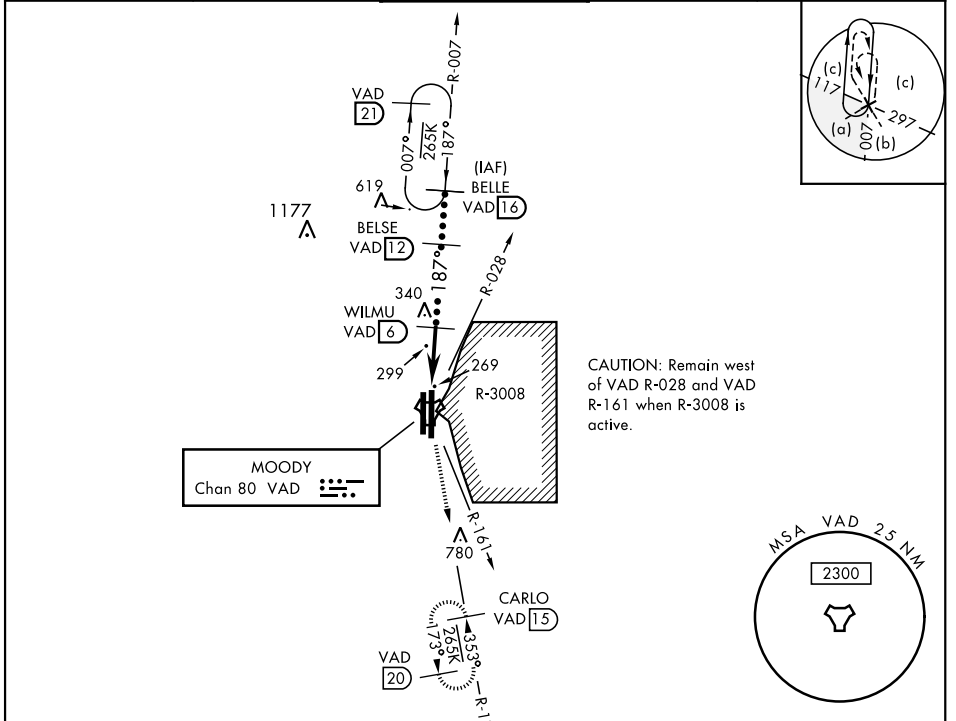
TACAN VAD Chan 80	APCH CRS 187°	Rwy Idg TDZE Arprt Elev 9300 233 233	JAL-435 [USAF]	MOODY AFB (KVAD)
-----------------------------	-------------------------	--	----------------	------------------

*When ALS inop, increase vis to 1 3/8 miles.

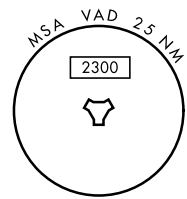
ALSF-1 

MISSED APPROACH: Climb and maintain 3000 via VAD R-173 to CARLO and hold.

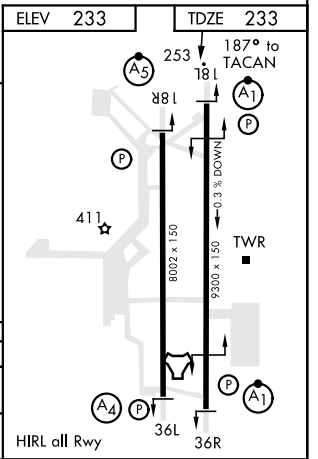
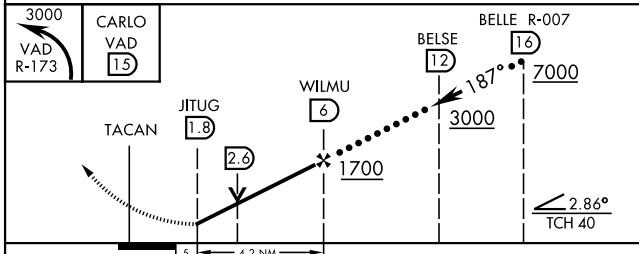
ATIS ★ 273.5	VALDOSTA APP CON 126.6 285.6	MOODY TOWER ★ 128.45 (CTAF) 257.625	GND CON 138.95 275.8	CLNC DEL 120.625 296.7
------------------------	--	---	--------------------------------	----------------------------------



CAUTION: Remain west of VAD R-028 and VAD R-161 when R-3008 is active.



EMERG SAFE ALT 100 NM 3300



CATEGORY	C	D	E
S-18L*	700/50	467 (500-1)	
CIRCLING	760-1 1/2 527 (600-1 1/2)	800-2 567 (600-2)	1060-3 827 (900-3)

HI-TACAN Z RWY 18L

SE-4, 09 SEP 2021 to 07 OCT 2021

SE-4, 09 SEP 2021 to 07 OCT 2021