

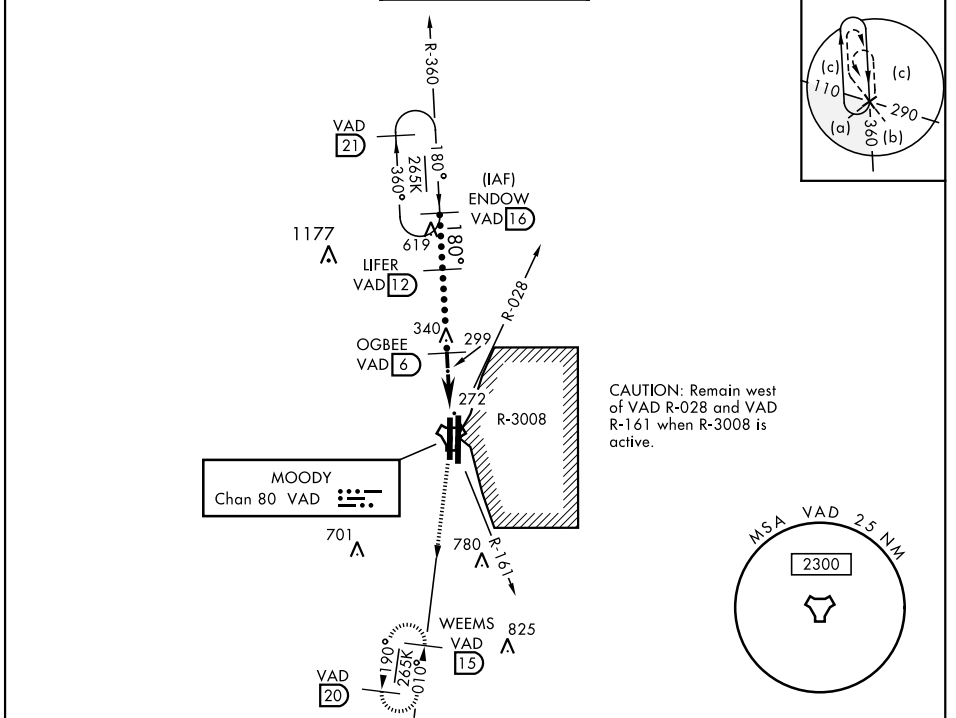
# HI-TACAN Z RWY 18R

TACAN VAD Chan <b>80</b>	APCH CRS <b>180°</b>	Rwy Idg TDZE Arprt Elev <b>8002</b> <b>231</b> <b>233</b>	JAL-435 [USAF]	MOODY AFB (KVAD)
-----------------------------	-------------------------	--	----------------	------------------

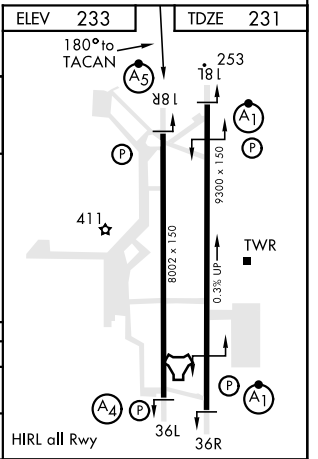
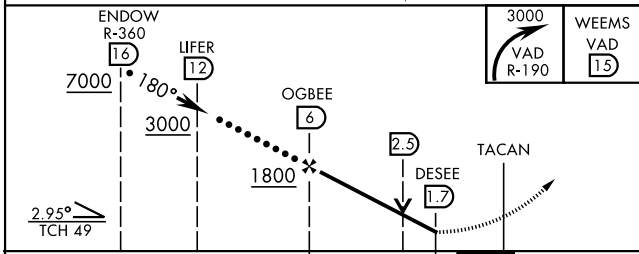
\* When ALS inop, increase vis to 1 3/8 miles.

MALSR (A5) MISSED APPROACH: Climb and maintain 3000 via VAD R-190 to WEEMS and hold.

ATIS ★ <b>273.5</b>	VALDOSTA APP CON <b>126.6 285.6</b>	MOODY TOWER ★ <b>128.45 (CTAF) 257.625</b>	GND CON <b>138.95 275.8</b>	CLNC DEL <b>120.625 296.7</b>
------------------------	--	---	--------------------------------	----------------------------------



ELEV 233	TDZE 231
----------	----------



CATEGORY	C	D	E
S-18R *	700/50	469 (500-1)	
CIRCLING	760-1 1/2 527 (600-1 1/2)	800-2 567 (600-2)	1060-3 827 (900-3)

# HI-TACAN Z RWY 18R

SE-4, 09 SEP 2021 to 07 OCT 2021

SE-4, 09 SEP 2021 to 07 OCT 2021