

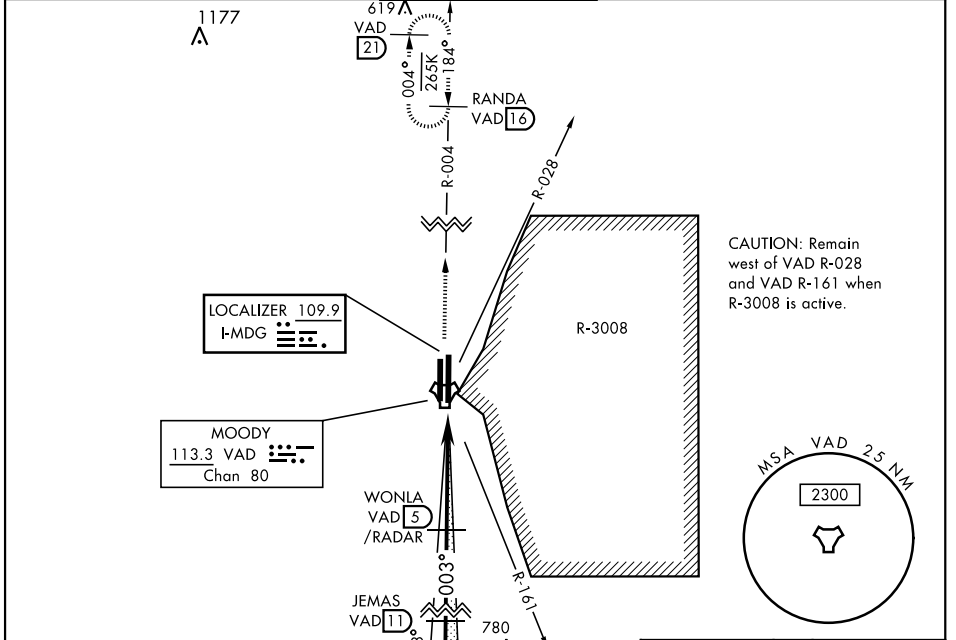
ILS or LOC Y RWY 36R

LOC I-MDG 109.9	APCH CRS 003°	Rwy Idg TDZE Arpt Elev 9300 217 233	AL-435 [USAF]	MOODY AFB (KVAD)
---------------------------	-------------------------	---	---------------	------------------

* When ALS inop, increase RVR to 40 and vis to ¾ mile.
 ** When ALS inop, increase RVR CAT AB to 55 and vis to 1 mile, RVR CAT CDE vis to 1¾ miles.

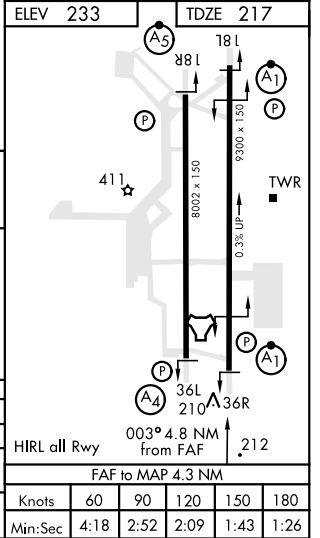
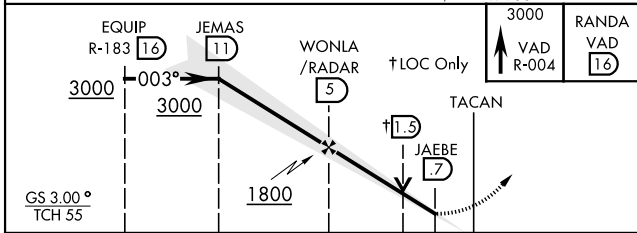
MISSED APPROACH: Climb and maintain 3000 via VAD R-004 to RANDA and hold.

ATIS ★ 273.5	VALDOSTA APP CON 126.6 285.6	MOODY TOWER ★ 128.45 (CTAF) 257.625	GND CON 138.95 275.8	CLNC DEL 120.625 296.7
------------------------	--	---	--------------------------------	----------------------------------



CAUTION: Remain west of VAD R-028 and VAD R-161 when R-3008 is active.

RADAR or DME REQUIRED
EMERG SAFE ALT 100 NM 3300



CATEGORY	A	B	C	D	E
S-ILS 36R*	417/24		200	(200-½)	
S-LOC 36R**	680/24	463 (500-½)	680/50	463 (500-1)	
CIRCLING	760-1	527 (600-1)	760-1½	800-2	1060-3
			527 (600-½)	567 (600-2)	827 (900-3)

HIRL all Rwy					
003° 4.8 NM from FAF					
FAF to MAP 4.3 NM					
Knots	60	90	120	150	180
Min:Sec	4:18	2:52	2:09	1:43	1:26

ILS or LOC Y RWY 36R

SE-4, 09 SEP 2021 to 07 OCT 2021

SE-4, 09 SEP 2021 to 07 OCT 2021