

VALDOSTA, GEORGIA

# RNAV (GPS) RWY 36R

APCH CRS 003°	Rwy Idg TDZE Arprt Elev	9300 217 233
------------------	-------------------------------	--------------------

AL-435 (USAF)

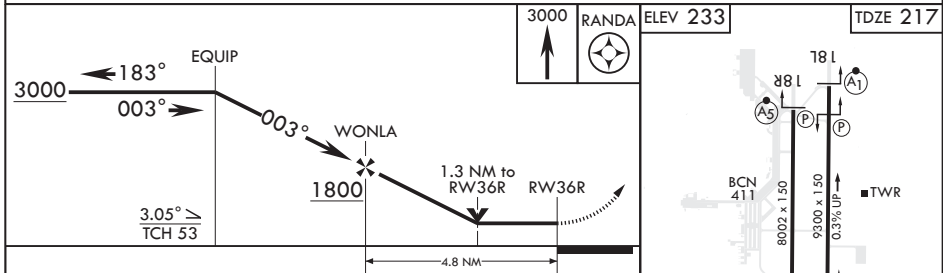
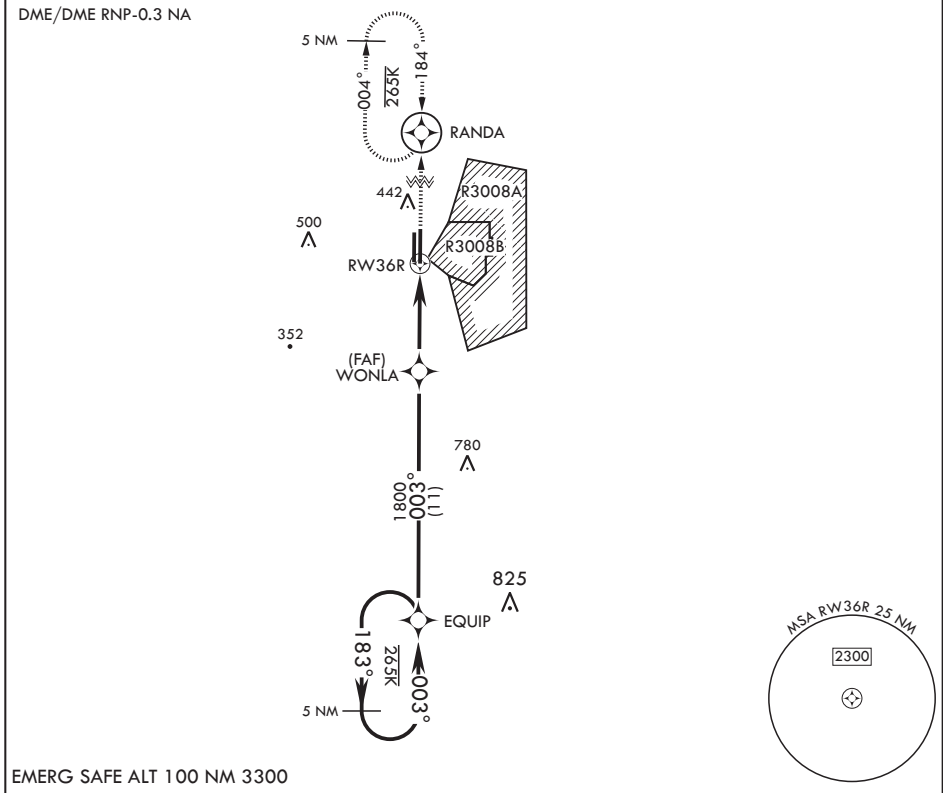
MOODY AFB (KVAD)

**V** \* When ALS inop, increase CAT AB RVR to 55 and vis to 1 mile, CAT CDE vis to 1 3/8 miles.

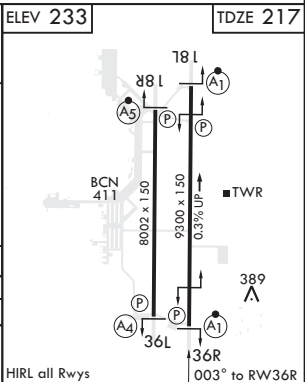
ALSF-1 

MISSED APPROACH: Climb to 3000 direct to RANDA and hold.

ATIS* 273.5	VALDOSTA APP CON 126.6 285.6	TOWER* 128.45 (CTAF) 257.625	GND CON 138.95 275.8	CLNC DEL 120.625 296.7
----------------	---------------------------------	---------------------------------	-------------------------	---------------------------



CATEGORY	A	B	C	D	E
LNAV MDA*	680/24	463 (500-1/2)	680/50	463	(500-1)
<b>C</b> CIRCLING	760-1	527 (600-1)	760-1 1/2 527 (600-1 1/2)	800-2 567 (600-2)	1060-3 827 (900-3)



VALDOSTA, GEORGIA  
Amdt 1 10OCT19

30°58'N - 83°12'W

MOODY AFB (KVAD)

# RNAV (GPS) RWY 36R

SE-4, 09 SEP 2021 to 07 OCT 2021

SE-4, 09 SEP 2021 to 07 OCT 2021