

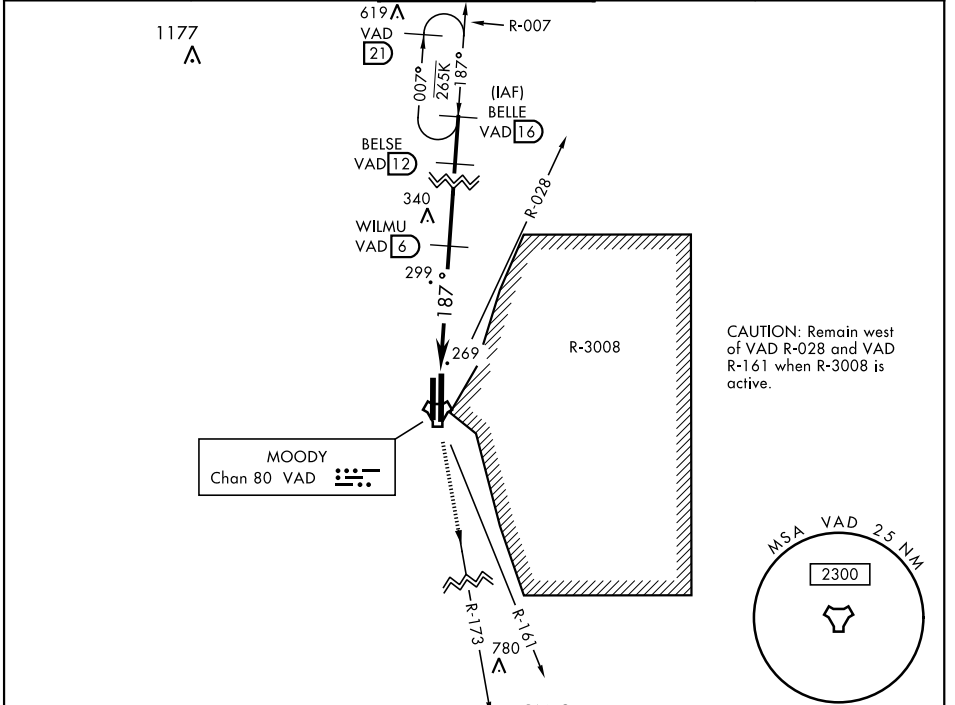
# TACAN Y RWY 18L

TACAN VAD Chan <b>80</b>	APCH CRS <b>187°</b>	Rwy Idg <b>9300</b> TDZE <b>233</b> Arprt Elev <b>233</b>	AL-435 [USAF]	MOODY AFB (KVAD)
-----------------------------	-------------------------	---	---------------	------------------

V \*When ALS inop, increase CAT AB RVR to 55 and vis to 1 mile, CAT CDE vis to 1 3/8 miles.
 
A1 ALSF-1
 

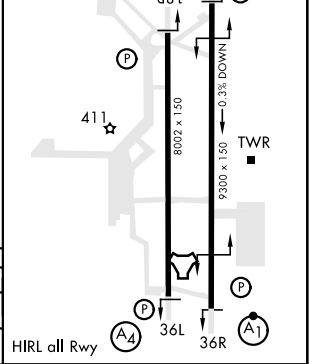
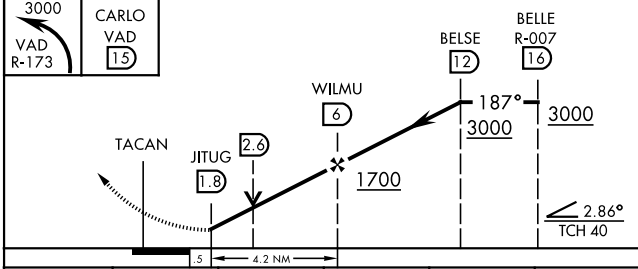
 MISSED APPROACH: Climb and maintain 3000 via VAD R-173 to CARLO and hold.

ATIS ★ <b>273.5</b>	VALDOSTA APP CON <b>126.6 285.6</b>	MOODY TOWER ★ <b>128.45 (CTAF) 257.625</b>	GND CON <b>138.95 275.8</b>	CLNC DEL <b>120.625 296.7</b>
------------------------	--	---	--------------------------------	----------------------------------



ELEV 233	TDZE 233
----------	----------

EMERG SAFE ALT 100 NM 3300



CATEGORY	A	B	C	D	E
S-18L *	700/24	467 (500-1/2)	700/50	467 (500-1)	
CIRCLING	760-1	527 (600-1)	760-1 1/2	527 (600-1 1/2)	800-2 567 (600-2)
					1060-3 827 (900-3)

# TACAN Y RWY 18L

SE-4, 09 SEP 2021 to 07 OCT 2021

SE-4, 09 SEP 2021 to 07 OCT 2021