


# TACAN Y RWY 18R

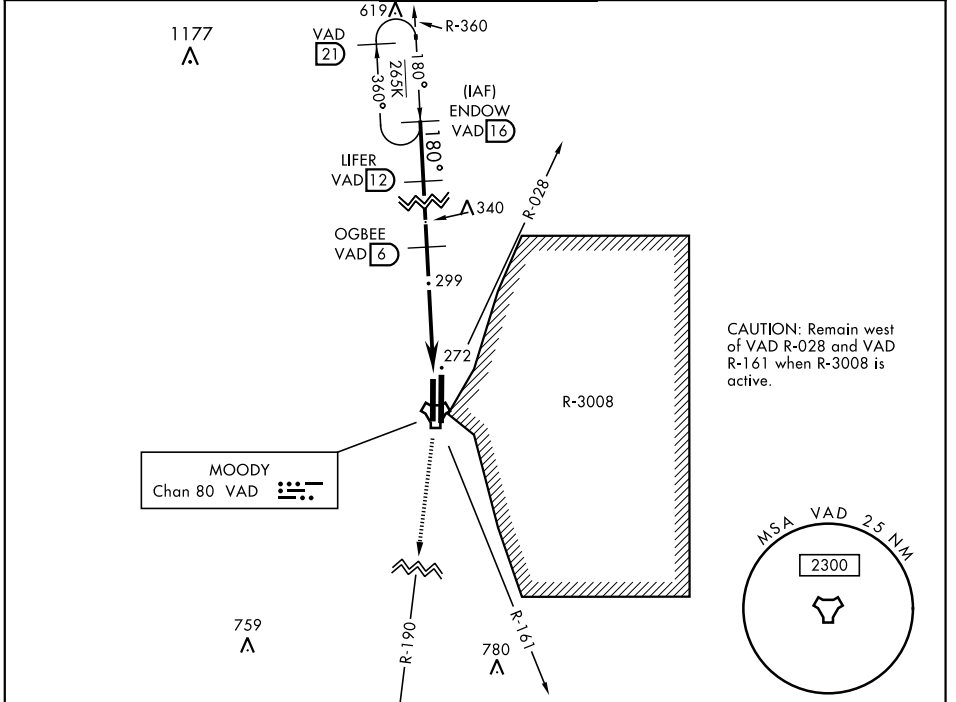
TACAN VAD Chan <b>80</b>	APCH CRS <b>180°</b>	Rwy Ldg TDZE Arprt Elev <b>800Z</b> <b>231</b> <b>233</b>	AL-435 [USAF]	MOODY AFB (KVAD)
-----------------------------	-------------------------	--	---------------	------------------

**▼** \* When ALS inop, increase CAT AB RVR to 55 and vis to 1 mile, CAT CDE vis to 1 1/2 miles.

MALSR 

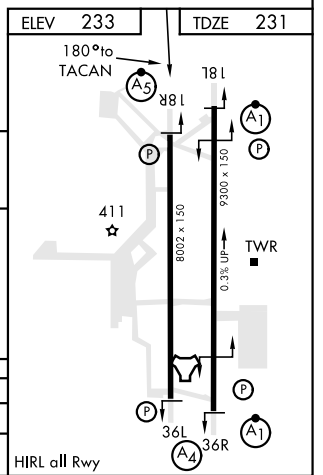
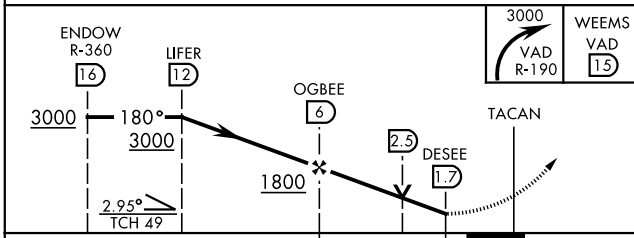
MISSED APPROACH: Climb and maintain 3000 via VAD R-190 to WEEMS and hold.


ATIS ★ <b>273.5</b>	VALDOSTA APP CON <b>126.6 285.6</b>	MOODY TOWER ★ <b>128.45 (CTAF) 257.625</b>	GND CON <b>138.95 275.8</b>	CLNC DEL <b>120.625 296.7</b>
------------------------	--	---	--------------------------------	----------------------------------



SE-4, 09 SEP 2021 to 07 OCT 2021

SE-4, 09 SEP 2021 to 07 OCT 2021



CATEGORY	A	B	C	D	E
S-18R *	700/50		469	(500-1)	
 CIRCLING	760-1	527 (600-1)	760-1 1/2 527 (600-1 1/2)	800-2 567 (600-2)	1060-3 827 (900-3)

# TACAN Y RWY 18R