

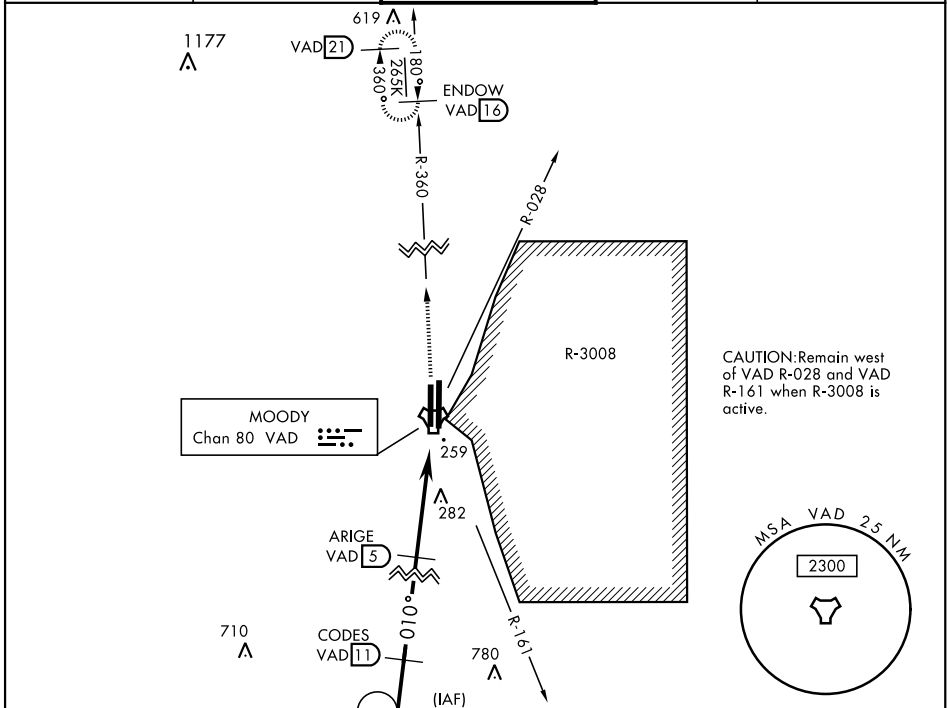
TACAN Y RWY 36L

TACAN VAD Chan 80	APCH CRS 010°	Rwy Idg TDZE Arprt Elev 8002 225 233	AL-435 [USAF]	MOODY AFB (KVAD)
-----------------------------	-------------------------	--	---------------	------------------

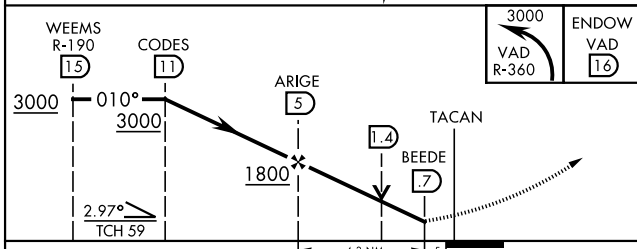
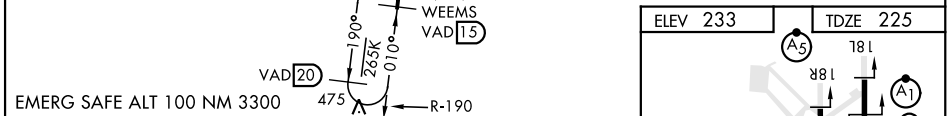
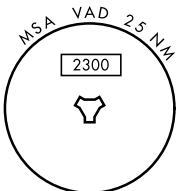
▽ * When ALS inop, increase CAT AB RVR to 55 and vis to 1 mile, CAT CDE vis to 1 3/8 miles.

 MISSED APPROACH: Climb and maintain 3000 via VAD R-360 to ENDOW and hold.

ATIS ★ 273.5	VALDOSTA APP CON 126.6 285.6	MOODY TOWER ★ 128.45 (CTAF) 257.625	GND CON 138.95 275.8	CLNC DEL 120.625 296.7
------------------------	--	---	--------------------------------	----------------------------------



CAUTION: Remain west of VAD R-028 and VAD R-161 when R-3008 is active.



CATEGORY	A	B	C	D	E
S-36L*	680/40	455 (500-3/4)	680/55	455 (500-1)	
CIRCLING	760-1	527 (600-1)	760-1 1/2 527 (600-1 1/2)	800-2 567 (600-2)	1060-3 827 (900-3)

TACAN Y RWY 36L

SE-4, 09 SEP 2021 to 07 OCT 2021

SE-4, 09 SEP 2021 to 07 OCT 2021