

WAAS CH <b>53511</b> <b>W12A</b>	APP CRS <b>118°</b>	Rwy ldg TDZE Apt Elev	<b>7314</b> <b>23</b> <b>24</b>
--	------------------------	-----------------------------	---------------------------------------

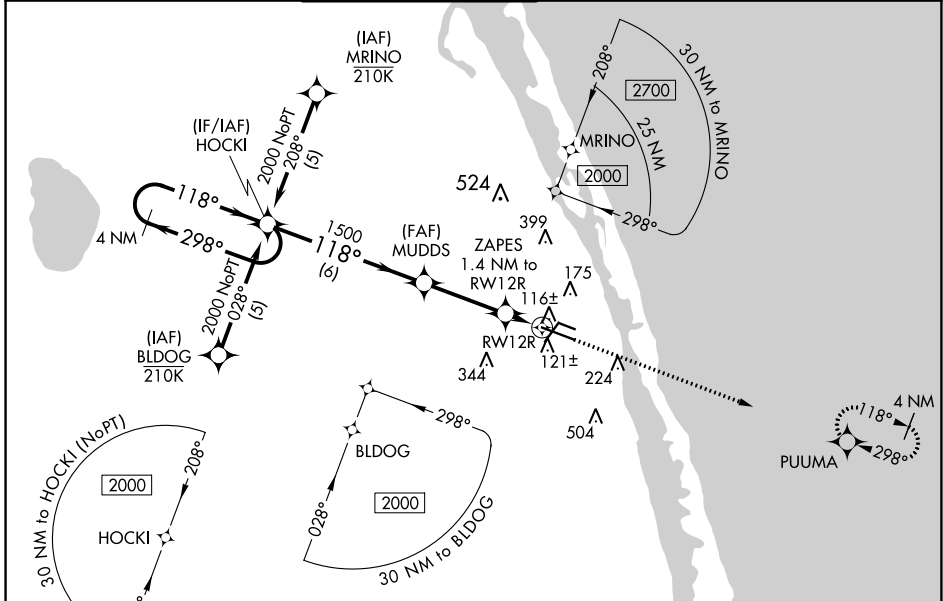
# RNAV (GPS) RWY 12R

VERO BEACH RGNL (VRB)

**⚠** Circling to Rwy 30R NA at night. Baro-VNAV NA when using Fort Pierce altimeter setting. For uncompensated Baro-VNAV systems, LNAV/VNAV NA below 0°C (32°F) or above 54°C (130°F), DME/DME RNP-0.3 NA. When local altimeter setting not received, use Fort Pierce altimeter setting and increase all DA 23 feet and all MDA 40 feet and increase LNAV Cats C and D visibility 1/8 mile and Circling Cat D visibility 1/4 mile.

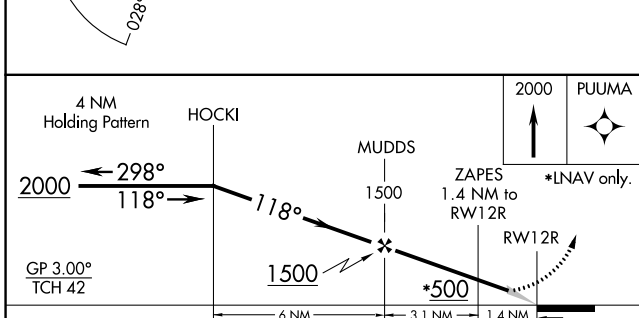
**MISSED APPROACH:**  
Climb to 2000 direct PUUMA and hold.

ATIS <b>120.575</b>	PALM BEACH APP CON <b>123.625 225.4 (N)</b>	VERO BEACH TOWER * <b>126.3 (CTAF) 0</b>	GND CON <b>127.45</b>	CLNC DEL <b>134.975</b>	UNICOM <b>122.95</b>
------------------------	--	---	--------------------------	----------------------------	-------------------------

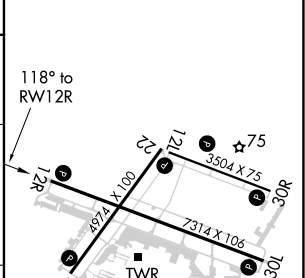


SE-3, 09 SEP 2021 to 07 OCT 2021

SE-3, 09 SEP 2021 to 07 OCT 2021



ELEV 24	<b>D</b>	TDZE 23
---------	----------	---------



CATEGORY	A	B	C	D
LPV DA		279-3/4	256 (300-3/4)	
LNAV/VNAV DA		294-7/8	271 (300-7/8)	
LNAV MDA		380-1	357 (400-1)	
CIRCLING	560-1	536 (600-1)	560-1 1/2 536 (600-1 1/2)	660-2 636 (700-2)

MIRL Rwy 4-22, 12R-30L, and 12L-30R  
REIL Rwy 4, 12R, 22 and 30L