

VORTAC TRV <b>117.3</b> Chan 120	APP CRS <b>298°</b>	Rwy ldg <b>7276</b> TDZE <b>22</b> Apt Elev <b>24</b>
--	------------------------	---

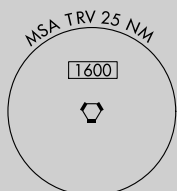
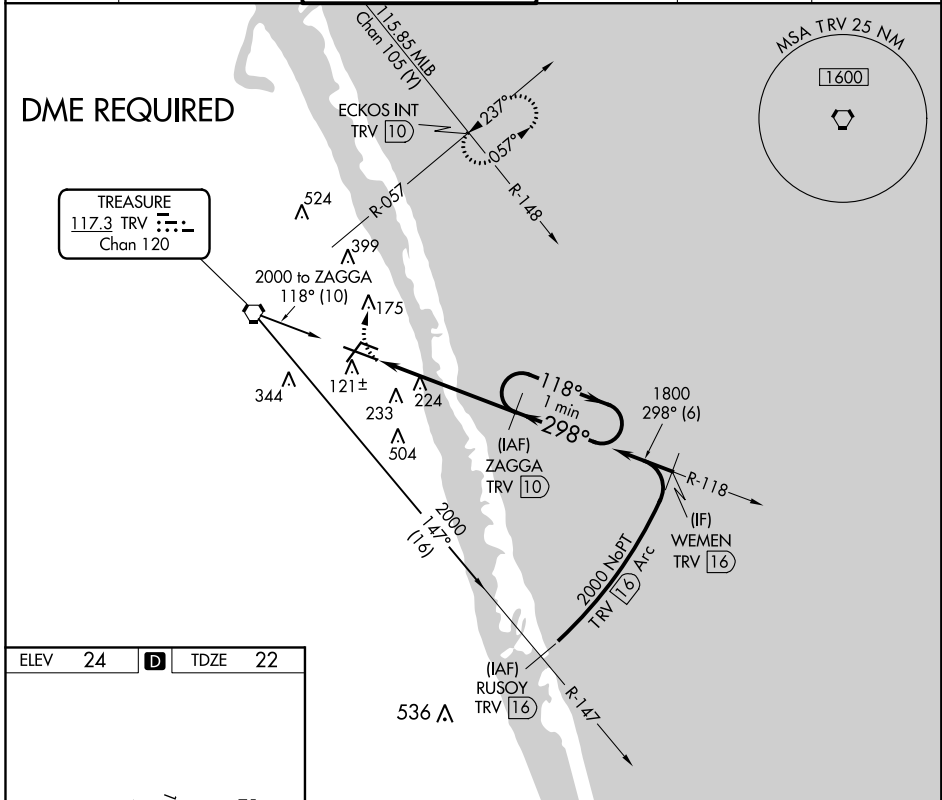
# VOR RWY 30L

VERO BEACH RGNL (VRB)

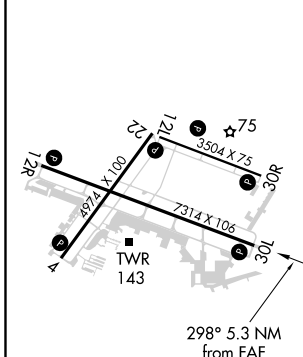
**⚠** Circling to Rwy 30R NA at night. When local altimeter setting not received, use Fort Pierce altimeter setting and increase all MDAs 40 feet. VDP NA with Fort Pierce altimeter setting. DME required.

**⚠** MISSED APPROACH: Climbing right turn to 2000 on heading 360° and TRV VORTAC R-057 to ECKOS INT/TRV 10 DME and hold.

ATIS <b>120.575</b>	PALM BEACH APP CON <b>123.625 225.4 (N)</b>	VERO BEACH TOWER ★ <b>126.3 (CTAF) 0</b>	GND CON <b>127.45</b>	CLNC DEL <b>134.975</b>	UNICOM <b>122.95</b>
------------------------	--	---	--------------------------	----------------------------	-------------------------



ELEV 24	<b>D</b>	TDZE 22
---------	----------	---------



MIRL Rwy 4-22, 12R-30L, and 12L-30R  
REIL Rwy 4, 12R, 22 and 30L

2000	TRV R-057	ECKOS INT	ZAGGA TRV 10	One Minute Holding Pattern
hdg 360°				
TRV 4.7	TRV 6		118° → 1800	
			← 298°	
			≤ 3.05° TCH 58	
	-1.3 NM	4 NM		
CATEGORY	A	B	C	D
S-30L	500-1	478 (500-1)	500-1½	478 (500-1½)
CIRCLING	560-1	536 (600-1)	560-1½	660-2 536 (600-1½)
				636 (700-2)

SE-3, 09 SEP 2021 to 07 OCT 2021

SE-3, 09 SEP 2021 to 07 OCT 2021